

306. Ein Vorschlag zur Hebung unserer Inneren Mission
 307. General Director of Missions
 308. 309. General Director of Home Missions
 310. Chairman of Board of Home Missions to be salaried officer
- IV. Konstitutionelle Angelegenheiten:
 401. Stehendes Komitee für konstitutionelle Sachen
 402. Stellung der Distriktspräsidenten in intersynodalen Streitigkeiten
 403. Änderung von § 3 des Wahlregulativs
 404. Änderung in den Nebengesetzen der Synodalkonstitution
 405. Combining two or more boards whenever feasible
 406. Was soll hinfort unsere Praxis sein bei Entlassung an den Englischen Distrikt?
 407. Amalgamation of English District congregations with other Districts of Synod
 408. Final definition of Synod's policy in matters forestalling free action of Synod
 409. English language the official language of Synod
 410. Incorporation der Synode in Canada
 411. Bitte um Definierung der Rechte der beratenden Pastoren
 412. Eingaben des Canada-Distrikts
 413. Teilung des Kansas-Distrikts
- V. Synodalverlag. Literatur:
 501. Bericht des Direktoriums des Concordia Publishing House
 502. Report of the Literary Board
 503. Bericht der Kommission für Kinder- und Jugendliteratur
 504. Bericht der Kommission für Jugendarbeit
 505. Herausgabe einer History of the United States
 506. Herausgabe einer deutschen Grammatik
 507. Herausgabe einer englischen Geschichte der lutherischen Kirche Amerikas
 508. Herausgabe einer englischen Bibel
 509. Verschmelzung und Verbesserung unserer Zeitschriften
 510. Amalgamation of *Lutheran Witness*, *Walther League Messenger*, and *Concordia Junior Messenger*
 511. Vergrößerung des „Lutheraner“ und des *Lutheran Witness*
 512. Vorausbezahlung der Zeitschriften
 513. Änderung der Abonnementsbedingungen für unsere Zeitschriften
 514. Christian literature in raised type for the blind
- VI. Finanzsachen:
 601. Triennial report of Treasurer of Synod for the years 1920—1922
 602. Auditors' report
 Diagram to show auditing of accounts
 603. Report of legacy officer
 603a. Supplementary report
 604. Bericht des American Lutheran Board for Relief in Europe
 605. Bericht der Versorgungsbehörde. — Eingaben der Versorgungskonferenz
 606. Die Allgemeine Kirchbaukasse
 607. Neues Regulativ für die Allgemeine Unterstützungskommission
 608. Extrakollekten und Vorschläge für die Kirchbaukasse in das Budget einzuschließen
 609. Bessere Regulierung der Finanzen
 610. Einführung und Gebrauch des Budgetsystems für die ganze Synode
 611. Duplikat der vorigen Eingabe
 612. Abänderung und Verbesserung des Finanzsystems unserer Synode
 613. Building program. — Committee of information on Synod's needs
 614. One of Synod's Vice-Presidents to be director of finances
 615. Salaried executive secretary of General Church Extension Board
 616. Contingent Reserve Fund
 617. Disposition of Concordia Publishing House dividends
- VII. Besondere Berichte, Bitten und Vorschläge:
 701. Bericht des Board of Directors der Synode
 702. Bericht und Bitten unserer Brüder der deutschen Freikirche
 703. Investigation of Pastor J. Kunstmann's complaint
 704. Nicht zu viele neue Ämter!

PROCEEDINGS

of the

Thirty-Second Regular Meeting

of the

Ev. Luth. Synod of Missouri, Ohio,
and Other States,

Assembled at

FORT WAYNE, INDIANA,

June 20—29, 1923.



St. Louis, Mo.
CONCORDIA PUBLISHING HOUSE.
1923.

PROCEEDINGS

of the

Thirty-Second Regular Meeting

of the

Ev. Luth. Synod of Missouri, Ohio, and Other States,

Assembled at

Fort Wayne, Ind., June 20 to 29, 1923.

I. N. J.

The delegates of the Thirty-second Convention of the Evangelical Lutheran Synod of Missouri, Ohio, and Other States assembled at Fort Wayne, Ind., on June 20. The opening services were conducted in St. Paul's Church at 10 A. M. The Third Vice-President, Rev. G. Bernthal, delivered the convention sermon from Eph. 4, 6.

Sessions.

Fifteen business sessions were held in the chapel of Concordia College, from Wednesday afternoon, June 20, to Friday noon, June 29. Hours for sessions were: 9 to 12 in the morning and 1.30 to 4 in the afternoon. Most afternoon sessions of the second week lasted to 4.30 P. M. Each session was opened with a brief devotional exercise by the chaplain, Rev. P. Eickstaedt, of Laporte, Ind. The devotional exercise on the morning of June 26 was given the form of a memorial service for the brethren who had departed this life during the past three years.

The First Session.

The first session began at 2 P. M. with a short devotional exercise by Rev. Wm. Moll. For a list of members the delegates were referred to the booklet gotten out by Concordia Publishing House and presented to each delegate. Registration for the delegates had been in progress since the morning, and the secretary reported that up to the time of opening 239 voting pastors, 230 lay delegates, 26 advisory pastors, 68 teachers, and 138 officials and especially accredited members of Synod had registered, while 38 voting pastors, 47 lay delegates, 10 advisory pastors, and 13 teachers had not yet registered. President Pfotenhauer hereupon declared the Synod opened and read his address and report.

The President's Address.

(German Report, p. 4.)

In a democracy one usually finds political parties representing different tendencies and antagonizing each other. Such parties often benefit the state. They foster civic virtue and interest in the public welfare; they check, in a measure, waste and bribery and keep rascality within bounds.

As the State may be benefited by parties, so, it is often said, the Church likewise might profit by having within its pale various tendencies sponsored by a liberal, a conservative, and a middle party, since they stimulate church life and keep it from a state of torpidity.

What shall we think of this? Church and State are two entirely distinct realms, differing from each other as much as heaven does from earth, as time does from eternity. Common sense, therefore, rejects as folly any attempt at making conclusions from the State to the Church. The Scriptures, however, are very explicit on the question of parties within the Church of God. 1 Cor. 1, 10 we read: "Now I beseech you, brethren, by the name of our Lord Jesus Christ that ye all speak the same thing, and that there be no divisions among you, but that ye be perfectly joined together in the same mind and in the same judgment." These words earnestly admonish all Christians to beware of party spirit. Rom. 16, 17 the apostle writes: "Now I beseech you, brethren, mark them which cause divisions and offenses contrary to the doctrine which ye have learned, and avoid them. Here Paul condemns most severely all those who cause schisms in the Church by teaching false doctrines. John 17, 21 we hear our Savior, in His high-priestly prayer beseeching His heavenly Father in touching words to grant unity to the Church, saying: "That they may all be one, as Thou, Father, art in Me and I in Thee, that they also may be one in Us, that the world may believe that Thou hast sent Me."

These statements clearly show that God is not willing to tolerate parties in the Church, but requires all Christians to think, speak, and act in unity. No matter where it appears in the Church, party spirit is a sign of serious danger. If it is not overcome, it will without fail ruin the Church. Invariably church parties are a fatal poison. They are incompatible with the real character of the Church since solely the will of God, as it is definitely expressed in the Bible, is to have authority in the Church.

Our Confessions, therefore, declare: "We believe, teach, and confess that the sole rule and standard according to which all dogmas together with [all] teachers should be estimated and judged are the prophetic and apostolic Scriptures of the Old and of the New Testament alone, as it is written Ps. 119, 105: 'Thy Word is a lamp unto my feet and a light unto my path,' and St. Paul: 'Though an angel from heaven preach any other gospel unto you, let him be accursed,' Gal. 1, 8." (*Concordia Triglotta*, 777.)

Hence, if a church-body wishes to be preserved from party spirit or be cured of this malady when it has broken out, the only remedy is diligent study of God's Word. The Word of God has the property of unifying and preserving in unity. Those who say that doctrines should not be discussed in order to avoid divisions within the Church know not whereof they speak. Luther writes in the *Smalcald*

Trigl.: "Therefore the Church can never be better governed and preserved than if we all live under one head, Christ, and all the bishops, equal in office (although they be unequal in gifts), be diligently joined in unity of doctrine, faith, Sacraments, prayer, and works of love." (*Trigl.*, 473.)

Our Synod has so far been preserved from party spirit. Although its members are scattered over distant lands and differ much as to conditions and manner of living and external interests, still there are no different tendencies, no divisions, among us despite our many frailties and weaknesses. It would be unheard of within our Synod to speak of a liberal party in opposition to a conservative party. We are all joined together in the same mind and in the same judgment. One and the same spirit prevails in all our District conventions and in all our educational institutions. That such is the case we owe not to ourselves, but to the Word of God, which was diligently preached and studied in our midst ever since the organization of our Synod and is still preached and studied in our churches and schools, at our conferences and synodical meetings. In our midst the Word of God has revealed its power to create and preserve unity. On the one hand, in divine matters, it permitted no other voice than that of Jesus to gain authority among us; on the other hand, it prevented the adaphora from becoming so prominent as to estrange and to divide us inwardly, so that they were decided, often after a spirited debate, either by the minority's submitting to the majority or by the majority's yielding to the minority when that was demanded by charity.

May the faithful God restrain and ward off from us all doctrinal indifference which seeks to insinuate itself into our midst, so that we may confess with the fathers of our Synod: "Thy testimonies are my counselors." Then we shall continue peacefully in *one* mind in spite of the fury of the devil, the world, and our flesh; we shall prove ourselves a salt in this unionistic age and be able to do the great work of the Church in a God-pleasing manner. To this end may the Lord bless our present convention!

Let our prayer be the closing sigh of the authors of the *Formula of Concord*: "May Almighty God and the Father of our Lord Jesus grant the grace of His Holy Ghost that we all may be one in Him and constantly abide in this Christian unity, which is well-pleasing to Him! Amen." (*Trigl.* 837.)

The President's Report.

Since the *Book of Memorials*, which is in the hands of each delegate, gives full information regarding the synodical events of the past three years as well as respecting the business before the present convention, I shall be brief. Suffice it to remark the following.

During the past three years it was again necessary to contend earnestly with the bitter enemies of our parochial schools, who endeavored, especially by legislative measures, to destroy them root and branch. But the Lord most evidently espoused our cause, granting us victory after victory, especially during the past weeks, and in many places He granted us relief from the oppression of our enemies. Praise and glory be to His holy name! Let us henceforth all the more zealously foster and cherish our schools, the excellent nurseries of our Synod. — Our educational institutions and our missions prospered in a measure exceeding our fondest hopes. Never in the history of our Synod was the attendance at our colleges and seminaries so large. In the mission-fields wide-open gates were set before us. Our missions in India are again in good normal condition. Work has been begun in Old Mexico. In Europe, especially in Germany, God has set before us an open door. It is a pity that contributions did not keep pace with the growing needs, so that our finances are not in an especially good shape.

The creation, by Synod, of a Board of Directors has proved a wise measure, as it relieves the President of much responsibility and work. Better attention can now be given to Synod's constantly growing business. The Board suffered a severe loss in the death of Mr. Benjamin Bosse, a very talented man who served Synod with great circumspection and with sacrificing love. His place was filled by Mr. J. W. Boehne, of Evansville, Ind. The Board's activities will be reported on at various times during these days.

Our relations with the other Synods of the Synodical Conference continued undisturbed. A report on the work of the Intersynodical Committee will be presented. Rev. Th. Nickel, D. D., of Australia, and Pastors Paetiaelae and Wegelius, of Finland, are in our midst as guests. A committee will also make a most gratifying report on conferences had with the Finnish National Church of America.

All educational institutions and District conventions were regularly visited. Three new Districts were organized. I was also present at many committee meetings and attended to the constantly growing correspondence. The vice-presidents faithfully assisted me, bestowing much time and labor on Synod's business.

And now, fathers and brethren, let us proceed with our business. The Holy Spirit graciously fill us with the true spirit of Pentecost and grant that our words and resolutions may serve to build the Church of Christ and honor our most glorious Savior! Amen.

Assistant Secretary.

The appointment of Prof. Paul F. Bente as Assistant Secretary was ratified. At the beginning of each session he read an English summary of the proceedings of the previous session. He also prepared this English Report for publication.

Nomination Committee for Committee on Appeals.

No committee on appeals having been appointed by the President, the following were elected from the floor to nominate candidates for committees on appeals: Rev. H. Schroeder (Eastern), Rev. Paul Dannenfeldt (Central), Vice-President G. Bernthal (Cal.-Nev.). They presented a double row of candidates for each committee on appeals which resulted in the election of the following candidates. Committee 18 A (appeals of Pastor Kunstmann of South America and Rev. H. Reinitz, Hoosier, Sask., Can.): Revs. Paul Schulz, Springfield, Ill.; Prof. Th. Engelder, Springfield, Ill.; Rev. P. Eickstaedt, Laporte, Ind.; Teacher John A. Klein, Detroit, Mich.; Mr. E. O. Lothman, of Kentucky. Committee 18 B (appeals of Mr. H. W. Ohlde, Snohomish, Wash.; Mrs. Lampe, St. Louis, Mo.; Mr. and Mrs. H. F. Pieper, Edwardsville, Ill.; Mr. and Mrs. Whipple, St. Paul, Minn.; Pastor Fuhrmann): Prof. Theo. Buenger, St. Paul, Minn.; Rev. J. Huchthausen, Minneapolis, Minn.; Rev. George Meyer, Seymour, Ind.; Teacher T. H. Breihahn, St. Joseph, Mich.; Mr. Edward Hagist, of California.

Nomination Committee on Elections.

The Judge of Elections, Rev. J. T. Destinon, of Pomeroy, Iowa, also arranged for an election of a Nominating Committee on Elections, which resulted in the following elections: Pastors L. J. Schwartz, H. Hohenstein, A. L. Oetjen; lay delegates J. Piepkorn, H. Ahlbrand, H. Merkel; Teachers L. Becker, J. Weiss, Theo. Wilder.

The Press.

Announcement was made that daily reports of the sessions could be found in the *Fort Wayne Journal Gazette* and *News Sentinel*. A daily German report was published by the *Fort Wayne Freie Presse-Staatszeitung*. The editors of the *Lutheraner* and the *Lutheran Witness* were also requested to publish a summary report of the convention in the next issues.

Committees.

The reports, memorials, and petitions to Synod were referred to special committees as published in the official organs. These committees considered them and made recommendations to Synod. During the first session necessary changes in these committees were announced. At the close of the session the committees met to arrange for time and place of meeting. At this time all unprinted memorials were also given to the respective committees. Some committees had met prior to the opening of Synod and had portions of their reports completed in time for the first session. A complete roster of committees and of memorials assigned them is given on pages 24—26 of the German Report.

Tabular Summary of Attendance. (For complete list see German Report, pp. 7-23.)

SYNODICAL DISTRICTS.	DELEGATES PRESENT.			DELEGATES ABSENT.			SPECIALLY ACCREDITED.*
	Voting.	Advisory.	Totals.	Voting.	Advisory.	Totals.	
	Pastors.	Professors.	Members of Syn. Bds.	Pastors.	Teachers.	Totals.	
1. Alberta and British Columbia.	2	1	4	1	2	3	2
2. Atlantic.	11	1	22	1	1	2	3
3. Brazil.	1	1	2	1	1	2	1
4. California and Nevada.	4	1	5	1	1	2	1
5. Canada (Ontario).	3	1	4	1	1	2	1
6. Colorado.	2	1	3	1	1	2	1
7. English.	15	4	19	2	3	5	1
8. Iowa.	12	2	14	1	1	2	1
9. Kansas.	14	2	16	1	1	2	1
10. Manitoba and Saskatchewan.	4	2	6	1	1	2	1
11. Michigan.	16	2	18	1	1	2	1
12. Minnesota.	18	2	20	1	1	2	1
13. Central.	24	3	27	1	1	2	1
14. Northern Illinois.	19	3	22	1	1	2	1
15. Northern Nebraska.	8	3	11	1	1	2	1
16. North Wisconsin.	9	3	12	1	1	2	1
17. North Dakota and Montana.	6	3	9	1	1	2	1
18. Eastern.	15	3	18	1	1	2	1
19. Oregon and Washington.	2	1	3	1	1	2	1
20. South Dakota.	4	1	5	1	1	2	1
21. Southern Illinois.	8	1	9	1	1	2	1
22. Southern Nebraska.	2	1	3	1	1	2	1
23. Southern Wisconsin.	10	2	12	1	1	2	1
24. South Texas.	9	2	11	1	1	2	1
25. Texas.	6	2	8	1	1	2	1
26. Western.	21	3	24	1	1	2	1
27. Central Illinois.	11	2	13	1	1	2	1

Excuses.

(German Report, p. 22.)

1. Excused for absence during the entire time of sessions: Pastors F. A. Schwertfeger, H. H. Feiertag, O. A. Graebner; Teacher Theo. Koelling; lay delegates W. P. Jahnke, John Michel.

2. Excused for late arrival or early departure: Profs. G. Chr. Barth, G. Romoser; Pastors C. Rittmann, E. V. Haserodt, H. Wittrock, H. Roehrs, Wm. F. Junke, Ad. Behnke, W. H. Koss, F. O. Scholz, Frank Luley, H. Schimmelfennig, M. C. Rumsch, Carl R. Trautmann, John P. Barkow, Phil. H. Bohn.

3. Excused for temporary absence: Teachers Aug. W. Hoffmann, Rich. Erdmann, L. Lueker, H. C. Landeck, J. F. Reuter, W. Boese-necker, B. J. Seitz, John A. Klein, A. Paar, E. J. Studt, J. E. Wagner; lay delegates Rich. Rutz, John Luebben, Herm. Steindorff, H. F. Mertens, L. Haubein, Gust. Moldenhauer, Alb. Montie, Wm. Pfeiffer, Fr. H. Meyer.

4. Not registered and not excused: Pastors Th. Walther, G. Steffen, P. J. Becker, H. Baumann (advisory); Teacher F. Malin; lay delegates J. Glick, Chr. Fischer, Chr. Dittmann, P. Dilk, Mr. Keller.

New Members.

A. *Congregations*: Zion Ev. Luth. Congregation, Garrett, Ind.; Zion Ev. Luth. Congregation, Latimer, Kans.; Zion Ev. Luth. Congregation, Gardena, N. Dak.; Grace English Ev. Luth. Church, Jamaica, L. I., N. Y.

B. Pastors and Teachers:

ALBERTA AND BRITISH COLUMBIA DISTRICT. — *Pastors*: John Herrmann, Red Deer, Alta.; Karl F. Wenzel, Duchess, Alta.; Walter W. Eifert, Trochu, Alta.; Theo. H. G. Waack, Calmar, Alta.; John H. Meichsner, Hilda, Alta.; Cand. Martin Cohrs, Lethbridge, Alta.

ATLANTIC DISTRICT. — *Pastors*: F. van Steen, Plainfield, N. J.; H. W. Reinke, New London, Conn.; W. Heintze, Willimantic, Conn.; C. G. K. Wollslager, Gloversville, N. Y.; A. Meyer, Yonkers, N. Y. — *Teachers*: A. H. Pittelkow, Paterson, N. J., G. Hoffmann, New York, N. Y.; M. A. Greunke, New Haven, Conn.; G. F. Wichmann, Pine Island, N. Y.

CALIFORNIA AND NEVADA DISTRICT. — *Pastor*: Frank A. Haedicke, Lovelock, Nev.

COLORADO DISTRICT. — *Pastors*: Arthur H. Schmid, Berthoud, Colo.; Arnold Lankow, Denver, Colo.; August H. Schmidt, Utah; E. Weber, Stratton, Colo.; Cand. H. G. Hartner, Stoneham, Colo.

IOWA DISTRICT. — *Pastors*: Hans Naether (withdrew from the Iowa Synod, colloquized May 14, 1923, by the Springfield Board of Examiners), Iowa City, Iowa; W. Friedrich, Audubon, Iowa.

KANSAS DISTRICT. — *Pastors*: Geo. Weber, Dodge City, Kans.; Dan. C. Hennig, Grandfield, Okla.; K. E. Juengel, Stuttgart, Kans.; Otto H. Mueller, St. Francis, Kans.; Carl A. Lobitz, Yates Center, Kans.; Carl Tiemann, Winona, Kans.; M. Kiehl, Marysville, Kans.

MANITOBA AND SASKATCHEWAN DISTRICT. — *Pastors*: W. Busse, Luella, Sask.; W. Leininger, Oxbow, Sask.; A. Poolex, Plumas, Man.; F. Miller, Roblin, Man.; P. Zitzmann, Prince Albert, Sask.

MICHIGAN DISTRICT. — *Pastors*: Ad. Smukal, E. J. Scheibert, W. O. Kleinhans. — *Teachers*: E. J. Faulstich, W. Fiehler, H. Glawe, M. C. Pieper, G. F. Reimann, A. Scheiwe, A. G. Sommerfeldt, J. F. Stach, Carl Wittkopp, Carl A. C. Wolter.

MINNESOTA DISTRICT. — *Pastors*: E. Baker (Deaf-mute Missions); A. H. Ziegler (Foreign Missions); A. Stoskopf, Pequot, Minn.; L. G. Weber, Danvers, Minn.; W. Clausen, Zerkel, Minn.; M. Heine, Tenstrike, Minn.; Cand. O. Volz. — *Teacher*: A. E. Borchardt, Fairfield, Minn.

CENTRAL DISTRICT. — *Pastors*: Erwin H. Meinzen (Foreign Missions); W. Aker (colloquized by the Springfield Board of Examiners), Waymansville, Ind.; Walter A. Pohl, Parkersburg, W. Va.; Gilbert Otte and Wilfred Kruse, assistant professors at Concordia College, Fort Wayne, Ind. — *Teachers*: Wilfred Rozner, Brownstown, Ind.; Clarence C. Seidler, Silvertown, O.; J. Helmkamp, Tipton, Ind.; W. Siems, Evansville, Ind.

NORTH DAKOTA AND MONTANA DISTRICT. — *Pastors*: A. Bachanz, Oakwood, N. Dak.; B. Holm, Underwood, N. Dak.; J. V. Richert, Groff, N. Dak.; J. Potratz, Bozeman, Mont.; W. E. Wolter, Hamilton, Mont. — *Teacher*: W. F. Ruehle, Hankinson, N. Dak.

NORTHERN NEBRASKA DISTRICT. — *Pastor*: W. Weber, West Creek, Nebr.

NORTH WISCONSIN DISTRICT. — *Pastors*: Martin Zimmermann, Lily, Wis.; G. A. Zimmer, Schofield, Wis.; Herm. Schedler, Junction City, Wis.; Harry Behning, Deer Park, Wis.

OREGON AND WASHINGTON DISTRICT. — *Pastors*: A. Grabow, Vancouver, Wash.; J. Kempff, Squirrel, Idaho; Paul H. Born, Wapato, Wash.; Cand. C. G. Frice (Deaf-mute Missions), Spokane, Wash. — *Teacher*: C. F. Wunderlich, Seattle, Wash.

SOUTH DAKOTA DISTRICT. — *Pastor*: Otto Pinnt, Wewela, S. Dak.

SOUTHERN ILLINOIS DISTRICT. — *Pastors*: R. Bernahl, Cand. Carl Rutz.

SOUTH WISCONSIN DISTRICT. — *Pastor*: Cand. Paul Zanow, assistant professor at Concordia College, Milwaukee, Wis. — *Teacher*: H. C. Rommelmann, Sheboygan, Wis.

SOUTHERN DISTRICT. — *Pastors*: Carl Kummer, Gotha, Fla.; Cand. Walter Lotz, Jennings, La.; Cand. H. A. Bielenberg, Abita

Springs, La.; Cand. H. E. Wallner, Isle of Pines, Cuba; Cand. K. Hofmann, Albany, Ala.

TEXAS DISTRICT. — *Pastor*: W. Seidel, Rhea, Tex.

WESTERN DISTRICT. — *Pastors*: Arnold H. L. Gebhardt, Foreign Missions; Cand. L. W. Wickham, St. Louis, Mo.; Cand. J. G. Elser, Liberty Tp., Mo.; Cand. W. Keisker, Flat River, Mo.; Cand. Frank J. Zirbel, Waldenburg, Ark.

EDUCATIONAL INSTITUTIONS.

I. General Resolutions.

(German Report, p. 28 f.).

Course of Study.

The Survey Committee reported that the preparation of a plan of instruction for our higher educational institutions given into the hands of representatives of various colleges, the St. Louis Seminary, and the Survey Committee by the convention of 1920 could not be fully carried out. This committee was continued until this work will have been completed.

Board of Education and Educational Secretary.

The proposal to create a Board of Education with a paid Educational Secretary to supervise the work of the higher educational institutions was *rejected*.

Conference of President of Synod and Directors of Educational Institutions.

Synod resolved that the Directors of the various colleges and seminaries shall meet with the President of Synod immediately preceding the professors' conference to consult about governing the institutions and executing Synod's resolutions.

Ladies' Seminary.

Synod declined to erect a Ladies' Seminary. Instead, the Districts were urged to provide Lutheran Centers and chapels in the immediate vicinity of a number of colleges and universities.

Higher Education of Our Young People.

1. Recognizing the grave dangers to Christian consciousness which the trend of our time is bringing with it, Synod declared itself of the opinion that our young people ought at least to attend a Lutheran elementary, or parochial, school.

2. Synod acknowledged that the welfare of the Church would be

promoted if higher institutions of learning and general culture were erected within our Synod. Hence it was resolved—

a) That wherever possible, parish-schools extend their courses so that congregations cooperate to achieve this goal if it is impossible for individual congregations; that the course be divided into grades 1—3, 4—6, 7—9 (Junior High School). Where this is impossible congregations should provide a well-regulated Bible class for the young people attending high schools.

b) Since general conditions and school conditions differ in the various Districts, the entire question of higher education was referred to the Districts with the recommendation to provide for coeducational high schools and, if possible, for colleges, as far as circumstances permit. Each District was also called upon to provide for such of our young people as are attending a State university within its confines.

Beginning, Duration, and Close of Scholastic Year.

Synod endorsed the following resolutions of the Professors' Conference:—

The scholastic year of all synodical institutions is to begin in September and to close in June.

Details as well as short vacations and free days are to be decided by the individual faculties and boards. Each institution must teach a definite number of really full school-days. Opening and closing days of a semester and of the school-year, on which no lessons are given, are not counted as school-days. Nor shall more than five days be counted a week.

The minimum number of days shall be as follows: St. Louis, 165; Springfield, 175; normal schools and colleges, 180.

Diminishing the Number of Institutions.

The Pittsburgh District Pastoral Conference memorialized Synod with respect to reducing the number of institutions.

On recommendation of the committee in charge this was restricted to Conover, N. C., since the cost per student was highest at that institution. The entire question was referred to the Board of Directors for investigation and report at the next convention.

Increased Tuition-Fees.

Tuition for students at our colleges who do not intend to enter the service of the Church was fixed at \$100, payable in quarterly instalments.

Gymnasiums.

A memorial called Synod's attention to the fact that gymnasiums are a necessary adjunct to our institutions. Synod was petitioned to recede from its old position according to which it built no gymnasiums. Synod adopted the principles set forth in the memorial.

Changes in the Regulations of Boards of Control.

a) Paragraph 13 of the "Regulations for the Committee on Buildings" was changed so as no longer to limit the Committee to \$1000 for repairs at seminaries and colleges and to \$500 at high schools (*Progymnasien*).

In § 15 of the "Regulations of Local Boards of Control" a sentence was inserted ordering the local boards in all cases to adhere strictly to the appropriations of the Board of Directors and to the resolutions of Synod.

b) In all synodical building operations competition as customary among business men is to be employed.

All repairs made at one time, especially during the summer vacation, are to be considered one item and are covered by § 13 a of the "Regulations of the Committee on Buildings."

Senior College.

The question of arranging for a Senior College at St. Louis, which would be permitted to use old Seminary buildings, was *tabled*.

Latin Course at Teachers' College.

The memorial requesting Synod to add a two-year Latin course in the Teachers' Colleges was *declined*.

II. Resolutions Affecting Individual Institutions.

Concordia Seminary, St. Louis, Mo.

(Report of the Board, Condensed. Germ. Rep., p. 37.)

The Board of Control reported that Dr. C. C. Schmidt, who served Synod as a member of the St. Louis Board of Control for thirty-three years, was compelled to resign owing to advanced age. Because of his wide experience he was asked to continue assisting the Board with his counsel as an honorary member.

The enrolment was as follows:—

Year.	Enrolled.	Attending.	Absent.	Vicariating.
1920—1921:	368	275	93	78
1921—1922:	361	292	69	63
1922—1923:	353	290	63	58

In general, good health prevailed, although four deaths occurred in the student-body, while Prof. E. Pardieck became totally incapacitated in November, 1920.

The resolutions of the Detroit convention, 1920, were carried out as far as possible. The elective fourth year was added. Six students took the course during the past school-year. They were housed in Prof. Pardieck's former residence, which is now known as the Annex.

The students show enthusiasm for this work, and a larger number have signified their intention of taking the course in the coming year. Complete division of classes has been carried out in exegesis and partial division in dogmatics and homiletics. In catechetics it has not yet been possible. The correspondence course has not been inaugurated since the present faculty was not equal to the additional work. To carry on this work would require a professor who could devote his entire time to it.

The faculty has been increased by four members. In December, 1920, Professors Sommer, J. T. Mueller, and Fritz were inducted into office; in 1921, Prof. W. Arndt. In 1922 Prof. W. A. Maier took the position vacated by the illness of Prof. Pärdieck. Professor Fritz entered upon his duties as Dean in December, 1920, and has, under God's blessing, successfully filled this difficult post. At the request of the Board of Home Missions in Foreign Countries, Professor Dau was given leave of absence to make an extended tour of Europe for our Church.

Lecture courses have been instituted. Students are required to do private reading and are given syllabi for various courses. Working during spare time has been restricted and regulated. The number of English courses has been materially increased.

Several legacies were received by the Seminary and for the Indigent Students' Fund.

ACTION.

Synod granted an additional professor to take charge especially of the correspondence courses and ordered the membership of the previous Board increased by two pastors and two laymen. The previous purchase of a professor's residence was ratified.

The New Seminary.

(Report of Concordia Seminary Building Committee.)

I. Purchase of Tract of 71 Acres Adjoining the City of St. Louis.

The following resolutions were adopted by Synod, June 18, 1920, at Detroit regarding the removal of Concordia Seminary from its present location:—

Resolved, That the crowded condition of our classical Seminary be relieved.

Resolved, That we erect new buildings for our classical Seminary in a suitable new location.

Resolved, That in addition to the cost of the site the sum of \$1,000,000 be appropriated for the relocation of the institution.

Resolved, That the Seminary remain in St. Louis.

On May 16, 1921, the Board of Control of Concordia Seminary received official instructions from the Board of Directors to purchase

a tract of land consisting of seventy-one acres and located west of St. Louis, in St. Louis County, for a site for Concordia Seminary. The price agreed upon in the contract of sale was \$2,600 per acre. The purchase was decided after the Board of Directors, the local Board, the faculty, the local conference, and lay representatives of our congregations had carefully investigated a great number of sites. The De Mun tract finally received the unanimous endorsement of the faculty, of the local Board, and of a meeting of pastors and laymembers, attended by two hundred or more, held at Emmaus Church Hall on May 10. Real estate men of the city of St. Louis consider the location one of the finest to be found anywhere for such a purpose as ours. It is topographically ideal, requiring very little or no grading. It is one of the highest pieces of ground near the city. From it a view is obtained over the green expanse of Forest Park, the great city stretching eastward, to the north the Washington University buildings,—our grounds being much higher than the grounds of the university,—and to the west great private parks, with fine residences scattered between. Adjoining property is now sold for \$5,000 to \$10,000 an acre.

II. The Building Committee is Organized.

Your Committee was organized October 18, 1921, as follows: Rev. R. Kretzschmar, chairman; Dr. C. C. Schmidt, Mr. A. G. Brauer, Mr. J. P. Hahn, Mr. H. F. Bente, Mr. A. W. Thias, Mr. L. Stockho, Mr. Samuel Kowert, Dean J. H. C. Fritz, Prof. L. Fuerbringer, and Prof. Theo. Graebner, secretary.

For the Board of Directors: Mr. Henry W. Horst, of Rock Island, Ill.

The following members have been added during the past year: Rev. Theo. Laetsch, Mr. Wm. F. Wischmeyer, Mr. Chas. Wehking, and Mr. Ewald Schuettner, of St. Louis; Rev. W. Koepchen, of New York; Mr. E. Rubbert, of Minneapolis; Mr. F. J. Schinnerer, of Long Beach, Cal.; Mr. G. Mertz, of Mobile, Ala.; and Mr. F. G. Walker, of Cleveland, O.

III. Requirements for an Enrolment of 400 Students.

The program of the Building Committee as finally adopted reads as follows:—

1. *Administration Building*. To contain administration offices, reception-room, faculty-room, and living-rooms for students.

2. *Lecture Hall*. Classrooms of various sizes for 400 students; six for 75, two for 25, one for 150; libraries for professors, music-rooms, offices for student-body, and rooms for student organizations.

3. *Assembly Hall*. To seat 800, with gallery and stage. Organ.

4. *Library.* Stack-room; capacity, 50,000 volumes. Desk-room for 100 students. Periodical-room.
5. *Dormitories* for 400 students.
6. *Service Building.* Dining-halls for 400; kitchen, bakery, etc.; quarters for employees.
7. *Twelve Professors' Residences.*

IV. Selection of Architect.

The choice of architect for the new Seminary was the first task of the Committee. No less than fifty-four architects had made application with our Committee or had been recommended to it by members of Synod. By correspondence and, in many cases, by personal interview the Committee investigated the fitness of applicants and of such as had been recommended to the Committee by our members. This task occupied the Committee from October, 1921, until February, 1922. In February a subcommittee, consisting of Mr. A. G. Brauer, Mr. H. W. Horst, Rev. R. Kretzschmar, and Prof. Theo. Graebner, inspected the work of eleven architects who stood forth prominently as candidates for our work after our investigation had eliminated the rest. The Committee reported March 3, and on March 7 the firm of Day & Klauder, Philadelphia, was unanimously selected for our work. Contract was made with Mr. Chas. Z. Klauder for the firm on March 31.

V. Gradual Development of the Plans.

The program was gone over many times, and every effort was made to reduce the plans to the minimum necessary for 400 students. From the outset, however, the Committee was convinced that the following buildings would have to be constructed of such a size as to accommodate an ultimate enrolment of 800: Administration Building; Assembly Hall; Library; Service Building; Heating-Plant.

When the Committee had reduced its program to what it held to be an absolute minimum, a meeting was held May 25, 1922, with Mr. Klauder, and the details of the program were determined upon as stated above, 1-7. The cost of the first group of buildings (those necessary for 400 students, together with Assembly Hall, Library, Service Building, and Power Plant for 800) was roughly estimated by Mr. Klauder at a total of \$2,000,000. From the outset the architect was apprised of the fact that our appropriation was \$1,000,000, and that no contracts could at this time be entered into which would obligate Synod to a larger amount. The Committee was not convinced that the first estimate of Mr. Klauder was more than a rough guess and instructed the firm to develop a block plan which would involve less expense for exterior walls. A block plan in which this feature was embodied was submitted to the Building Committee July 20 and after considerable study was adopted. Slight changes in the arrangement of the buildings have since been made.

Through timely action of Mr. Brauer approaches to the Seminary tract from the north and south were secured.

A topographical survey was made showing 5 feet contour lines, also showing exact location of trees.

The main group being a connecting series of buildings arranged around courts, the Committee went to great pains, through repeated inspection of college groups built along these lines, in order to assure itself that there would be sufficient light and air. The smallest of our courts measures 90'×110', while the new Harkness Dormitories at Yale have courts 50'×60' and smaller.

The faculty and Building Committee established a standard of two students per room. The architect suggested a room-scheme which makes all studies serve at the same time as bedrooms, two students studying and sleeping in each room. This would represent a saving of 276 lineal feet of dormitory buildings over against the scheme suggested by the Committee. However, the Committee believed that our people generally would not approve of students living and sleeping in the same room and hence adopted a general scheme calling for suites of two rooms, one study- and one bedroom, to be occupied by two students. From its experience of many years the faculty stands convinced that at a graduate school like Concordia Seminary no more than two students should, as a rule, room together. This, in spite of the higher cost of building thereby entailed.

In regard to bills it was resolved that the secretary and chairman or a member delegated by the chairman sign the vouchers, and that the financial secretary of the Building Committee, Mr. A. W. Thias, attach original bills to vouchers for this purpose and report to the Committee at each session the amounts of bills paid and payable.

VI. Resolution Calling for Preliminary Plans in Order that Cost of Building Might be Established.

On September 8 the following resolutions were adopted and communicated to the architect:—

"Resolved, That it is the wish of the Committee to inform itself at this time of the approximate cost of necessary first group of buildings as projected." The firm was requested to make sufficient drawings in sketch form and to provide preliminary specifications and other preliminary information regarding one unit of a dormitory.

VII. Committee on Quarry Appointed.

At this time the attention of the Committee was drawn to certain stone quarries in Arkansas. A subcommittee, consisting of Mr. H. W. Horst and Mr. Wm. F. Wischmeyer, was appointed to look into the possibilities of this stone. A number of samples were obtained, and the Committee was encouraged to investigate these quarries by making personal inspection.

VIII. Meeting of Representative Men of Synod Advocates Synod-wide Campaign of Information.

In response to a call from President Pfotenhauer the Committee met jointly with the general synodical officers, District presidents, the Board of Directors, Lutheran Laymen's League officials, and laymen from various Districts at Holy Cross School, St. Louis, September 27.

The subject of the meeting was the inauguration of a Synod-wide campaign of information regarding the needs of our Building Fund and the adoption of a plan for a general collection to be raised during the present calendar year. The meeting unanimously resolved "to make a general effort to raise, during the present year, the money needed for our building program." The movement so happily begun resulted in participation, to some extent, of a majority of our congregations and has produced, so far as we are able to estimate its direct results, about \$400,000 for our treasury. The work for this collection was done by a Publicity Committee consisting of Professors Fuerbringer, Graebner, and Fritz.

IX. The Cost of a Dormitory Established. Further Plans and Specifications Called For.

In November, 1922, the preliminary plans and specifications for one typical dormitory unit were received and were placed in the hands of two general contractors to submit a tentative estimate of cost. As it seemed at this time that, due to a rising cost of construction and labor, the cost of our group would materially exceed the appropriation, the Committee arrived at the understanding that in case Synod cannot build for the appropriated amount, it will depend upon our ability to obtain donations in large amounts whether we shall be able to proceed to let contracts. However, since the exact knowledge of cost would be a necessary preliminary step, and since Synod can justly demand that the plans for the new Seminary be at least developed to this point when a report is made to the next convention, it was resolved, November 3, to instruct the architect to prepare preliminary plans and specifications also of lecture hall, administration, library, auditorium, kitchen and dining-halls, tower, professors' homes — one duplex and one single, — and heating-plant, in order to enable the Committee to arrive at an estimate of cost through tentative bids.

At this meeting the contractors' estimates on the dormitory unit were received. The figures of a responsible contractor on the dormitory unit totaled \$87,500. This figure is based on stone facing and cut stone trim. Independently of him another contractor reported

the figure \$87,351. The contractor stated that he was unable to improve on the plans and specifications in point of economy. Mr. Wischmeyer, a Lutheran architect and member of the Committee, stated that in his opinion the buildings as projected cannot in any sense be termed extravagant.

At this time the presentation drawings, now submitted to the convention, were completed by the architects.

X. Report on Building-Stone.

On December 15, 1922, the Quarry Committee reported that during an extended and somewhat adventurous trip to Arkansas, stone apparently suited for our needs had been found. Several shipments of stone were received and specimen walls built on the new Seminary grounds.

XI. Board of Directors Approves Actions of Building Committee, Recommends Collection of Special Donations, and Advocates Completion of Preliminary Drawings. The Library is Donated.

The Board of Directors of Synod at this time adopted the following resolutions: "Resolved, That all actions of the Building Committee be approved, and that the Building Committee be encouraged to secure preliminary plans for the entire group in order that the cost may be ascertained." "Resolved, That the move of the Publicity Committee to collect donations for special purposes, not to be figured into synodical appropriations, be approved. The Committee is to begin work at once." It was at a meeting of the Publicity Committee that one of our laymen announced his intention of defraying the cost of the library, approximately \$87,000.

XII. Cooperation of L. L. L. and Pledges for 1924 Program.

Up to this time all correspondence with the architect as well as all personal conferences with the firm had the purpose of so reducing the cost of this group as to approximate the amount of appropriation. The buildings were gone over time and again and eliminations made of features which, however desirable, could be eliminated without loss of efficiency and without destroying the distinctiveness of the group. At the same time a very large number of data were gathered regarding construction and equipment. During the succeeding months several members of the Committee visited various centers in an effort to obtain subscriptions towards the amount which it seemed, at this time, would in any event be needed in addition to the appropriation. Mr. Brauer and Dean Fritz now were delegated to represent the Committee at a meeting of the Laymen's League officers at Chicago

January 12 and 13. At this meeting the officers of the Laymen's League resolved to refrain from pushing their endowment fund campaign at this time and to assist in every way possible Synod's program for St. Louis. A set of resolutions was adopted and was later approved by the directors of the League. As a result of this arrangement there were obtained, during the next months, more than \$100,000 in definite pledges.

Preliminary drawings and specifications for the lecture hall, administration, auditorium, library, dining-halls, and service buildings were received in February and were given to contractors for tentative bids in order to obtain a close estimate of cost. The estimate on these buildings was \$791,000. The earlier estimate on dormitories was \$760,000. (Since these figures were submitted, there has been another rise of prices of labor and materials.) To these amounts must be added the power plant with equipment, twelve residences, a hospital, tunnels for heating-pipes, etc., other outside work and grading, and other items.

It was resolved that a joint meeting of the Board of Directors with the officers of the L. L. L., the faculty, and the Building Committee be held February 27.

XIII. Effort Made to Reduce Cost to \$1,500,000 for Buildings Only

At this meeting the situation was again thoroughly gone over, and the large gathering, composed of synodical officers and business men of distinction from all parts of our Synod, endorsed the work so far done by the Building Committee. Since it would be impossible to collect the complete amount needed for our project before Synod meets, it was resolved that the architect be instructed to submit other plans by which it would be possible to construct the buildings necessary for this group at a cost of one million and a half. The Committee was much pleased to note the spirit in which the architect met the situation at present confronting our Committee. While recognizing the difficulty of providing, for the maximum sum mentioned, a permanent, practical, and distinctive group for 400 students at the present cost of labor and material, Mr. Klauder promised that he would make a sincere effort to provide presentable drawings of a group not to exceed in cost \$1,500,000 for buildings only.

During the following weeks the efforts towards obtaining donations in large amounts were continued. As a result, there are now, in addition to the library (\$87,000), more than \$125,000 subscribed, which will be available if the first designs are adopted, — the expression of a wish, on the part of these donors, that our institution be housed in buildings which will be not only distinctive and pleasant to the eye, but, above all, fire-proof and hence low in cost of maintenance.

IV. Second Plan Submitted by the Architect. Committee Stands by First Design and is Supported by Board of Directors.

During the months of April and May the architect worked up a second set of plans. The preliminary drawings and specifications for a dormitory for fifty students were first submitted and were immediately given into the hands of a competent contractor for a tentative bid. Drawings and blue-prints of academic set of buildings — Administration Building, Lecture Halls, Auditorium, Library, Service Building, Dining-halls — were received May 12 and were studied by the Committee at a meeting May 14. At this time the contractor's estimate of the dormitory was received. His figure is \$82,360, or \$656,000 for the eight dormitories needed for 400 students. To this amount must be added the cost of the other buildings, grading, etc., bringing the total to \$2,129,000. The designs submitted are in a modified and very simple Colonial. The buildings are, in accordance with this style, rectangular blocks without the least indication of their purpose or use. The roofs are flat.

While the Committee convinced itself that the architect's firm has done excellent work in planning the layout also of this scheme, and while the substitution of the buildings in Scheme II for those of Scheme I would mean a saving of several hundred thousand dollars, the Committee did not feel that it should, on account of such saving, report to Synod the second and much inferior plan. Both designs call for fire-proof construction. The second, however, is immeasurably inferior to the first when considered as a plan for a theological seminary. The Committee does not believe that Synod wants to build in the style of Scheme II. It believes that the same emphasis which our Church has ever laid on proper churchly architecture in erecting church-buildings should apply in the case of our new Seminary, as it did in the case of our present Seminary building. The Committee believes that a dotting of grounds with several dozen large square buildings mostly with flat roofs would not be such a group as our people want. It believes that the two designs should be submitted to the convention at Fort Wayne, not as if they were equally recommended, but to demonstrate the sincerity of its efforts to reduce the cost. It should be said that the architect assures us that very material reductions, possibly \$150,000, can be made in the details of the first design. Of this the Committee was assured by a representative of the firm May 14.

The following resolutions were adopted by the Committee May 15: —

- 1) That with certain modifications, amounting possibly to \$150,000, the first design submitted be adopted.
- 2) That the construction of this group be begun as soon as in the opinion of the Board of Directors and of the Committee the time is advantageous.

On May 16 the above resolutions received the unanimous endorsement of the Board of Directors of Synod.

Respectfully submitted,

R. KRETZSCHMAR, *Chairman*
TH. GRAEBNER, *Secretary*.

ACTION.

Synod voted, by ballot, to appropriate approximately one and one half million dollars in addition to the one million appropriated in Detroit, 1920, for the execution of Plan I of the new seminary. Construction was ordered begun when in the opinion of the Board of Directors the time seems opportune. The question of erecting the buildings of brick or stone was likewise referred to the Board of Directors. The expenditure made in excess of the \$75,000 donated by the St. Louis congregations for the purchase of the new seminary site was ratified, as well as the expenditure to carry on the publicity campaign.

Concordia Seminary, Springfield, Ill.

(Report of the Board, Condensed. Germ. Rep., p. 41.)

During the past three years this institution was visited by various misfortunes. In 1920 the Lord summoned to Himself Mr. George Bettinghaus, who for many years had faithfully served Synod as a member of the Board of Control. March 8, 1921, the president of the institution, Prof. R. D. Biedermann, was also called to his eternal reward. Prof. Streckfuss was for a time totally incapacitated by illness. January, 1923, a scarlet fever epidemic threatened to break out, whereupon the institution had to be closed with a loss of nine school-days. The time lost was made up by additional work on the part of the professors and the assistance of Pastors C. A. Weiss and E. Wegehaupt.

Into the vacant presidency Rev. H. A. Klein, of Collinsville, Ill., was called. The new professorship was filled by the election of Rev. Carl Hoffmann, of Snyder, Nebr. On May 29 and 30, 1921, the diamond jubilee of the institution was celebrated.

The enrolment of the past three years was as follows:—

1920/21.	1921/22.	1922/23.
Missouri Synod ... 135	Missouri Synod ... 153	Missouri Synod ... 183
Wisconsin Synod ... 6	Wisconsin Synod ... 10	Wisconsin Synod ... 13
Slovak Synod ... 12	Slovak Synod ... 9	Slovak Synod ... 11
153	172	207

Some twenty-five students did supply-work each year. The vacancy in the Board of Control caused by the removal of Rev. C. A. Weiss was filled by Rev. Paul Schulz. A tract of land 157×320 adjoining the property was presented to the institution.

ACTION.

Synod resolved to create a new professorship and appropriated the following sums: \$1,500 for lockers, \$4,600 for repairs, \$900 for improvements in the library.

Synod extended a vote of thanks to the generous citizens of Springfield who had given about one half of a city block to the institution.

Concordia Teachers' College, River Forest, Ill.

(Report of the Board of Control, Condensed. Germ. Rep., p. 44.)

In general, good health obtained among professors and students, although two students were summoned to their eternal rest. Teacher H. C. Gaertner, of Detroit, Mich., was called to fill the new professorship granted by Synod.

The enrolment was as follows:—

Year.	Enrolment.	Graduates.
1920—1921:	209	29
1921—1922:	311	52
1922—1923:	323	28

During the present year 18 students were doing supply-work.

Large repairs became necessary in the corridors. To gain space for the laboratory, the practise-school had to be moved. This made an addition to the music hall necessary. In this way a large number of music-rooms was obtained, as well as a classroom for physics. The building was erected with the sanction of the Board of Directors.

Owing to the increased number of students it became imperative to call an additional professor. With the sanction of the Electoral College, the President of Synod, and the College of Presidents an additional professorship was created before the convention of Synod. Teacher A. Schmieding, of Saginaw, Mich., was called to fill this position.

ACTION.

Synod approved the creation of an additional professorship as an extraordinary measure as well as the expenditure of \$28,800 for the annex to the music hall. In addition, Synod appropriated \$160,000 for the requested buildings, \$8,000 for a pipe-organ, \$2,400 for pianos, \$500 for additions to the laboratory, and \$3,000 for additional shower-baths and granted the three new professorships which had also been requested.

Teachers' Seminary, Seward, Nebr.

(Report of Board of Control, Condensed. Germ. Rep., p. 46.)

The Board reported that, upon the whole, the last triennium was a successful one. The professorship authorized—to take care of entrants who had not completed the eighth grade—was filled by the election of Prof. H. L. Hardt. Assistant Professor W. Hellwege con-

sented to serve two more years. Owing to serious illness, Prof. Weller was unable to give his lessons and at present is able to do only part of the work. Since the board had sent several calls vain, Teacher J. A. Hilgendorf was appointed assistant professor.

Following was the enrolment:—

Year.	Enrolment.	Graduates.	Young Ladies.
1920—1921:	111	11	—
1921—1922:	157	12	—
1922—1923:	201	21	25

During the first two years, students and professors enjoyed good health. One death occurred in the student-body. In 1922 the school had to be closed because of an epidemic of scarlet fever from December 4 until after New Year. Shortly after school had reopened scarlet fever broke out again, and other students were taken ill with influenza; in all, there were 130 patients. By the grace of God, however, all of them recovered. The days lost were made up by extra work.

The building granted in Detroit could not be erected owing to lack of funds. The board, however, intends to begin building during the summer.

The board furthermore reported that the Nebraska District had purchased six and one half acres of land adjoining our campus and presented it to the institution. Preliminary steps to have College Ave. closed have been taken.

ACTION.

Resolved to erect a lecture hall, the time of erection and the cost (about \$150,000) to be left to the Board of Directors. For alterations in the old buildings \$1,100 was appropriated; \$4,000 for grading the campus, if necessary; \$4,100 for desks and recitation chairs; \$1,700 for temporary additions to the mess hall; \$3,000 for portable buildings to provide temporary quarters for the students till the new dormitory is completed. Since the \$100,000 appropriated in Detroit for a dormitory proved insufficient, \$25,000 more was granted, which sum is to include the cost of a heating-plant and storage-rooms. \$150,000 was appropriated for a service building, to house mess hall, kitchen, and hospital.

Concordia College, Fort Wayne, Ind.

(Report of Board of Control, Condensed. Germ. Rep., p. 50.)

The professorships created by the Detroit convention were filled by calling Professors E. Schnedler, Paul F. Bente, and M. Bertram. Vacancies arising from the resignations of Professors F. Zucker, D. D., and W. L. Moll were filled by calling Professors Hansen and Geo. P. Schmidt. Professor Kirsch was called to teach Septima. Professor Thomas Bakalar, called and salaried by the Slovak Synod, has

come a member of the faculty. In addition, we have the following assistant professors: Stoeppelwerth, Herrling, Henrichs, and Roehrs, all of theology. Prof. emeritus Aug. Crull has been called to his normal reward.

In the fall of 1920 84 new students were enrolled; in 1921, 122; in 1922, 126; total enrolment at the beginning of 1922—23, 338. In order to accommodate the students, the old building, long ago condemned by Synod, was remodeled for bedrooms, and a portable building erected for living quarters. "Portables" do not suit our needs; their construction is too frail. — Good health prevailed. The institution was never closed.

ACTION.

Synod granted three professors, two dormitories, one to be completed, if possible, by February, 1924; \$12,000 for boiler, stack, and alterations in the heating-plant; \$15,000 for boilers and bunkers, to be erected in 1924. A third dormitory and the sum requested for locating the campus on another part of the college grounds were declined. \$7,500 was voted for the chemical laboratory and apparatus, but payment is to be deferred until the sums voted to other colleges in 1920 for similar purposes will have been paid.

Concordia College, Milwaukee, Wis.

(Report of Board of Control, Condensed. Germ. Rep., p. 51.)

The Board of Control reported the following enrolment: 1920—21, 194; 1921—22, 205; 1922—23, 235. Two deaths occurred in the student-body and two in the board, Mr. W. A. Starke and his successor, Mr. Theo. M. Krumsieg. The vacancy was filled by Mr. Martin Keller.

The following changes took place in the faculty. Owing to the necessity of providing parallel classes, it was necessary to create another professorship, which was done with the consent of the Board of Directors. President M. Albrecht was elected to the new position. The vacant presidency of the institution was filled by calling Rev. G. Chr. Barth. The vacancy caused by the resignation of Dr. C. Gaenssle was filled by the election of Prof. M. Graebner.

The central heating-plant authorized in Detroit was installed. A residence was provided for the new professor by the purchase of a dwelling adjoining the campus for \$8,000.

The board also reported that a neighboring property, 438×265 feet, had been purchased by the Milwaukee congregations and presented to the institution.

ACTION.

Synod approved the creation of a new professorship during the past triennium and the purchase of a residence for \$8,000. Two additional professors were granted; \$150,000 was appropriated for

a new dormitory and \$150,000 for a service building and hospital. The request for alterations was not granted because the Board of Directors can attend to whatever is necessary in this respect. A vote of thanks was given the congregations of Milwaukee for making a gift to the college of a campus site, valued at \$22,500, and up to \$5,000 was appropriated for grading it.

Concordia College, St. Paul, Minn.

(Report of Board of Control, Condensed. Germ. Rep., p. 54.)

The Board of Control reported an unprecedented enrolment 1920—21, 173; 1921—22, 222; 1922—23, 238, an increase of 43 per cent. over the preceding triennium.

Owing to the increased work Rev. F. Wahlers was called as assistant professor. The vacancy caused by the resignation of Dr. Abbetmeyer was filled by Prof. L. Blankenbuehler of Portland, Oreg. Dr. Ylvisaker, who was in the service of the Norwegian Synod as professor at our institution, resigned to take charge of a congregation. His position will be filled again. The Norwegian Synod is also served by Professor Faye.

The resolutions of the Detroit convention were carried out. A central heating-plant was installed for \$10,000. The campus has been graded. For this purpose the Lutheran Education Association of the Northwest donated \$2,000, which was added to the \$3,000 appropriated by Synod. Mr. and Mrs. Ernst Rubbert presented the institution with a splendid Luther statue. The institution has been accredited by the University of Minnesota.

ACTION.

Synod authorized the calling of two new professors, appropriated \$125,000 for a dormitory, \$7,500 for repairing the mess hall, \$1,200 for alterations in the stationery and reading-room, and passed a resolution of thanks to be extended the Lutheran Education Society and Mr. and Mrs. Ernst Rubbert for their donations.

St. Paul's College, Concordia, Mo.

(Report of Board of Control, Condensed. Germ. Rep., p. 57.)

The enrolment at this college was as follows:—

Year.	Enrolment.	Graduates.
1920—1921:	123	17
1921—1922:	111	13
1922—1923:	119	23

The following changes took place in the faculty. In May, 1920, Prof. A. Haentzschel was called away, and in May, 1921, Prof. W.

ndt. The vacancies were filled by Pastors O. Krueger and Wismar. Owing to his advanced age the number of lessons given by Prof. Baepler were reduced to a minimum. Three different assistant professors served the institution. A Septima has been arranged. In general, good health prevailed, although two students passed away.

The foundation of the lecture hall has been strengthened by concrete pillars placed on bed-rock. Citizens of Concordia subscribed \$750 for drilling a new well. Members of our congregations in and about Concordia are prepared to present a site of six and a half acres if the institution remains at the old place.

ACTION.

Synod resolved to continue the institution at Concordia. Appropriations: \$125,000 for a dormitory, \$750 for urinals, \$629 for a pump-house, and \$6,000 for the purchase of the president's residence. The request for certain repairs on the walls (cf. *Memorials*, p. 20) was declined since they were not absolutely necessary. A vote of thanks was tendered the city council for free water while the college well was being repaired, to the congregation members and others for the donation of a tract of land valued at \$10,000, and to the Commercial Club of Concordia for a donation toward the new college well.

Concordia Institute, Bronxville, N. Y.

(Report of Board of Control, Condensed. Germ. Rep., p. 62.)

The regular faculty of eight men, called by Synod, is augmented by Prof. H. C. Engelbrecht, salaried by the Lutheran Education Society, and by two assistants, one partly salaried by the Lutheran Education Society. The number of pupils grew from 158 in 1920—21 to 163 in 1921—22 and to 172 in 1922—23. Owing to lack of accommodations 19 students were refused admission; none of these, however, had the ministry in view. 76 per cent. of the students are preparing for the ministry. Experience has proved that of the remaining 24 per cent. some 10 per cent. can be gained for the ministry. — A new heating-plant became necessary and was installed.

ACTION.

Synod approved the installation of the heating-plant at a cost of \$22,376.19, appropriated \$125,000 for a dormitory, granting permission to construct it immediately if a non-interest-bearing loan can be secured, and authorized the calling of another professor. Synod furthermore resolved not to sell any of its Bronxville property, but to authorize the Board of Control and the Board of Directors to make provisions for a campus.

St. John's College, Winfield, Kans.

(Report of Board of Control, Condensed. Germ. Rep., p. 65.)

The attendance during the past year was 198: 142 ministerial students, 22 general students (12 boys and 10 girls), 34 business students (8 girls). The young ladies board with private families. The faculty consists of five professors and five assistants; the local pastor also gives ten lessons a week. Two professors instruct in the Business Department, two ladies give piano lessons, and one lady teaches Reading and Expression. The last five are not salaried by Synod. The Business Department pays an annual rental to Synod for classroom space.

The course is divided into a three-year high school course and a three-year college course. The high school course is accredited with the State. Accreditation of the college course is in view. The Business Department is also accredited. The library was greatly increased, and the laboratories were modernized.

September 1, 1920, Prof. A. E. Kunzmann was inducted into office. In January, 1922, Prof. M. Graebner was called to Milwaukee. The vacancy was filled by Prof. W. Wente. During the past year he was on leave of absence to pursue advanced studies abroad.

During the past three years the following land donations were received: Mrs. Sylvia Smith willed the college two corner lots, and the Kansas District acquired one half of a block east of the lecture hall for \$5,850.

ACTION.

Synod granted two professors, appropriated about \$130,000 for a new lecture hall, \$5,000 for alterations in the present lecture hall, and up to \$20,000 for a new hospital. Synod resolved to thank the donors of the land presented the school and voted \$30,000 for a central heating-plant.

NORMAL COURSE.

The Kansas District's request that a normal course be instituted at St. John's was *declined*.

Concordia College, Conover, N. C.

(Report of Board of Control, Condensed. Germ. Rep., p. 70.)

The board reported that the High School Department had been accredited by the State of North Carolina as a standard high school. The enrolment was as follows: 1920—21, 63; 1921—22, 71; 1922—23, 67. Of the boys enrolled, 13 have the ministry in view. \$3,177.48 tuition from non-ministerial students was turned over to Synod's Treasurer. Only the most necessary repairs were made.

No requests for appropriations were made.

Concordia College, Oakland, Cal.

(Report of Board of Control, Condensed. Germ. Rep., p. 71.)

The enrolment was as follows: 1920—21, 66; 1921—22, 74; 1922—23, 71. During the past triennium 14 graduates entered Concordia Seminary, St. Louis. Owing to the increased attendance the gymnasium had to be remodeled and used for dormitory purposes; cost, \$4,620. \$1,350 was expended for the equipment of sick-rooms. Both sums were raised by the District. According to a resolution passed at the District convention of the California and Nevada District in 1922, the institution was offered to Synod. The property consists of a cement building erected in 1915 and five acres, representing a value of \$75,000. The property is without encumbrance.

ACTION.

Synod resolved to accept the tender of the institution. The residence at present occupied by the president was ordered purchased for \$5,300, as well as an adjoining site of five acres for \$7,500. An additional professorship was authorized.

Concordia College, Portland, Oreg.

(Report of Board of Control, Condensed. Germ. Rep., p. 73.)

The following enrolment was reported: 1920—21, 20; 1921—22, 22; 1922—23, 42. The vacancy caused by Prof. Blankenbuehler's going to St. Paul was filled by Prof. Ed Brandt. Student Fuerbringer assisted last year.

During the past three years sewers were built (cost, \$3,600), and the attic was remodeled for dormitory purposes (cost, \$3,300). Feeling itself unable to care for the institution as it ought to be done, the Oregon and Washington District tendered the institution to Synod free of debt. The property represents a value of \$30,000. One additional professor was requested.

ACTION.

Synod accepted the tender of the institution and granted an additional professor.

Concordia College, Edmonton, Alta., Can.

(Report of the Board, Condensed. Germ. Rep., p. 75.)

The Board reported that after careful investigation on the part of the Board of Directors the institution was located at Edmonton. The following men were appointed to constitute the Board of Control: Pastors E. Eberhardt and A. Rehwinkel and Messrs. J. Ulmer, H. Mashmeyer, and Ed Schmidt; Electoral College: Pastors J. Herzer, A. Schwermann, H. Elling, C. Wetzstein, and P. Wiegner. July 5,

1921, Pastor A. H. Schwermann was elected president of the institution. October 31 the institution was formally opened. Rev. Hage of the Board of Directors, preached the sermon. 35 students attended during the first year. The institution was quartered in rented buildings. Owing to the number of students, Pastor Rehwinkel was first appointed assistant professor and later on elected regular professor (September 17, 1922). The attendance during the second year was 51.

ACTION.

Synod referred the question of moving the institution to the Board of Directors, with power to act. The request for a Junior College was held to be covered by the resolutions of 1920. In addition to previous appropriations, \$75,000 was appropriated. The committee also reported that the Manitoba and Saskatchewan District has promised to donate a site. \$1,651 was appropriated for equipment and previous expenditures.

Institution in Texas.

(Germ. Rep., p. 84.)

The Texas District presented a memorial requesting Synod to establish a higher institution in Texas. The following reasons were advanced:—

1. The size of the State, necessitating long journeys by students from the State to reach our nearest institution;
2. The necessity of providing a ministry composed more largely of Texas men;
3. The need of providing educational facilities to Lutherans of the State.

ACTION.

Synod resolved to found a high school in Texas and appropriated up to \$50,000 for this purpose in addition to the \$30,000 promised by the District. The Board of Directors was empowered to determine upon the particulars, *e. g.*, time, place of location, etc., in conjunction with the District.

Concordia College, Porto Alegre, Brazil.

(Report of the Board, Condensed. Germ. Rep., p. 82.)

Of the \$60,000 appropriated in Detroit, \$35,000 was spent in purchasing a new site and buildings, \$4,000 for a professor's residence, and \$200 for a structure to house the electric motor. Attendance during 1921—22, 24 (11 graduates); during 1922—23, 38. During 1921 Prof. Rehfeldt was in this country on a leave of absence. In 1922 Profs. Kunstmann and Tietboehl resigned, the latter because of ill health. The entire board having sided with Prof. Kunstmann,

A new Board of Control was organized, composed of Rev. Otto Beer, Messrs. W. Goerl, R. Petzhold, and G. Engelmann. The board requested \$1,500 for previous expenditures and for current maintenance expenses.

ACTION.

Synod referred all questions pertaining to this institution to the Board of Directors.

Residence for the President of Synod.

Pursuant to a petition of the Chicago Pastoral Conference and upon recommendation of the committee, Synod resolved to provide for a permanent residence for the President.

Professors' Residences.

(Germ. Rep., p. 84.)

Twenty-eight professors' residences were requested by the boards of various institutions. Synod appropriated \$100,000 for this purpose, referring the matter of erecting the individual residences to the Board of Directors.

MISSIONS.**Home Missions in North America.**

(Report of the Board. Germ. Rep., p. 86.)

Although the work of Home Missions in North America does not show the same numerical increase experienced in the past when thousands of immigrants called for Lutheran pastors, still God has richly blessed our efforts in this field. New territories have been opened in States where we have been at work, as well as in States where formerly we had no workers. Old territories were strengthened. Two mission-districts have become synodical Districts. Special attention has been paid to work in the large cities. Missionaries and traveling pastors have performed their arduous labors with great self-sacrifice, under the protection of God. For all this we thank His glorious name!

The annual conferences of the Board for Home Mission together with the representatives of the District mission boards have materially contributed to the blessed progress of this work.

Complete statistics are not available; six Districts and two missions made no reports. Twenty reports were received. They show 1,073 preaching-stations and mission-congregations, an increase of 75; 109 congregations which became self-supporting; 77,876 souls, an increase of 19,866; 39,077 communicants, an increase of 12,022; 3,881

children in parochial schools, an increase of 992; 15,872 Sunday school pupils, an increase of 9,079. 531 workers are engaged in the mission-work of the twenty Districts reporting. The total amount disbursed to 11 Districts and 2 missions was \$274,094.51.

ACTION.

Synod resolved —

1. To continue the annual mission conferences and to urge all District mission boards to take part in this conference;
2. To call upon individual Districts regularly and punctually to send their reports;
3. To encourage all Districts to collect for the General Mission Treasury just as well as for the District Mission Treasury;
4. To encourage all Districts to appoint a District Director of Missions, either alone or in conjunction with a neighboring District;
5. To postpone, for the present, the appointment of one or more general Directors of Missions.
6. The President is to appoint a committee of three which is to concern itself with the spiritual welfare of students from our circles who are attending non-Lutheran institutions. Said committee is to ascertain, as definitely as possible, the names and addresses of these students together with other pertinent facts and deliberate on how to meet the situation.
7. Said committee is to begin its work immediately and report to the District synods.
8. From time to time said committee is to send the information it has gathered to the District mission boards and to pastors and conferences to whom it may be serviceable.
9. All pastors are to be earnestly requested to assist the committee in obtaining this information.
10. This committee is to obtain information on student work as carried on by other church-bodies.
11. The Board of Directors is to be authorized to pay the expenses incurred by this committee and to receive contributions for this purpose.

General Church Extension Fund.

(Report of the Board, Condensed. Germ. Rep., p. 89.)

The offering lifted in the Jubilee Year, 1922, for this treasury amounted to \$67,899.85, bringing the total capital to \$858,000. This money is at present loaned to 320 congregations. Since 1902, when the fund was begun, 367 congregations have been supported to the extent of \$1,025,000. These congregations are spread over almost all States of the Union and Canada; but also England and Cuba are represented. 284 churches, 18 schools, and 65 parsonages were com-

pleted with the aid of these loans. Applications for loans amounting to \$400,350 were received during 1921; 1922, \$152,350. Only the most urgent of these could be granted. In order to carry on this growing work with any measure of success, a fund of at least two million dollars is needed.

ACTION.

Synod resolved —

1. To encourage the pastors repeatedly to bring to the attention of their congregations the importance of the Church Extension Fund for successful Home Mission work;
2. To grant the Board's request for separate incorporation;
3. To authorize the Church Extension Board to charge 5 per cent. administration expenses on the initial loan covering five years, which amount is to be discounted upon the payment of the loan, since within a few years it will actually cost Synod that much to help congregations with such non-interest-bearing loans;
4. To authorize the election of a salaried Executive Secretary of the General Church Extension Board. He is to be elected from the candidates nominated by congregations by the President of Synod, the General Church Extension Board, and the General Mission Board represented by a single vote.

Home Missions in Foreign Countries.

(Report of the Board, Condensed. Germ. Rep., p. 94.)

Under the blessings of God this work has expanded enormously during the past three years. — The vacancies in the board caused by the resignations of Pastor E. Zapf and Mr. Carl Zollmann were filled by Pastor E. G. Jehn and Mr. H. F. Rohrman. Owing to the increased work two members were added: Rev. Aug. Burgdorf for correspondence with South America and Prof. W. H. T. Dau for correspondence with Europe. Thirty-six regular and thirty-three special meetings were conducted. Pastor Burgdorf was sent to South America, where his presence proved of material assistance to the brethren in the dark days following the resignation of Prof. Kunstmann. Prof. Dau was sent to Europe. No special report was received from London. In general, the work is progressing.

Europe.

Our chief work in Europe is still the support of the Saxon Free Church, which is composed of 30 pastors, 7,938 souls, 5,491 communicants, 1,764 voters, and 121 preaching-stations. The great need of this body is appropriate churches. During the war the Saxon Free Church found itself compelled to provide for the education of its pastors. A beginning was made in Leipzig. On recommendation

of the presidents of our Districts this seminary was reorganized. A suitable property, located in Zehlendorf, near Berlin, was presented by some generous members of our Synod. The presidents had also promised a professor from America.

Due to the work of the American Lutheran Board for Relief in Europe, our work has spread far beyond the confines of the Free Church. Numerous contacts have been established, and large quantities of our literature have been sent abroad. Hence it would be advisable to have at least one representative abroad.

ACTION.

Synod resolved—

1. To create a Board for Missions in Europe and a Board for Missions in South America in place of the Board for Home Missions in Foreign Countries;
2. To locate the Board for Missions in Europe in and about New York in order to facilitate cooperation with the American Lutheran Board for Relief in Europe;
3. To decline the request for a salaried secretary for the Board of Missions in Europe;
4. To lend a member of the St. Louis faculty to the seminary in Zehlendorf who is to direct the institution (Prof. Geo. Mezger, D. D., was selected for this work);
5. To authorize the Board for Missions in Europe to send another member of the St. Louis faculty after the first one sent over has returned, even if a permanent director has been elected;
6. To send a representative to Europe who is to attend the meetings of all important committees of the Free Church;
7. To empower the Board for Missions in Europe, in conjunction with the President, to define and fix the duties of this representative;
8. To authorize the Board for Missions in Europe to begin mission-work in Europe wherever fields present themselves, even where the Free Church has not been instrumental in securing them for us;
9. To empower the Board of Directors to send a business man to Europe, who is to examine the business requests which the Saxon *Schriftenverein* directed to Synod;
10. To authorize the Board for Missions in Europe to grant or to deny the requests of the *Schriftenverein* on the basis of this investigation;
11. Not to forget the work of our brethren in Europe, but to remember it in our prayers and to support it according to the best of our ability, lest an opportunity of spreading the Gospel which now presents itself be lost;

12. To give voice to the request that cash donations accompany the shipments of food and clothing in order to enable the Saxon *Schriftenverein* to distribute also Christian literature when dispensing charity.

South America.

(Report of the Board, Condensed. Germ. Rep., pp. 96—100. 107. 108.)

In spite of the dangers which for a time threatened this field, the usual progress can be reported. A number of candidates were sent to South America, as the ten candidates graduated from Porto Alegre a year and a half ago did not suffice. Seven missionaries have returned to America. The visitation resolved upon in Detroit was carried out as far as possible by a member of the Board. Our missionaries experience peculiar difficulties since they are often called upon to serve societies composed of members of various faiths. In such cases they must declare their readiness to preach to them for the purpose of organizing into a congregation such as receive the truth.

STATISTICS.

Brazil: 38 pastors (20 natives), 30 congregations belonging to Synod, 62 congregations not belonging to Synod, 31 preaching-stations, 18,310 souls. 31 pastors, 5 teachers, 24 assistants, and 3 lady teachers instruct 1,650 pupils in parochial schools. Disbursements: 1920, \$32,975.48; 1921, \$42,005.28; 1922, \$44,889.75.

Lusobrazilian Missions: Four pastors devote their entire time to this work; one, part of his time. A building was erected in Lagoa Vermelha; cost, \$3,000 to \$4,000. The site was donated by the state authorities.

Argentina: 13 missionaries (2 natives), 59 stations, 4,769 souls. Disbursements: 1920, \$10,783.51; 1921, \$12,815.34; 1922, \$16,470.04.

Work has also been begun in *Paraguay*, a few stations being served by Missionary Huebner, and in *Mexico*.

ACTION.

Synod resolved—

1. That South American congregations fix the salaries of their ministers and teachers themselves since they have both the right and the duty to do so;
2. That subsidy may be granted to such congregations as are unable to raise the salaries of their pastors, provided they present a request for the amount they are unable to raise in spite of earnest effort;
3. That the subsidy be granted by having the Board for Missions in South America together with the brethren in South America fix the normal salary, including minimum and maximum;

4. That this salary apply also to missionaries who are entirely supported by Synod;

5. That in special cases the board be empowered to act according to its judgment in the matter;

6. That congratulations be sent to the Brazil District on the occasion of its twenty-fifth anniversary in 1925, and that the representative of the board to be sent down there for the occasion take part in the festivities and at the same time regulate such matters as may be pending;

7. That the Brazil District be empowered to call a Director of Missions if it deems it necessary;

8. That the Brazil District be authorized to add one year to the course of the proseminary if the local Board of Control and the Board of Directors consider it necessary;

9. That Synod decline to grant the request asking it to pay the traveling expenses of two delegates from Brazil;

10. To refer the request of the congregation at Porto Alegre (which is building a church and desires Synod to lend it a helping hand) to the Board for Missions in South America.

World Congress of Lutherans in Leipzig and Eisenach.

The President's action refusing to appoint delegates to attend this unionistic congress was sustained.

Foreign Missions.

(Report of the Board, Condensed. Germ. Rep., p. 108.)

The resolutions of the 1920 convention at Detroit authorizing the calling of a Director of Foreign Missions was carried out by calling Vice-President F. Brand. He has since visited our missions in India and China. He attends to the official correspondence with the missionaries and carries out Synod's resolutions with regard to our Foreign Missions. Besides, he is constantly at work delivering lectures on Foreign Missions, writing articles for our periodicals, etc. It is also planned to have him give courses of lectures on missions at our seminaries.

India.

During the past three years all the restraints against our missionaries have been removed. Accordingly 11 candidates and 3 pastors, one of whom had previously served in India, were called into this field. Two of these brethren are from Australia. A teacher and superintendent for the Mountain Home was secured. Also four female missionary helpers were sent over. The medical mission supported by our ladies' societies was enlarged. Dr. Doederlein, of Chicago,

volunteered to serve two years. In addition, two native pastors began work, Mr. Jesudason, the first missionary from the midst of our own mission, and Pastor N. Samuel, who withdrew from the former Leipzig Mission for reasons of conscience.

Statistics. — White workers: 20 missionaries, 1 teacher, 1 doctor, 5 unmarried woman workers (3 nurses). Native workers: 2 pastors, 2 evangelists, 41 catechists. 4,967 souls, 1,888 catechumens. 2,595 baptized souls, 661 communicant members. In 1922 130 heathen were baptized. We have 90 stations, 47 sites, 15 missionaries' dwellings (four of them being rented); 28 churches, 25 pandels (open sheds), 29 school-buildings, 35 homes for native workers, 77 schools. Teachers: 71 Lutherans, 30 from other denominations, 66 heathen. Lady teachers: 15 Lutherans, 3 non-Lutherans. Pupils: 871 baptized, 3,295 not baptized.

China.

Seven missionaries and one lady teacher were added to our workers in China. One of these is from the Norwegian Synod and one from the Lutheran Synod of Australia.

Statistics. — 3 stations, 14 missionaries, 1 lady teacher, 9 native evangelists, 42 teachers and assistants, of whom 23 are members of our Church, while 8 more are catechumens, 8 non-Lutherans, and 3 heathen; 239 communicants, 328 baptized. 85 were baptized, and 132 are receiving instruction for confirmation. Chapels, 11; schools, 12; pupils, 1,073. 41 children were cared for in our orphanage in Shihnanfu. In Hankow we conduct a dispensary. The language school is attended by 10. An average of 68 services a week were conducted.

The great need of our missions are native workers who have been educated in our institutions. Hence the board is planning to erect seminaries in both India and China. In India we have had schools for catechists for some time. It is planned to add a school for pastors. In China a kind of practical seminary has been begun; attendance, 17.

Disbursements: 1920, \$81,357.45; 1921, \$109,393.43; 1922, \$133,661.51.

ACTION.

Synod resolved—

1. To acknowledge with thanks to God the progress made during the past three years and to urge all congregations to inform themselves regarding the status of our mission-work;

2. To express its cordial thanks to the Lutheran Synod of Australia, the Norwegian Lutheran Synod, the members of the Walther League, and the ladies' aid societies of our Synod for their

generous and cheerful help and to request them to continue their support in future;

3. Earnestly to beseech all congregations to support our entire mission-work with prayers and Christian generosity and in the same way to promote also the Foreign Missions in order a) to clear the deficit of the treasury, b) to make possible the speedy purchase of sites and the erection of needed buildings, and c) to enable the mission itself to be extended energetically and soundly;

4. To ask pastors, teachers, and congregations to do everything in their power to acquaint themselves with our foreign missions and to arouse, promote, and preserve a genuine interest in this work of the Lord, and to recommend that pastors and congregations arrange for mission-study hours besides the regular mission-festivals and use especially the Epiphany season for this purpose, that teachers familiarize their pupils in schools with our missions, and that the Board of Foreign Missions and the Director of Foreign Missions provide mission-tracts in German and English in addition to what is published in our periodicals;

5. To ask the ladies' aid and the young ladies' societies to make it a point systematically to work and provide for the continuation and expansion of the medical mission, mountain homes, and orphanages and to suggest to congregations, Sunday-schools, and other organizations that they support a native mission worker or a pupil of a boarding-school.

It was reported at synod that some converted heathen who were formerly served by Leipzig missionaries had requested the services of our missionaries since the successors of the Leipzig missionaries did not instruct and serve them in a truly Lutheran spirit. They urgently requested our Director of Missions to come to India and investigate the matter in order that further steps may be taken.

Synod hereupon resolved to entrust this entire matter to the Board of Foreign Missions.

The missionaries who attended the convention at Fort Wayne were presented to Synod, and their faithful services under great difficulties were acknowledged by a vote of thanks. The Director of Foreign Missions was instructed to extend Synod's thanks to the Walther League at its coming convention for the generous support of eleven missionaries.

Deaf-Mute Missions.

(Report of the Board, Condensed. Germ. Rep., p. 114.)

Work among the deaf-mutes was begun twenty-five years ago. At present it has been extended over the entire United States. Mission-stations, 90; organized congregations, 10. During the past triennium 15 missionaries labored in this mission. A large mission-

field, in which there is no competition, has been opened to us in the States of Washington and Idaho, especially in the state schools. Chapels and parsonages are needed in a number of places. The budget for 1923 amounts to \$28,000. At present the treasury shows a deficit of \$12,000. This is largely due to the fact that special collections for this mission are less common since the introduction of the budget system. The annual contributions of the deaf-mutes approximate \$2,000.

ACTION.

1. Since special collections for this treasury are decreasing rather than increasing and the treasury is dependent on the budget, Synod recommended all congregations to introduce the budget system.

2. The resolution of Synod passed at several conventions, recommending to our congregations to lift a collection for our Deaf-mute Missions on the 12th Sunday after Trinity, was not rescinded, but is to remain in force. The editors of both the *Lutheraner* and the *Witness* are to call attention to the matter.

3. The Mission Board was encouraged to erect chapels and parsonages in Detroit, St. Louis, St. Paul, Omaha, New York, and Kansas City in order to save the expenditures for rent.

Literature for the Blind.

The question of providing Christian literature in raised type for the blind was brought before Synod.

Synod resolved that this question be referred to the Deaf-mute Mission Board, which is to look into the matter and report at the next convention.

Jewish Mission.

(Germ. Rep., p. 116.)

The committee reported that it had carefully read the report of Jewish Mission work in New York. Pastor Friedmann has shown himself most diligent in his missionary activities. Even if no great visible results can be seen, our Synod has done its duty in preaching the Gospel to the Jews of New York.

The board was empowered to purchase a home for the missionary, especially as a suitable house can be purchased and fitted out for \$8,100.

Foreign-Tongue Missions.

(Report of the Board, Condensed. Germ. Rep., p. 119.)

While the Foreign-tongue Mission work has not increased much in extent, there has been a constant inner growth. The foreign-tongue congregations have materially increased their contributions. Owing to peculiar circumstances, the board found itself compelled

to exceed its quota. The proposed increased number of workers make an increased budget necessary. Two teachers at Polish parochial schools were subsidized: in Chicago, Ill., and Scranton, Pa. Fourteen pastors serve 37 congregations. The salaries of these missionaries have been put on a par with those of home missionaries. In Philadelphia, Pa., St. John's Congregation (W. G. Schwab, pastor) and the Lettish congregation have united. The combined congregation has called Candidate J. Graudin as second pastor. He is to serve the Lettish membership as long as necessary. \$1,439.11 has been received toward the purchase of a church property for the Italian mission in West Hoboken, N. J. Total disbursements, \$35,488.90.

ACTION.

Resolved —

1. To encourage pupils at our institutions to learn one or the other of the languages which they could profitably use in our Foreign-tongue Missions and to apprise the theological faculties of this resolution through the Foreign-tongue Mission Board;
2. To instruct the Foreign-tongue Mission Board to devise ways and means how foreign-tongue Lutheran immigrants may be directed to our Lutheran congregations when they come to large cities;
3. To adopt the financial report.

Indian Missions.

(Report of the Board, Condensed. Germ. Rep., p. 124.)

The new dormitory was completed at a cost of \$37,172.71 and dedicated May 22, 1921. The old building was remodeled and now serves as a school. During the past three years Missionary H. M. Tjernagel preached at Red Springs, Morgan Siding, and Neopit.

Red Springs is the chief station. Besides the church, Synod maintains a boarding-school here, which was attended by approximately 100 children. A number of adults were baptized and confirmed. Fortnightly services are conducted in the afternoon at Morgan Siding and Neopit. The board regrets to report that Rev. Tjernagel has accepted a call to a congregation of the Norwegian Synod.

Cornelius Aaron, an Indian, who graduated from Concordia Seminary, St. Louis, in June, has been called to the Oneida Reservation near Green Bay, Wis. This is a promising field; the reservation numbers about 4,000 souls. Thirty children from this reservation attend our school. On the reservation there are also a number of confirmed Lutherans.

In accordance with the resolution of the 1920 convention attempts were made to open a mission on the White Earth Reservation in Minn.

... Pastor E. Yurawitz was called for this purpose. After a careful survey of the field it developed that a mission could be opened only if Synod would begin an Indian institute. Since the necessary money had not been appropriated for this purpose, the project was abandoned. Another door was opened to us at the Red Lake Indian Reservation in Minnesota, where our Government conducts a boarding-school. In this reservation the Gospel has never been preached. The superintendent of the reservation has promised to permit our missionary to give daily instruction in religion in the Government school during the so-called hymn-singing hour and to erect a chapel if Synod resolves to begin the mission.

ACTION.

Resolved —

1. To approve the additional expenditure for the boarding-school at Red Springs;
2. To fill the vacancy caused by the calling away of Pastor Tjernagel as soon as possible;
3. To rejoice over the fact that a native Indian, Rev. Cornelius Aaron, educated at St. Louis, has been called, since the prospects among the Oneidas are so promising;
4. To have the Subcommittee for Indian Mission in Minnesota, together with two members of the Minnesota Home Mission Board, once more look into the prospects at the Red Lake Reservation and to appropriate \$5,000 for this mission in case a favorable report is made.

Immigrant Mission.

(Germ. Rep., p. 128.)

The work of our Immigrant Mission progressed quietly during the past years and was graciously blessed by the Lord. The decrease in work among immigrants was more than counterbalanced by an increase of work in connection with relief work in Europe, so that it became necessary to have an assistant for a time. Since it proved unwise to continue renting a house for the missionary, a dwelling was purchased. During the past years a surplus of \$10,000 was turned over to the Synodical Treasury.

ACTION.

Synod passed the following *resolutions*:—

1. To approve the election of Rev. J. N. H. Jahn, Ph. D., and Mr. W. Burgdorf to fill the vacancies caused by the resignation of Rev. Chr. Merkel, who was called to another field of labor, and the death of Mr. H. Bessmeyer;
2. To approve the purchase of a mission-house;

3. To accept the audited financial report;
4. To recommend that the Immigrant Mission offer to serve the elders from our circles by procuring their transportation abroad, since it nets a good profit;
5. To call a second missionary;
6. To refer the request of Immanuel Congregation, East Boston for a subsidy of \$400 for the pastor, who is doing some mission-work among immigrants, to the Immigrant Mission Board, with power to act.

Seamen's Mission.

(Germ. Rep., p. 128.)

The Seamen's Mission is conducted by Pastor Pinkert. It is carried on under the supervision of the Immigrant Mission Board. — The financial report was adopted. Disbursements: 1921, \$3,283.97; 1922, \$3,381.47. Expenses were reduced at the beginning of 1923.

American Lutheran Board for Relief in Europe.

(Germ. Rep., p. 130.)

Since this work was begun, four years ago, the total receipts to January 31, 1923, amounted to \$640,157.72. The expense of management is 2.192 per cent. of the total income, covered by special donations and not deducted from donations for relief work. 2,603 shipments of clothing were made.

Synod resolved —

1. To continue the work for three more years;
2. To secure a better regulation of the financial activities by having its business representative who is to be sent to Europe investigate the financial activities of the Board in Europe;
3. To adopt the audited financial reports.

CONSTITUTIONAL MATTERS.

Additions to the Constitution.

(Germ. Rep., p. 134.)

The following addition was made to By-Laws, § 12 D, "Rights and Duties of District Presidents": —

"Whenever candidates for the ministry or for the teaching profession who come to us from other synods, or bodies not in doctrinal unity with Synod desire to be received as members of Synod, the District President shall publish their names in the synodical organ

and demand that they be colloquized by a synodical Board of Examiners. The result of such colloquy is to decide whether they can be received, ordained, and installed."

The present § 12 A, on the Election of District Presidents, was ordered designated § 12 A, 1. The following regulations were then resolved upon: —

"2. Every District of Synod shall elect, also by an absolute majority, a secretary and a treasurer.

"3. No person may be elected into the office of a District if he already fills a similar synodical office. If the official of a District is elected into a similar office of Synod, he automatically vacates the District office by accepting such synodical office.

"4. In general, no person shall, either in the General Body or in a District, fill two offices whose duties conflict with one another."

Committee on Nominations.

(Germ. Rep., p. 135.)

Synod resolved to change § 3 of the Election Laws so that in future the Nominating Committee is to be elected as follows: A committee of seven members, composed of three pastors, three delegates, and one teacher, shall be elected as prescribed by the Election Laws. This Election Committee for the Nominating Committee shall convene after the District meetings preceding the National Convention have adjourned, elect the Nominating Committee from the delegates elected by the Districts, apprise these of their election in due time, and publish their names in the *Lutheraner* and the *Lutheran Witness*.

Standing Constitutional Committee.

(Germ. Rep., p. 132.)

Synod resolved to appoint a standing Constitutional Committee, to be composed of three members. In legal matters this committee is to consult with an attorney from our midst. It shall also be represented at the deliberations of the Committee on Constitutional Matters.

Translation of Constitution.

(Germ. Rep., p. 144.)

The committee charged with the final revision of the English translation of the constitution was ordered to turn the manuscript, after the completion of its task, over to the standing Constitutional Committee for publication in our synodical papers. If no protest is registered within the specified time, the translation shall be recognized as official.

NOTE. — The statement, "Following is the official English version of the new constitution," found in the *Proceedings* of the 31st National Convention of the Ev. Luth. Synod of Missouri, Ohio and Other States, page 30, was declared premature.

The committee reported that the synodical rules and regulations for various boards had also been translated into English. They were referred to the committee in charge of revising the translation of the constitution.

Incorporation in Canada.

(Germ. Rep., p. 142.)

"WHEREAS, It may appear advantageous for the Synod of Missouri, Ohio, and Other States to become incorporated or registered as a corporation in the Dominion of Canada and other foreign countries; therefore be it

"Resolved by said Synod, in regular convention assembled in the city of Fort Wayne, Ind., on the 22d day of June, 1923, That the president and secretary and other proper officers of the same be, and they hereby are, authorized and empowered, subject to the consent of the Board of Directors, to execute, file, and deliver all documents for such purpose necessary and proper, and to do all other acts necessary and proper for effecting such incorporation or registration."

Rights of Advisory Members.

(Germ. Rep., p. 133.)

The rights of advisory members of Synod, pastors, professors, and teachers, were defined as follows: They have the right of speech in all synodical meetings; they may appeal to the voting members to make a motion which suits them and to second it; they are eligible to membership on committees and to certain offices of Districts as, for instance, to the office of visitor or to offices of the General Body; they also may present memorials to Synod.

Since no additional essential rights would be conferred upon them by granting them the right to make and to second motions, Synod resolved to abide by its rule of seventy-five years' standing.

Creation of New Offices.

(Germ. Rep., p. 140.)

In the matter of creating new offices, Synod declared not only against the creation of too many new offices, but also against undue timidity of creating new offices when they become necessary for the welfare of the Church.

Forestalling Free Action of Synod.

(Germ. Rep., p. 144.)

The petition for a "final definition of Synod's policy in matters forestalling free action of Synod" was answered as follows: —

"Though Synod does not wish to dampen the laudable zeal of various boards and individuals gathering contributions from congregations and individuals for synodical institutions, but would rather embrace this opportunity of thanking the generous donors as well as those who have taken the pains of collecting funds for Synod, yet there is no doubt that 'self-constituted bodies and boards acting beyond the authority vested in them' have no right to organize donation campaigns. We desire, however, to state that no such cases have been proved, nor such as 'forestall the free action of Synod.'"

English Language the Official Language of Synod.

(Germ. Rep., p. 141.)

In a memorial the request was made that English be made the official language of Synod. Synod's reply was that the time for such action had not yet come. For the present our congregations should be satisfied if all Districts, like the General Body, grant the right to use both languages on the floor of synod.

Constitutional Matters Pertaining to Individual Districts.

Division of the Kansas District.

(Germ. Rep., p. 143.)

Synod granted the petition of the Oklahoma Pastoral Conference and the Kansas District for division and the formation of an Oklahoma District.

Canada District Renamed.

(Germ. Rep., p. 143.)

The Canada District was granted permission to assume the name of Ontario District, there being now several Districts in Canada.

Amalgamation of the English District.

(Germ. Rep., p. 136.)

In view of the fact that the English language is rapidly becoming the dominant language in all Districts, so that the present arrangement of an English District scattered over all parts of our vast country in the midst of all other Districts is no longer necessary, and since greater efficiency and harmony could thereby be attained in Synod's great work, the visitors of the Western District petitioned

Synod to take such steps as would "effect the amalgamation of all congregations now belonging to the English District with the respective Districts in the territory in which they are located."

Hereupon Synod passed the following resolution:—

"Since all Districts of Synod are becoming more and more English in their work, we do not deem it wise to reject said memorial outright, but believe this proposal should come from the English District and therefore ask it kindly to discuss this matter.

On Dismissing Congregations to the English District.

(Germ. Rep., p. 137.)

The question, "What shall in future be our practise in dismissing congregations to the English District?" was answered as follows:—

We still hold that congregations in our midst which have become purely English ought to retain their synodical connection and advise them to do so. However, if they persist in their preference of joining the English District, the final decision rests with themselves.

Professors in the English District.

(Germ. Rep., p. 144.)

On recommendation of the committee, Synod declared its opinion to be that pastors of the English District working as professors at our institutions should ordinarily be members of a congregation of the English District if they desire to remain members of the English District, and *vice versa*.

Incorporation of the Synodical Conference.

(Germ. Rep., p. 146.)

Synod expressed its assent to the incorporation of the Synodical Conference.

ELEMENTARY CHRISTIAN EDUCATION.

Report of the School Board.

(June, 1920, to June, 1923. Abridged.)

Moved by the danger which threatened our parochial schools from without and within, Synod in Detroit empowered the School Board to call an Executive Secretary. Approximately 36 meetings were held, exclusive of joint meetings with other boards and committees. The office of the Executive Secretary was located at Indianapolis, Ind. The business of the board was such that the Executive Secretary had

to engage a stenographer. Following is a brief summary of the board's business:—

1. A gratifying cooperation of the District school boards and of these with the General Board has been brought about. Two conferences of representatives of the District boards have been held: a third is planned during synod. As a result our Synod more than ever stands united as one man in the effort of preserving our parish-schools and raising them to an ever higher level.

2. Statistics have been gathered on the educational system of our congregations, embracing parish-schools, Sunday-schools, vacation-schools, *Christenlehre*, confirmation instruction, language used, and the number of teachers engaged. These statistics have been sent to the District boards, the visitors, and the official statistician.

3. The office rendered repeated assistance to District officials, congregations, and individuals in finding teachers and regaining such as had abandoned the work for one reason or another.

4. School tracts have been published and spread in large quantities.

5. At the beginning of the present year a News Service was instituted, which issued regular monthly bulletins to all visitors' circuits, District school boards, District officials, officials of Synod, editors of synodical, District, and parish-papers, as well as of other publications in our circles. In special cases supplementary reports are issued. This arrangement serves also to keep the General School Board posted, since reports are received from all parts of Synod.

6. In the defense of our schools the board made it a business to follow the various movements of the enemy and to warn the brethren of impending dangers. To this end, tracts were prepared and distributed. Such service was rendered the District boards in this matter as was requested by them. While remaining in touch with the matter, the Board, however, did not deem it necessary to duplicate the work of the American Luther League. The danger is still threatening from various quarters, and the board is endeavoring to meet it and to provide means of defense.

A Legal Advisory Committee of lawyers from our circles was appointed. This committee renders the board free service in all legal questions. For these services, frequently of a very difficult nature, it deserves Synod's thanks.

7. On order and under the control of the School Board, a number of school-texts and technical works for the teachers have been prepared. The Executive Secretary assisted in the preparation of a Teachers' Manual for the Central District.

8. The Executive Secretary also published a series of articles on Christian education for our synodical organs, delivered a number of

lectures, attended thirteen District synods, twenty larger conferences, and three meetings of the Survey Committee, frequently conferred with the school superintendents, and attended various committee meetings and one meeting of Sunday-school workers, as well as two meetings of the Religious Education Association.

9. A collection of photographs and specifications of school-buildings recently erected in our Synod has been made for the benefit of congregations planning to build schools.

10. In short, a school center has been created in order to render possible and promote cooperation on the part of all Districts. Here all efforts of the various Districts are to converge, and from it all important matters may again be sent on to the Districts.

The board also presented five recommendations. These, together with the recommendations contained in a number of memorials, were summarized in the following recommendations of the committee in charge of Christian educational matters and *adopted* by Synod:—

1. That, whereas our posterity is for the greater part being brought up, not in the parochial school, but in the public school, Synod inquire of all Districts about the status of Christian education of children. Congregations so situated as to be unable to erect parish-schools would thereby be freed from the suspicion of not doing their duty, while others would be unequivocally admonished.

2. That all officials and especially visitors be requested earnestly to labor for the erection of parochial schools wherever such ought to exist.

3. That all pastors, teachers, and congregations be requested to take the education of their young in the home and the school seriously and not to neglect family devotions.

4. That by means of our educational institutions and by means of sermons Synod work more intensely for the proper education of the young.

5. That a well-regulated visitation of schools be undertaken.

6. That Synod, by resolution, emphasize the great importance of Christian home education.

7. That our officials and institutions strive to build up the Christian home and to bring about better Christian home discipline.

8. That congregations and conferences devote more time to the discussion of this important matter.

9. That a greater supply of pertinent literature be provided for, and that the School Board be given adequate funds for distributing appropriate tracts.

10. That appropriate schoolbooks, *e. g.*, readers, be published in addition to the religious books, even if only a small profit is realized.

11. That our schools be made as efficient as possible according to the requirements of the State; that good, practical, and sanitary buildings be provided for our children; that all cooperate when legislatures deliberate upon measures inimical to our parochial schools; that a Legislative Committee be appointed for each State where such a committee does not yet exist.

12. That the faculties of our theological seminaries not only equip their graduates to teach a school of eight grades, but also inculcate upon them the duty of organizing parochial schools as soon as possible and, if necessary, teaching school themselves as demanded by Synod's constitution.

13. That pastors and congregations, when received into synodical membership, be reminded of the fact that it is a condition of membership that they organize schools as soon as possible.

14. That visitors inspect schools and urge congregations without schools to organize them as soon as possible; that District presidents, in their presidential reports, state the number of pastors teaching school, the number of months taught, the number of children attending parochial schools, the number attending public schools, and the number of pastors not teaching school.

15. That the District pastoral conferences see to it that all their pastors teach school if necessary.

16. That congregations extending calls be advised to obligate the pastor to begin a parochial school as soon as possible, even with a few children, and to teach as many days as are taught in the public schools.

17. That school boards and mission boards be encouraged to subsidize congregations desiring to maintain a school, but unable to do so.

18. That all pastors be obligated to report for the *Statistical Year-Book* how many months a year school is conducted, and how many children attend the parochial and how many the public school.

19. That in view of the divinely ordained duty of the Church and of parents to the children and in view of the great and manifold dangers actually threatening our schools, Synod, by resolution, adopt the recommendation to request all officials and members to advocate with renewed diligence and vigor the introduction and maintenance of parochial schools in German and English congregations; that the lofty purpose and great value of parochial schools be impressed again and again upon the students at our seminaries; that the students at our seminaries be given a course of instruction in the art of teaching and be filled with enthusiasm for it.

Executive Secretary of the School Board.

(Germ. Rep., p. 155.)

The Pastoral Conference of the Northern Illinois District petitioned Synod to abolish the office of Executive Secretary and to allot the various functions of this office to other officials.

The committee reported that the board declared it was unable to function properly without this office, and that the teachers attending synod had unanimously endorsed the office as necessary for our schools. Hereupon Synod resolved to continue the office. Opportunity was given a member of the board to explain the manner in which the appropriation of \$5,000 was spent.

Supreme Court Decision on the Language Question.

(Germ. Rep., p. 155.)

In view of the recent victory gained by our schools in the Supreme Court, Synod resolved to humble itself before God, to express its gratefulness by an increased zeal for parochial schools, and by recommending special services of penitence and thanksgiving in order to fan anew the love for our parish-schools and make our people more willing to promote their welfare.

Meeting of the General School Conference.

(Germ. Rep., p. 155.)

Synod authorized a triennial meeting of the General School Conference composed of the District School Boards.

Sterling-Towner Bill.

(Germ. Rep., p. 158.)

The President was ordered to appoint a committee to draw up resolutions protesting against the Sterling-Towner Bill and to send them to the proper persons. These resolutions are to be disseminated through the District presidents.

Sunday-Schools.

(Germ. Rep., p. 156.)

The report on the activities of the Sunday-school Board showed that the board had gathered Sunday-school statistics, recast and augmented the Concordia Publishing House Sunday-school literature, and had labored to have sound Lutheran literature introduced into all our Sunday-schools.

ACTION.

Synod resolved to create a permanent Sunday-school Board, which is to assist congregations in preserving and improving our Sunday-schools in a truly Lutheran spirit. This board was charged

to provide for the publication of the necessary lessons and pertinent literature in general, and to see to it that our Publishing House offer appropriate Sunday-school supplies. The present arrangement of engaging an editor for the Sunday-school literature was sanctioned. Synod, however, rejected the proposal of having the editor of our Sunday-school literature devote his entire time to that work.

It is not deemed wise to amalgamate the Sunday-school Board with the General School Board. Joint meetings of the two boards were recommended for the purpose of discussing plans and bringing about cooperation in the manner of carrying them out. The President of Synod is to be an *ex officio* member of this joint meeting, as well as representatives of the four seminaries.

JUVENILE MATTERS.

Young People's Work.

In this matter Synod passed the following resolutions:—

1. We fear that in our circles not enough work has been done among our confirmed youth and, when carried on, has frequently been done unsystematically, with little definite aim, and with but insufficient energy. Where, for example, young people's societies were organized, these often were of short duration or frequently degenerated into mere societies for entertainment. The young people were not really familiarized with the Bible and were not systematically encouraged and educated to take an active part in the work of the Lord and to offer and give active service.

2. We recommend that sound helps be provided for work among our young Christians, especially for promoting Bible knowledge. We would advise the Board for Young People's Work to acquaint itself with the entire work of the Walther League and repeatedly to report on it in our church-papers.

3. We call attention to the fact that in young people's societies entertainment is easily overstressed while church history and church work are not sufficiently emphasized; that entertainments may degenerate and be carried on in a worldly spirit. At times no real cooperation exists between the pastor and the society.

4. Young people's societies and organizations of such are to be told that they must not of their own accord take up any work that encroaches upon the rights and privileges of congregations or synods. If properly aroused, much desire for work will show itself among our young people, and they are able to render great help. But they must remember that they are merely to assist, not to rule.

5. The Board for Young People's Work is to be continued.

6. Synod encouraged the Board to remain in close touch with the Walther League and to this end approved the following agreement made between the officials of the Walther League and Synod's Board April 30, 1923:—

a) That there be mutual cooperation between Synod's [Missouri] official Board for Young People's Work and representatives of the Walther League. This is to be brought about by joint meetings and exchange of reports of the committees on the activities in the interest of young people's work.

b) All larger matters pertaining to young people's work and affecting the congregations of Synod shall be undertaken only after the approval of the Board for Young People's Work has been obtained.

7. Synod endorsed the following guiding principles for young people's work:—

a) That the Bible be studied more by our young people. We therefore urge that every young people's society be a Bible society.

b) That particular stress be laid upon educational work among our young people in order that in future our Church may have well-informed and intelligent workers.

c) That the congregations provide libraries for their young people, selecting books recommended by our Publishing House. We feel that in this way the reading of our young people will receive the proper supervision.

d) That young people's societies of our Districts be advised to affiliate with the Walther League, since the things mentioned are fostered most effectively by the Walther League.

e) That congregations having no young people's societies be advised to organize their young people.

f) That congregations organizing their young people be advised to cooperate with the Walther League.

Juvenile Literature Board.

It is the business of the Juvenile Literature Board to examine the literature adapted for young people in German and English in order to sift the good from the bad and so assist the Church in watching over the reading of its young people. To date this board has read 2,071 books and booklets, of which 744 were found unfit. 672 titles are recorded in the present catalog of Concordia Publishing House. The books have been grouped into three classes: Fiction and General Literature (527 titles); Natural History, Anthropology, and Travels (72 titles); Biography and History (73 titles). The number of titles given under the last two groups is small because in this class of lit-

erature many expressions are found that are not in agreement with the Christian religion and militate against Christian morals. The above titles have also been grouped into five libraries, each of which contains reading-material for children of various ages. Special thanks are due to Prof. Th. Graebner, who rendered valuable services as an advisory member.

ACTION.

Synod acknowledged the faithful services of the Juvenile Literature Board and passed a resolution of thanks.

PUBLICATION MATTERS

Concordia Publishing House. Publications.

(Germ. Rep., p. 164.)

Literary Board.—Synod resolved that the Manager of Concordia Publishing House is not to be a member of the Literary Board, but be obligated to attend the sessions as an advisory member.

Concordia Triglotta and Popular Commentary.—Synod resolved to urge both congregations and pastors to purchase and to use the *Concordia Triglotta* and Dr. Kretzmann's *Popular Commentary of the Bible*.

Concordia Home and Teachers' Bible.—This work contains the text of the King James Version. The customary Bible helps have been thoroughly revised by Prof. Th. Graebner in the Lutheran spirit. Synod recommended that all our congregations, pastors, and teachers purchase and use this our edition of the English Bible.

Other Publications.—A total of 78 publications appeared from the Concordia Publishing House press during the past three years, 55 in English, 23 in German. Synod expressed its appreciation and gratitude to the Board of Directors and the managers for the industry, prudence, and foresight evinced in these publications.

Addition to the Publishing House.—Synod repeated the resolution passed three years ago that an addition be built to the Publishing House. It authorized and empowered the Board of Directors of Concordia Publishing House to provide as much space in the projected addition as Synod's Board of Directors deems necessary for synodical purposes, as provided for in the resolution of Synod. (*Synodalbericht* 1920, p. 176.)

Competition of Other Publishers.—Resolved earnestly to request all members of Synod to purchase the publications of our own Publishing House, whenever possible, in preference to those of other houses.

*Financial Report.**Result of Business, 1920—1923*

Capital and Surplus, May 1, 1920		\$ 706066.86
Dividends	\$ 265000.00	
Gain, 1920—1923		521989.73
Net Worth, April 30, 1923	963056.59	
	\$1228056.59	\$1228056.59

Schedule of Present Worth

Cash	\$ 8135.59
Merchandise Inventory	522629.84
Plant	206170.02
Investments	258200.00
	\$995135.45
Less Accounts	32078.86
	\$963056.59

Having been properly audited, this financial report was adopted.

Cash-in-Advance System.—After a careful and thorough consideration of this matter the committee in charge of the Publishing House report stated that it was convinced the cash-in-advance system had not resulted in any loss of subscribers or money, but rather in a distinct gain, and that to return to the former system would involve great expenditure for the necessary equipment and the employment of additional clerks. Synod therefore resolved that the cash-in-advance system be continued.

"Homiletic Magazine" and "School Journal."—Synod by resolution declared these periodicals to be the property of Synod and furthermore stated that the Publishing House has no authority to discontinue any synodical publication unless expressly empowered to do so by Synod.

Synodical Reports. Doctrinal Essays.—Synod resolved to request the Ven. President to submit this matter to each District of Synod for mature deliberation and to report to the General Body, whereupon Synod would decide upon, and regulate, this matter.

Death of Teacher G. H. Runge and Retirement of Mr. C. Schroeter.—A resolution was passed recognizing, and expressing its appreciation of, the faithful services rendered by these former members of the Board of Directors.

Hymn-book with Tunes.—Requests had come in for a cheap edition of the standard English Hymn-book with Tunes. Synod resolved that the Publishing House be requested materially to reduce the present price of this book.

Intersynodical Hymnal.—A request had been made to Synod to join other Lutheran synods not in doctrinal unity with us in publishing an English hymn-book that might be used by all these bodies. Synod passed the following resolution: "We cannot participate in this undertaking because, among other reasons, our present hymnal is so firmly established in our congregations that we cannot introduce a new one at this time."

Literary Board.—Synod resolved to request the Literary Board to scan old synodical reports and reproduce in English such reports as are of great merit.

Publication of a United States History.—Since 1890 Synod passed resolutions at eight different sessions to publish such a history, but the resolutions were never carried out. This seems to show that the project is not feasible. There is good reason to believe that a history of the United States that will approximately meet our requirements will soon be on the market. It was therefore resolved that the General School Board be requested by Synod to scan the market and recommend a suitable United States History.

English Readers for Our Parochial Schools.—Publication of a new series of English readers was requested. Resolved that the General School Board select a suitable series of readers now on the market and have it so amended, revised, and edited that it will meet our peculiar requirements.

English History of the Lutheran Church in America.—The question of publishing such a work was referred to the Literary Board for immediate action.

German Grammar.—Synod instructed Concordia Publishing House to publish a short German grammar containing the principal rules of German grammar and the necessary exercises.

Amalgamation of "Lutheran Witness," "Walther League Messenger," and "Concordia Junior Messenger."—Resolved to take no action in this matter at the present time, 1. because not all these periodicals are publications of Synod, 2. because they serve their own peculiar interests.

Enlargement of Our Official Organs.—Instead of enlarging the *Lutheraner* and the *Witness*, Synod instructed Concordia Publishing House to provide additional space in the *Lutheraner* and the *Lutheran Witness* for missionary reports and other suitable reading-matter in simple language for the young and rather to discontinue the publication of detailed acknowledgments of the District and other treasurers.

Bible Revision.—Synod was requested to provide for a Lutheran revision of the English Bible. Synod recommended that Rev. H. J. Stechholz submit this matter to the faculty of Concordia Seminary, St. Louis.

SUPPORT AND RELIEF.

Support of Incapacitated Servants of the Church and Their Dependents.

(Germ. Rep., p. 178.)

The Board of Support reported that pursuant to Synod's resolution the average support granted per person, man, woman, or child, had been increased from \$8.50 per month in 1918 to \$15.03 per month in 1922. The number of beneficiaries increased from 750 to almost 1,100; the expenses, from \$75,000 to \$164,000. Additional increases were granted for the present year, so that the total will probably amount to \$190,000 or \$200,000. The income from the L. L. L. fund alone has made this support possible, the congregations in 1922 contributing only \$59,658.96.

ACTION.

Synod resolved —

1. To reconsider the motion passed in 1920 fixing the quota of this treasury at 20 cents per communicant member and have the Board of Directors fix the annual budget as prescribed by the constitution.
2. To grant the request of the Board of Support to add at least a part of any annual surplus to the Support Fund.
3. As to inaugurating a pension plan, to adopt the resolution of the English District: "*Resolved*, That we deem it advisable to have the question discussed at all District conventions, and eventually at the sessions of Delegate Synod, as to whether it would serve the best interests of the Church and the servants of the Word if we would grant all Veterans of the Cross who have attained the age of sixty-eight years and who have rendered the Church services for a certain number of years, a moderate annual sum as an honorarium, without obliging them to answer any questionnaire." As a basis for this discussion, Synod adopted the theses drawn up by the Conference on Support. Meanwhile those who need it are to receive support according to the old plan, if possible, however, more than heretofore.
4. To declare its readiness to grant aid from the Treasury of Support to servants of the Church who are in the service of charitable, educational, and missionary organizations of our Synod and belong to a District of Synod, as well as to Synod's missionaries, pastors, professors, and teachers at home and abroad, and their dependents and survivors.
5. To inform the Synodical Conference of its readiness to grant aid to all negro missionaries who are members of one of its Districts, and to their dependents.

NOTE. — Charitable, missionary, and educational societies shall be obliged to pay an annual contribution of \$50 for each servant of the Word in their service, provided he is a member of a synodical District.

6. To state with reference to the annual deficit of the *School Journal* that money contributed for support is not to be used to maintain a professional magazine, irrespective of its importance.

7. In order to enable the Board of Support to secure exact information about the applicants for support, which in the last analysis can be obtained only from the District presidents, to instruct these, when reporting resignations, to state also whether the person in question is eligible to a call or not, and to provide *emeriti* who move to another District with a transfer for admission to the District.

8. To encourage the Board to take such steps as will increase the number of annuity bonds issued.

9. To thank the servants of the Word for their personal contributions, which have become quite numerous, and to urge them kindly to continue these contributions.

Report of the L. L. L. Endowment Fund.

(Germ. Rep., p. 187.)

Synod adopted the following report of the L. L. L. Endowment Fund: —

At the synod in Detroit in 1920 the L. L. L. turned over to Synod a total of \$2,050,095.25, which was established as the L. L. L. Endowment Fund.

This fund now amounts to \$2,050,366.20, showing an increase of \$270.95. The increase was caused by the sale of some bonds and purchase of other bonds for a somewhat smaller price.

Nearly all of this fund is invested in registered United States Liberty Bonds, and these bonds are kept in a fire-proof and police-protected vault in the National Safe Deposit Co. (formerly Fort Dearborn) in Chicago, and the box containing these bonds cannot be opened except in the presence of the treasurer of these funds and one witness, either President Pfotenhauer or Fred C. Pritzlaff.

The treasurer has given assurity bond by a surety bond company.

The interest received on this fund during the years 1920, 1921, and 1922 amounted to \$206,754.88. Of this amount \$205,510.43 was turned over to Edmund Seuel, the General Treasurer of Synod, for the benefit of the Board of Support.

\$171.65 was expended for the safety-deposit box and surety bond. The balance, amounting to \$1072.80, was in the bank.

The books were audited by certified public accountants (Smart Gore & Co. of Chicago), which audit was accepted by your Board of Auditors, who in the presence of President F. Pfothner on January 31, 1923, personally counted all the securities and made their report in the *Lutheran Witness* on February 27, 1923, and in the *Lutheraner* on February 20, 1923, as follows:—

"The undersigned members of the General Auditing Board, with the Hon. President F. Pfothner, on January 31 inspected these securities representing the investments of the fund at the Fort Dearborn vaults, Chicago, Ill., and found that the amounts stated in the balance sheet are in agreement with the securities deposited for safe-keeping in these vaults.

"WILLIAM SCHLAKE. } General Board
"FRED H. WOLFF. } of Auditors.
"F. PFOTHNER, President."

Addition to the L. L. L. Endowment Fund.

(Germ. Rep., p. 185.)

The president of the Lutheran Laymen's League, Mr. Theo. H. Lamprecht, announced that the officers of the League were ready to turn over to Synod the sum of \$250,000 to be added to the Endowment Fund for our Veterans of the Cross, with the same conditions and subject to the same rules under which the \$2,050,000—in round figures—was turned over at Detroit and accepted by Synod. He also stated that the League proposed to continue its work until, with the help of God, its goal of \$3,000,000 shall have been reached. Mr. Fred C. Pritzlaff, treasurer of the League, thereupon read the document of transfer.

Synod accepted the tender of \$250,000 with thanks, acknowledged the zeal of the league by rising, and wished the league God's blessing in reaching the goal of \$3,000,000.

General Relief Board.

(Germ. Rep., p. 188.)

In view of the fact that the Board of Support was separated from the General Relief Board, the rules and regulations under which this Board formerly operated were no longer clear in all points. Synod therefore adopted a new set of regulations for the General Relief Board.

FINANCIAL MATTERS.

Triennial Report of the Treasurer of Synod for the Years 1920—1922.

GENERAL SURVEY OF RECEIPTS.

Districts	1. Totals	2. Budget Treasury	3. Synodical Treasury	4. Building Fund	5. St. Louis Seminary	6. Home Missions	7. Foreign Missions
1. Atlantic.....	141763 63	153 20	24049 69	17395 58	33104 16	8066 92	9094 52
2. California and Nevada.....	43200 22	8566 00	3708 57	10534 49	6018 38	1382 56	1306 99
3. Canada.....	32702 73	8397 92	3503 28	10619 73	1459 98	1648 26
4. Central.....	464139 49	3661 27	103456 36	10553 26	129355 52	39789 91	29516 13
5. Central Illinois.....	173433 97	13215 97	28724 31	48036 97	11068 99	12793 55
6. Eastern.....	143651 12	2715 66	28642 51	8554 75	9214 00	11807 44
7. English.....	121274 50	14984 01	20413 63	32023 09	16047 70	4634 26	7597 09
8. Iowa.....	202832 35	45716 88	21071 98	57553 63	25000 00	11384 13	11822 84
9. Kansas.....	101141 35	543 19	16694 95	31594 22	70 00	4284 49	9420 17
10. Michigan.....	314916 43	3606 87	65935 18	91494 81	9200 19	22275 57	26310 69
11. Minnesota.....	146210 34	2298 85	28105 99	39640 62	35 00	2726 03	14971 31
12. Nebraska.....	165446 88	25909 00	2567 19	48763 70	8018 26	13979 97
13. North Dakota and Montana.....	11901 16	43 25	1856 71	1430 87	581 06	800 28	1236 44
14. Northern Illinois.....	346851 69	5785 66	62403 44	110576 69	23996 02	22632 41
15. North Wisconsin.....	85230 14	15410 91	34411 00	3392 50	5215 95
16. Oregon and Washington.....	17658 78	726 50	1890 70	3441 05	1615 54	704 16	2376 33
17. South Dakota.....	40738 66	4244 62	4315 00	14355 52	2602 00	1890 10
18. Southern.....	13173 85	1567 18	1698 48	3269 68	2610 24	688 31
19. Southern Illinois.....	120912 08	1588 18	23238 49	32434 23	2152 08	9142 32	9379 68
20. Texas.....	41823 95	5947 52	9863 59	1089 43	2902 75
21. Western.....	285263 61	6142 30	49460 68	55866 55	39927 83	15997 71	21277 92
22. North Wisconsin.....	209476 22	2221 06	38626 72	65012 16	17984 02	16270 01
23. Colorado.....	4619 10	72 21	872 56	1027 79	248 87	173 03	239 78
24. Alberta and Brit. Columbia.....	3223 97	176 20	620 56	42 66	86 90
25. Direct to Treasurer.....	2517631 96	23 03	440092 99	4847 82	4005 09	27894 06	69900 00
Totals.....	5748718 18	126473 81	1016095 85	698935 85	332869 21	228133 29	304563 54

* Receipts for 1922 only. Prior remittances credited respectively to the Kansas and Minnesota Districts.

Districts	8. Mountain Retreat	9. S'dry Titt. For. Mis.	10. S. American Missions	11. Deaf-mute Missions	12. Indian Mission	13. Ind. Bldg.	14. Jewish Mission	15. For-tong. Missions
1. Atlantic.....	279 20	2231 41	3756 43	1069 48	1050 61	129 33	68 49	1086 03
3. California and Nevada.....	180 05	188 40	598 17	245 63	312 74	5 45	45 62	190 86
4. Canada.....	112 28	570 48	179 24	101 40	120 00	81 12
5. Central.....	1061 35	5136 01	20112 02	4680 45	2891 25	13 00	304 38	3554 88
6. Central Illinois.....	493 81	1135 03	6218 55	2167 17	2425 61	150 00	518 99	1644 19
7. Eastern.....	715 91	1827 75	5123 64	1028 32	1237 30	357 73	259 74	1402 38
8. English.....	487 75	2523 19	2031 08	1197 70	805 33	182 61	235 49	495 47
9. Iowa.....	549 61	2044 92	7033 21	1883 42	2177 51	343 97	525 25	1566 66
10. Kansas.....	197 50	949 24	3625 80	1622 79	1346 06	349 10	331 09	912 41
11. Michigan.....	624 86	1910 04	12517 41	2609 59	2852 53	276 20	522 29	2331 05
12. Minnesota.....	417 10	908 38	5871 71	3813 09	2791 28	473 40	1367 64
13. Nebraska.....	601 20	671 02	6051 85	2397 58	1428 88	817 47	515 55	1578 30
14. North Dakota and Montana.....	2 00	37 82	424 27	251 07	181 27	46 67	67 62	137 65
15. Northern Illinois.....	721 47	1023 84	15155 99	4695 05	4193 40	247 00	826 52	2448 37
16. North Wisconsin.....	122 15	527 11	2802 85	677 40	1683 10	873 03	37 95	399 70
17. Oregon and Washington.....	66 50	48 55	294 10	328 64	76 42	22 40	4 50	51 47
18. South Dakota.....	65 00	345 50	327 43	127 85	12 80	152 94
19. Southern.....	69 00	110 18	212 69	112 05	49 93	8 09	20 34
20. Southern Illinois.....	351 50	822 60	4972 15	1306 91	1221 80	104 48	359 60	914 32
21. Texas.....	176 92	338 31	897 56	364 47	302 68	61 50	279 57
22. Western.....	1302 01	3489 03	11857 67	3543 34	2547 66	445 24	590 96	2132 87
23. South Wisconsin.....	541 45	461 57	8139 88	2512 39	3297 11	2697 22	485 25	1940 12
24. Colorado *.....	10 00	74 77	14 75	12 32	11 72
25. Alberta and Brit. Columbia *.....	14132 75	47572 21	13968 94	6369 91	3968 41	5816 99	502 50	2741 82
26. Direct to Treasurer.....	23104 09	74733 59	132666 40	44001 79	36885 31	12997 89	6757 58	27444 33
Totals.....								

* See footnote on p. 59.

Districts	16. Immigr. & Seam. Mis.	17. European Missions	18. European Relief	19. Sundry Titt. Europ. Relief	20. Negro Missions	21. S'dry Titt. Negro Mis.	22. Miscal. Missions
1. Atlantic.....	667 66	1093 96	11675 49	105 00	7108 28	1316 10
3. California and Nevada.....	97 17	139 13	1777 87	883 54	717 13	788 57
4. Canada.....	36 24	101 40	1000 00	98 50	1726 14	70 15
5. Central.....	169 32	4520 96	24022 03	4590 16	16051 41	4091 01
6. Central Illinois.....	615 84	1937 19	5502 13	3364 20	10339 50	1792 92
7. Eastern.....	361 26	1173 14	8024 58	1973 34	5191 64	650 26	26 71
8. English.....	226 16	610 86	759 89	404 42	1819 26	559 91
9. Iowa.....	554 55	2709 66	6432 85	30 17	3894 42	1652 18
10. Kansas.....	364 30	1441 88	10881 55	1041 04	2513 08	2944 12
11. Michigan.....	588 78	3457 22	18500 96	8231 54	12459 27	1020 26
12. Minnesota.....	234 46	2076 09	4778 86	157 90	6745 15	2758 27
13. Nebraska.....	901 72	1624 40	15661 03	80 91	6615 42	1964 61
14. North Dakota and Montana.....	5 36	154 02	1623 54	65 95	472 91	23 10
15. Northern Illinois.....	762 00	4343 21	18904 38	3919 63	11776 10	3283 97
16. North Wisconsin.....	64 10	204 00	8593 56	373 29	1466 25	730 69
17. Oregon and Washington.....	5 00	57 43	2821 99	377 29	345 85	256 92
18. South Dakota.....	41 86	97 55	3258 28	252 02	1366 50	299 77	434 00
19. Southern.....	1 50	39 34	698 22	67 00	308 86	74 95
20. Southern Illinois.....	267 25	1405 40	7483 68	299 50	4728 04	1138 05	3559 67
21. Texas.....	86 53	304 34	775 93	2097 68	282 02	282 02
22. Western.....	843 56	2533 86	15564 31	3599 53	8786 09	1975 41	1188 28
23. South Wisconsin.....	657 42	2634 89	9479 07	2156 23	3189 41	2485 31	3090 31
24. Colorado *.....	6 40	65 64	101 26	235 99	100 00
25. Alberta and Brit. Columbia *.....	1 12	3 06	50 00	72 29
26. Direct to Treasurer.....	1086 98	5707 69	14373 76	1286 62	24027 30	2238 85	448 03
Totals.....	8646 54	38607 32	195963 98	34286 87	133051 97	33098 00	8747 00

* See footnote on p. 59.

Districts	23. Church Extension	24. Synodical Jubilee	25. Board of Support	26. Pension Fund	27. General Relief	28. S'dry Tit. Relief	29. Thank-Offering	30. Sundry Accounts
1. Atlantic.	1288 93	4982 44	10060 06	...	108 02	722 64
3. California and Nevada.	...	2139 26	2401 78	...	67 97	45 37	457 77	400 75
4. Canada.	2356 88	...	33 84	37 00	51 43	199 46
5. Central.	724 35	11430 83	32877 39	1300 09	...	91 40	2847 26	7537 49
6. Central Illinois.	41 00	6257 85	12010 38	...	169 57	202 93	1601 75	1005 57
7. Eastern.	1087 73	1279 27	11933 59	487 98	507 59	426 31	161 85	1064 89
8. English.	114 13	3364 73	7769 10	36 00	184 63	207 59	846 97	712 85
9. Iowa.	1031 30	4804 67	10891 44	968 99	111 41	228 39	460 00	2598 31
10. Kansas.	27 01	243 06	8649 15	23 00	103 15	968 10
11. Michigan.	66 25	3028 70	22731 90	528 15	213 14	156 00	...	868 98
12. Minnesota.	...	7345 38	14528 37	1616 58	102 07	471 58	...	2975 23
13. Nebraska.	...	9959 92	14392 07	250 00	338 95	72 62	...	285 26
14. North Dakota and Montana.	269 10	340 42	1807 32	210 00	12 13	36 62	...	52 81
15. Northern Illinois.	47 45	11229 84	27209 99	2322 05	222 36	15 25	4261 45	2836 50
16. North Wisconsin.	58 95	1860 11	4048 20	934 65	46 00	1408 19
17. Oregon and Washington.	...	970 38	561 33	...	6 25	449 03
18. South Dakota.	...	746 08	3819 00	1692 84
19. Southern.	210 97	820 37	481 16	128 31	...	12 00	...	19 00
20. Southern Illinois.	38 64	3862 57	7439 45	137 50	165 32	488 43	288 07	1421 77
21. Texas.	148 94	1475 45	4380 95	566 64	20 66	38 65	...	4904 91
22. Western.	2094 85	7002 74	17900 88	791 36	459 22	593 69	3586 32	3711 74
23. South Wisconsin.	21 00	6050 45	13934 86	1257 10	121 64	...	2422 78	1786 79
24. Colorado.	198 08	339 05	156 51	...	1 82	...	50 55	6 00
25. Alberta and Brit. Columbia.	5 95	361 54	63 16	12 50	1709 52
26. Direct to Treasurer.	251788 47	2362 42	258611 39	...	3386 58	73 78	32 00	1310671 57
Totals	259263 10	92255 53	491016 31	11549 90	6382 32	3208 61	16918 70	1350000 20

* See footnote on p. 59.

1. Cash Account.

Balance, December 31, 1919	\$ 56260.30
Total receipts	5748718.18
Total disbursements	\$5804978.48
Balance, December 30, 1922	\$94413.37

2. Budget Treasury.

Receipts, 1922	\$126473.81
Disbursed, prorated according to budget, to —	
Synodical Treasury	\$54874.46
Home Missions	14965.65
Foreign Missions	15677.68
South American Missions	5701.43
European Missions	2137.41
Deaf-mute Missions	2850.73
Indian Mission	2137.41
Foreign-tongue Missions	1709.93
Immigrant and Seamen's Missions	763.91
Negro Missions	14252.32
Board of Support	10689.56
General Relief	713.32
	\$126473.81

3. Synodical Treasury.

DISBURSEMENTS.

INSTITUTIONS	Salaries	Current Expenses	Libs. and Lab's	Totals
Bronxville	47899 52	19911 38	650 00	68460 90
Concordia	44761 50	16246 24	650 00	61657 74
Conover	17777 60	1485 50	100 00	19363 10
Edmonton	4532 00	4508 20	50 00	9090 20
Fort Wayne	78492 27	33743 81	650 00	112886 08
Milwaukee	55147 30	13794 41	650 00	69591 71
Oakland	20505 00	476 09	150 00	21131 09
Portland	12381 33	357 33	150 00	12888 66
Porto Alegre	20700 00	...	250 00	20950 00
River Forest	69514 67	31778 87	650 00	101943 54
St. Louis	96638 76	20382 39	950 00	117971 15
St. Paul	54386 83	21021 75	650 00	76058 58
Seward	57637 35	20897 48	650 00	79184 83
Springfield	40603 00	17760 54	600 00	58963 54
Winfield	51526 04	10634 28	650 00	62810 32
	672503 17	212998 27	7450 00	892951 44
Officers, including office help			21185 00	
Financial Secretary's office			16548 81	
Office expenses			3316 54	
Mileage			3891 76	
Exchange			38 82	
Expense of appraisal			144 74	
Legal expenses			138 35	
Printing			12017 76	
Periodicals sent gratis			131 38	
Washington office			384 74	
School Board			8968 24	
Sunday-school Committee			175 01	

Survey Committee	328 79
Board of Directors	4125 39
Board of Support, 10% of Concordia Publishing House dividends, 1919-1921	71393
Building Fund transfer	30000
Total disbursements	105
Deficit, December 31, 1919	994450 76
	42726
	1037177 28

RECEIPTS.

Receipts as per Col. 3	1016095 85
Tuition	11348 88
Rent in Winfield	300 00
For Norwegian professor at St. Paul	2150 00
Less 2 refunds in 1920	1029894 73
Total receipts	3711 17
Deficit, December 30, 1922	1026183 56
	10993 83

4. Building Fund.

New building at Concordia	\$12772.69
Less debit balance, Building Fund	\$ 14.74
Less debit balance, Springfield Hospital	5383.00
Balance, December 31, 1919	5397.74
	\$ 7374.95

RECEIPTS.

Building Fund	\$698935.85
Building Fund, transferred	901.94
Concordia	242.89
Edmonton	1389.52
Porto Alegre	36.75
River Forest	30.12
St. Louis Seminary	332869.21
St. Louis Seminary, transferred	150.00
Springfield Hospital, transferred	5383.00
Seward, dormitory	55.00
	1039994.28
	\$1047369.23

DISBURSEMENTS.

Building Fund	\$198863.60
Bronxville boiler house (on account)	20000.00
Concordia, transferred	387.50
Porto Alegre, new seminary	35015.70
Porto Alegre, new residence	100.00
Publicity Committee	6884.62
River Forest	28800.00
St. Louis Seminary	14289.99
St. Paul, residence	8247.75
Seward, dormitory; transferred	55.00
Winfield, residences	26435.43
	339079.59
Balance, December 30, 1922	\$708289.64

PRESENT BALANCES OF BUILDING FUND.

Building Fund	\$395642.82
New building at Concordia	12628.08
Edmonton	1389.52
St. Louis Seminary	318729.22
	\$728389.64
Less debit balance, Bronxville, boiler house	\$20000 00
Less debit balance, Porto Alegre, new residence	100.00
	20100.00
	\$708289.64

5. St. Louis Seminary Site.

Original cost of site (71.22 acres)	\$183691.06
Interest on notes	6875.00
Taxes due	7576.07
Survey	285.00
Sewer rights	10752.66
Total cost to December 30, 1922	\$209179.79
Offerings of congregations in St. Louis and vicinity	\$75000.00
Paid by Synod	59179.79
	134179.79
Balance, covered by notes	\$75000.00

6. Home Missions.

Disbursed by order of the Board	\$249822.17
Balance, December 31, 1919	\$ 8083.30
Receipts	228133.29
Transferred	107.00
	236323.59
Deficit, December 30, 1922	\$13498.58

7. Foreign Missions.

Disbursed by order of the Board	\$324412.12
Transferred	9399.00
	\$333811.12
Balance, Foreign Missions, December 31, 1919	\$6265.76
Deficit, China Missions, December 31, 1919	4101.53
Net balance, December 31, 1919	\$ 2164.23
Receipts	304563.54
Transferred	9138.32
	315866.09
Deficit, December 30, 1922	\$17945.03

8. Mountain Retreat in India.

Balance, December 31, 1919	\$ 1559.38
Receipts	23104.09
Transferred	3371.48
	\$28034.95
Disbursed by order of the Board	26834.41
Balance, December 30, 1922	\$1200.54

9. Sundry Titles, Foreign Missions.

Receipts, 1921-22	\$74733.89
Disbursed to, or by the order of, the Board or credited on account.	

10. South American Missions.

Deficit, December 31, 1919	\$ 3408.96
Disbursed by order of the Board	159396.57

Receipts	\$162805.53
	132666.46
Deficit, December 30, 1922	\$30139.13

11. Deaf-Mute Missions.

Remitted to the Board	\$61082.50
Balance, December 31, 1919	\$ 9701.73
Receipts	44001.79
	53703.52

Deficit, December 30, 1922	\$7378.96
----------------------------------	-----------

12. Indian Mission.

Remitted to the Board	\$32410.00
Transferred by order of the Board	11550.00
Balance, December 31, 1919	\$ 6836.54
Receipts	36885.31
	43721.85

Deficit, December 30, 1922	\$238.15
----------------------------------	----------

13. Indian Mission Building.

Remitted to the Board	\$34250.00
Balance, December 31, 1919	\$6359.60
Receipts	8447.89*
Transferred by order of the Board	11550.00
	26357.49

Deficit, December 30, 1922	\$7892.51
----------------------------------	-----------

* Does not include \$4,550.00 received by way of transfer.

14. Jewish Mission.

Balance, December 31, 1919	\$4533.03
Receipts	6757.58
Remitted to the Board	\$11290.61
	8800.00
Balance, December 30, 1922	\$2490.61

15. Foreign-Tongue Missions.

Remitted to the Board	\$35050.00
Transferred	2.00
Balance, December 31, 1919	\$ 1535.31
Receipts	27444.33
	28979.64

Deficit, December 30, 1922	\$6072.36
----------------------------------	-----------

16. Immigrant and Seamen's Missions.

Balance, December 31, 1919	\$1974.92
Receipts	8646.54
Remitted to the Board	\$10621.46
	9287.57
Balance, December 30, 1922	\$1333.89

17. European Missions.

Disbursed by order of the Board	\$56855.74
Balance, December 31, 1919	\$ 9462.17
Receipts	38607.32
Transferred	7.00
	48076.49

Deficit, December 30, 1922	\$8779.25
----------------------------------	-----------

18. American Lutheran Board for Relief in Europe.

Receipts, remitted to the Board	\$195963.98
---------------------------------------	-------------

19. Sundry Titles, European Relief.

Receipts, remitted to the Board	\$33285.87
---------------------------------------	------------

20. Negro Missions.

Receipts, remitted to the Board	\$133051.97
---------------------------------------	-------------

21. Sundry Titles, Negro Missions.

Receipts, remitted to the Board, 1921-22	\$33098.00
--	------------

22. Miscellaneous Missions.

Receipts, 1922	\$ 8747.00
By transfer—Helmreich Bequest	10221.49
	\$18968.49

Disbursed, prorated according to budget:—

Home Missions	\$4715.57
Foreign Missions	4939.39
South American Missions	1796.32
European Missions	673.38
Deaf-mute Missions	899.11
Indian Mission	673.38
Foreign-tongue Missions	538.70
Immigrant and Seamen's Missions	240.90
Negro Missions	4491.74
	\$18968.49

23. Church Extension Fund.

Receipts: $\frac{3}{4}$ of Jubilee Collection	\$ 67899.85
General	12294.75
Repayments of loans	179068.50

	\$259263.10
Balance, December 30, 1919	5709.61
Transfer: Army and Navy Fund balance	313747.24
Transfer from suspense	400.47

Disbursed by order of the Board	\$521282.22
Transfer	47.45
	521329.67

Balance, December 30, 1922	\$57790.75
----------------------------------	------------

24. Church Extension Fund—Jubilee Collection.

Receipts	\$92255.53
Disbursements: Total collection expenses	\$ 1722.40
Church Extension Fund, $\frac{3}{4}$ of balance	67899.85
European Church Extension, $\frac{1}{8}$ of balance	11316.64
Foreign Missions Church Extension, $\frac{1}{8}$ of balance	11316.64
	\$92255.53

25. Board of Support.

Receipts		\$49101.61
Deficit, December 31, 1919	\$ 1237.09	
Remitted to the Board	413500.00	
Transferred	260.00	
		414997.00
Balance, December 30, 1922		\$76019.22

26. Pension Fund.

(Conference Fund included.)

Balance, December 31, 1919	\$27123.62	
Receipts	11549.90	
Proceeds	4910.20	
Proceeds to Board of Support		\$43583.72
		4910.20
Balance, December 30, 1922		\$38673.52

27. General Relief.

Receipts: General	\$3762.27	
From Treasurer Aug. Lange	2620.05	
		\$6382.32
Remitted to the Board	\$2471.84	
Disbursed by order of the Board	1900.00	
		4371.84
Balance, December 30, 1922		\$2010.48

28. Sundry Titles, General Relief.

Receipts, disbursed through the Board	\$3268.61
---	-----------

29. Thank-Offering.

Receipts	*\$17199.35
Disbursed pro rata among treasuries having deficits on December 31, 1921: —	
Synodical Treasury	\$13823.12
Foreign Missions	1162.67
South American Missions	1879.88
European Missions	91.16
Deaf-mute Missions	86.00
Foreign-tongue Missions	156.52

* \$280.65, received in 1921, included in Col. 30, General Survey of Receipts.

30. Sundry Accounts.

This column includes such accounts as Australia and New Zealand, Michigan School Fund, and Fort Wayne Deaconess, that were recorded in separate columns at times. It also includes all of the items recorded in Col. 30 of my annual reports, in which they appear in detail.

Legacies.

Balance, December 31, 1919	\$87379.80
----------------------------------	------------

RECEIPTS — NEW LEGACIES.

Added to General Legacies Account	\$ 990.12
Johanna and Martha Altwaser Legacy	200.00
David Bauer Bequest	500.00
Foreign Missions Legacy	1000.00

Foreign Missions Endowment	500.00
Fred Gaedke Bequest	1500.00
William Gehrke Legacy	480.00
Conrad Helmreich Bequest	10221.49
Horst Scholarship Foundation	10000.00
St. Louis Seminary Indigent Student's Endowment	100.00
C. Jörn Legacy	1000.00
Frederic William Kastenhuber Legacy	8994.17
Ohlendorf Bequest	200.00
Louis Ortner Legacy	250.00
Rosaline Ploetz Endowment	1100.00
John Rahmes Bequest	186.00
Mrs. Louise Schmidt Legacy	500.00
J. F. Schuricht Legacy	1120.00
Board of Support Legacy	100.00
Henry and Dorothea Thuernau Legacy	500.00
Tredup Endowment	200.00
Johann Winter Bequest	1000.00
H. C. Zuttermeister Legacy	2000.00

42641.78

PROCEEDS,

Proceeds of all legacies	16237.47
--------------------------------	----------

\$146259.05

DISBURSEMENTS.

Undivided proceeds (General Legacies Account) ...	\$3435.49
Added to capital (General Legacies Account)	981.19

To Synodical Treasury: —

General Legacies Account	\$4365.73
Altwaser Legacy	14.58
Aulich Legacy	150.00
David Bauer Bequest	500.00
Mohr Legacy	23.64
Nikkel Legacy	300.00
Ohlendorf Bequest	200.00
	5553.95

To Home Missions: —

Block Memorial	\$ 150.00
Dierksen Legacy	75.00
Endowment Fund for Home Missions	27.30
Louise Mohn Legacy	1050.00
Savings of a Pastor's Wife	150.00
Nikkel Legacy	150.00
Steinfath Legacy	7.14
	1609.44

To Board of Support: —

Annuity Endowment	\$ 22.50
Board of Support Legacy	23.49
Busse Legacy	30.00
Anna Fuelling Legacy	15.00
Boeppinger Legacy	300.00
Greb Legacy	225.00
Hamann Legacy	210.00
Harms Legacy	750.00
Mrs. W. Koelling Legacy	30.00
Ortner Legacy	10.06
Raithel Legacy	689.70
Reuter Legacy	75.00
Mrs. Louise Schmidt Legacy	7.29
Schnake Legacy	15.00

Schultz Legacy	150.00	
Starke Legacy	1350.00	
Strobecke Legacy	150.00	
Henry and Dorothea Thuernau Legacy	117.43	
		4170.47
To Foreign Missions Board: —		
Block Memorial	\$150.00	
Foreign Missions Legacy	111.25	
Foreign Missions Endowment	45.83	
Gehrke Legacy	48.00	
Tredup Endowment	20.58	
		375.66
For indigent students (to Professors Pieper, Mezger, Fritz, Biedermann, Wesel, Klein, Kohn, Jesse, Stein, Barth, and Pastor A. Lange): —		
General Legacies Account	\$220.00	
Block Memorial	600.00	
Burke Legacy	75.00	
Heitmueller Legacy	150.00	
Indigent Students' Fund	150.00	
Jorn Legacy	70.84	
Dorothea Landre Legacy	300.00	
Mueller Legacy	60.00	
Magdalena Poetsch Legacy	150.00	
St. Louis Indigent Students' Legacy	150.00	
St. Louis Seminary Indigent Students' Endowment	4.79	
Scheel Legacy	75.00	
Springfield Indigent Students' Legacy	150.00	
H. Starke Legacy	150.00	
Tiarks Legacy	750.00	
Weisbrodt Legacy	98.60	
Willner Legacy	371.36	
Zuttermeister Legacy	75.00	
		3600.59
To South American Missions: —		
Schuricht Legacy		40.44
To European Free Church for Bavaria: —		
Kastenhuber Legacy		266.31
To Church Extension Board: —		
Ladwig Legacy		75.00
To Wheat Ridge Sanitarium: —		
Ladwig Legacy		37.50
To Watertown Institute for Feeble-minded and Epileptics: —		
Ladwig Legacy		37.50
To Director Romoser for Bronxville Library: —		
Lamprecht Endowment		150.00
To Indian Mission Board: —		
Scheel Legacy		37.50
To Board for Negro Missions: —		
Gaedke Bequest	\$1500.00	
Ploetz Endowment	46.74	
Scheel Legacy	37.50	
		1584.24

To Horst Scholarship Disbursement Account, Horst Scholarship Foundation	337.36	
To Miscellaneous Missions: —		
Helmreich Bequest	\$10221.49	
Rahmes Bequest	186.00	
		10407.49
Administration expenses		214.22
		32914.35
Balance in Legacy Accounts, December 30, 1922...		\$113344.70

Balance.

	Debits.		Credits.
Bronxville boiler house	20000 00	Annuity Endowments (Board of Support) ..	11800 00
De Mun Tract	134179 79	Australia and New Zealand Missions	685 08
Porto Alegre residence ..	100 00	Bills payable	82900 00
Deaf-mute Missions ..	7378 98	Building Fund	395642 82
Deaf-mute chapel	6000 00	Building at Concordia ..	12628 08
European Missions ..	8779 25	Building at Edmonton ..	1389 52
Foreign Missions	17945 03	New Seminary at St. Louis	318729 22
Foreign-tongue Missions ..	6072 36	Church Extension Acc't ..	57790 75
Home Missions	13498 58	Church Extension Reserve ..	50000 00
Indian Mission	238 15	Undivided proceeds	45936 48
Indian Mission building ..	7892 51	European Church Extension Fund	13701 31
Oregon School Campaign ..	9001 28	Church Extension Fund for Foreign Missions ..	12560 64
South American Missions ..	30139 13	Mountain Retreat	1200 54
Synodical Treasury ..	10993 83	Immigrant and Seamen's Missions	1332 89
Sundry accounts	374 67	Jewish Mission	2490 61
Investments: —		Legacies	113344 70
Bills receivable	8000 00	Board of Support	76019 22
Bonds	756662 39	Pension Fund	38673 52
Loans	121397 92	Relief Fund	2010 48
Cash	94413 37	Sundry accounts	14231 38
	1253067 24		1253067 24

Final Balance, Regrouped.

SYNOD'S LIABILITIES.

Annuity Endowments (Board of Support Treasury) \$	11800.00
Bills payable	82900.00
Church Extension Fund	57790.75
Reserve Fund	50000.00
European Missions	13701.31
Foreign Missions	12560.64
Mountain Retreat (Foreign Missions)	1200.54
Legacies	113344.70
Board of Support	76019.22
Pension Fund (including Conference Fund)	38673.52
Relief	2010.48
Sundry credits	14231.38

\$474232.54

The following treasuries show a *credit* balance:—

Australia and New Zealand Missions	685.08
Building Fund	395642.82
New building in Concordia	12628.08
New building in Edmonton	1389.52
New building in St. Louis	318729.22
Undivided proceeds	45936.48
Immigrant and Seamen's Missions	1332.89
Jewish Mission	2490.61

\$1253067.24

SYNOD'S ASSETS.

Bills receivable	\$ 8000.00
Bonds (including Building Fund)	756662.39
Secured loans	121397.92

\$886060.31

Synod has *expectancies* on sundry accounts amounting to 154279.79

The following treasuries show a *debit* balance:—

Deaf-mute Missions	7378.98
Chapel	6000.00
European Missions	8779.25
Foreign Missions	17945.03
Foreign-tongue Missions	6072.36
Home Missions	13498.58
Indian Mission	238.15
New building	7892.51
Oregon School Campaign	9001.28
South American Missions	30139.13
Synodical Treasury	10993.83
Sundry debits	374.67

1158653.87

Cash balance \$94413.37

The committee reported that the accounts had been duly audited by a disinterested expert auditing committee, that the moneys of Synod are handled so as to safeguard the person of the Treasurer and the funds of Synod. The committee also called Synod's attention to the fact that its fiscal business has grown from a turnover of \$465,138.23 in 1913 to \$2,489,990.74 in 1922; from a monthly pay-roll (including pensions in both instances) of \$9,279 in 1913 to \$35,421.90 in 1922; from an annual disbursement for missionary purposes of \$114,915.72 in 1913 to \$455,743.69 in 1922; from an aggregate productive investment of \$17,185.20 in 1913 to \$886,060.31 in 1922, while at the same time the per capita indebtedness decreased from 22 cents to 15 cents; from \$291,170.22 aggregate annual contributions for what are now called the budgeted treasuries to \$994,645.87.—*Adopted.*

The Board of Directors was instructed to provide for proper and efficient help for the Treasurer.

Legacies.

The following is the complete list of the legacies under the care of the Legacy Officer on December 31, 1922, classified by name, book value, gross proceeds during the last three years, and beneficiary.

No.	Name of Legacy.	Book Value.	Proceeds 1920—1922.	Beneficiary.
1.	Savings of a Pastor's Wife	\$1000.00	\$ 150.00	Home Missions.
2.	Mohn	7000.00	1050.00	Home Missions.
3.	Steinfath	47.50	7.14	Home Missions.
4.	Dierkson	500.00	75.00	Home Missions.
5.	Indigent Students' Fund.	1000.00	150.00	Indigent students.
6.	Weisbrodt	656.94	98.60	Indigent students.
7.	Scheel	1000.00	150.00	Indigent students, Indian Mission, Negro Missions.
8.	Poetsch	1000.00	150.00	Indigent students.
9.	Willner	3209.24	467.04	Indigent students.
10.	Starke	1000.00	150.00	Indigent students.
11.	Raithel—farm	—	689.70	Board of Support.
12.	Heitzmueller	1000.00	150.00	Indigent students.
13.	Landre	2000.00	300.00	Indigent students.
14.	Stutz—real estate	—	981.19	General Legacies.
15.	Mueller	400.00	60.00	Indigent students.
16.	Burke	500.00	75.00	Indigent students.
17.	Endowment Fund for Home Missions	182.04	27.30	Home Missions.
18.	Mohr—partly real estate	236.92	23.64	Synodical Treasury.
19.	Nikkel	3000.00	450.00	Synodical Treasury.
20.	St. Louis Concordia Seminary	1013.12	137.94	Concordia Seminary.
21.	St. Louis Indigent Students	1000.00	150.00	Indigent students.
22.	Springfield Indigent Students	1000.00	150.00	Indigent students.
23.	Tiarks	5000.00	750.00	Indigent students.
24.	Block Memorial	6000.00	900.00	Indigent students, Home Missions, Foreign Missions.
25.	Aulich	1000.00	150.00	Synodical Treasury.
26.	Ladwig Endowment	1000.00	150.00	Church Extension, Wheat Ridge Sanitarium, Water-town Institute.
27.	Koelling	200.00	30.00	Board of Support.
28.	Reuter	500.00	75.00	Board of Support.
29.	Schultz	1000.00	150.00	Board of Support.
30.	Strobecke	1000.00	150.00	Board of Support.
31.	Schnake	100.00	15.00	Board of Support.
32.	Hamann	1400.00	210.00	Board of Support.
33.	Harms	5000.00	750.00	Board of Support.
34.	Fuelling	100.00	15.00	Board of Support.
35.	Goeppinger	2000.00	300.00	Board of Support.
36.	Greb	1500.00	225.00	Board of Support.
37.	Annuity Endowment	150.00	22.50	Board of Support.

No.	Name of Legacy.	Book Value.	Proceeds 1920-1922.	Beneficiary.
38.	Busse	200.00	30.00	Board of Support.
39.	Starke	9000.00	1350.00	Board of Support.
40.	Lamprecht Endowment ..	1000.00	150.00	Bronxville library.
41.	Altwaser	200.00	14.58	Synodical Treasury.
42.	Board of Support	100.00	23.49	Board of Support.
43.	Foreign Missions	1000.00	111.25	Foreign Missions.
44.	Foreign Missions Endowment	500.00	45.83	Foreign Missions.
45.	Gehrke	480.00	48.00	Foreign Missions.
46.	Horst Scholarship Foundation	10000.00	337.36	St. Louis postgraduate students.
47.	Jorn	1000.00	70.84	Indigent students.
48.	Kastenhuber	9443.87	716.01	Free Church of Saxony.
49.	Ortner	250.00	10.06	Board of Support.
50.	Ploetz Endowment	1100.00	46.74	Negro Missions.
51.	St. Louis Seminary Indigent Students' Endowment	100.00	4.79	Indigent students.
52.	Schmidt	500.00	7.29	Board of Support.
53.	Schuricht	1120.00	40.44	South American Missions.
54.	Thuernau	500.00	117.43	Board of Support.
55.	Tredup Endowment	200.00	20.58	Foreign Missions.
56.	Winter Bequest	1000.00	—	Concordia Seminary.
57.	Zuttermeister	2000.00	75.00	Indigent students.
58.	General Legacies Account	21000.00	4425.61	Undivided proceeds.

In comparison with the 1920 report, it will be seen that the aggregate value of all legacies has been increased through additions from \$87,379.80 to \$113,344.70. This amount does not include the legacies consisting of real estate, namely, the Raithel farms in Lawrence County, Mo., the Mohr and Stutz properties in Washington, D. C., and the Lindhorst property in Michigan. It does, however, include several items which will be, or since have been, disbursed, namely, the St. Louis Concordia Seminary Bequest, the Winter Bequest, \$449.70 of the proceeds of the Kastenhuber Legacy, and \$95.68 of the proceeds of the Willner Legacy.

Legacies Nos. 1 to 40 and No. 58 appeared in the report of 1920 in the same rotation. No. 41 to No. 57 has been added since then, and the proceeds of Nos. 41 to 57 are therefore not for three years, but for the time they were in the possession of Synod.

The 1920 report contained two errors which are reflected by comparison with this report. The Fuelling Legacy, No. 34, was reported with a book value of \$1,000, whereas it really is \$100, and the Busse Legacy, No. 38, was reported at \$2,000, whereas it is \$200.

The Mohr Legacy, No. 18, shows a reduction in value. The property involved was recently repaired and renovated, the cost of which

was charged to the book account. It has been rented and is now producing a reasonable revenue.

During the last three years \$4,365.73 was disbursed from the General Legacies account to the Synodical Treasury. This reduced its book value to approximately its original value of \$21,000.

Regarding the Raithel farms, there exists a probability of Synod's losing a substantial amount, though we are hopeful of sparing Synod this loss. It is not wise here and now to discuss the details of this probable loss, but your Legacy Officer feels that he cannot omit reference to this fact in his report.

Many years ago a practise was inaugurated to invest in bulk all moneys coming to the Synod in the shape of legacies. In the opinion of your Legacy Officer, supported by former boards and your Board of Directors, this has proved not only practical, but also more productive in the aggregate. Under this arrangement all legacies, excepting those consisting of real estate, are now uniformly credited with a revenue of five per cent. per annum. Investments are made by your Legacy Officer under the control of a special investment committee appointed by your Board of Directors. Thanks are due Messrs. A. G. Brauer and Robert H. Leonhardt for faithful and circumspect services in this connection. Mr. John W. Boehne and other members of the Board of Directors have also occasionally been drawn into consultation. Synod's Board of Auditors is periodically satisfying itself that your Legacy Officer always keeps an ample sum productively invested to cover all legacies under his care.

Supplementary Report.

The following Districts report that they hold or control no legacies (or endowments), Church Extension Funds omitted: Atlantic, Canada, Central Illinois, Kansas, Michigan, Minnesota, North Dakota and Montana, North Wisconsin, Oregon and Washington, Southern, Southern Illinois, Texas, Western, Colorado, Alberta and British Columbia, Manitoba and Saskatchewan, Northern Nebraska.

The following Districts did not report: English and South Wisconsin.

Legacies (or endowments) are held or controlled by the remaining Districts as follows:—

	Value.	Purpose of Proceeds.
<i>California and Nevada District:</i>		
Rev. and Mrs. W. Grunow ...	\$ 5804.25	Indigent students.
<i>Central District:</i>		
G. Scheiderer ..	1000.00	Indigent students.
Mrs. Zimmermann	2000.00	Missions.
<i>Eastern District:</i>		
Simon Becker ..	30000.00	Indigent students.
John Ehrlinger	500.00	Indigent students.

	Value.	Purpose of Proceeds.
Iowa District: Sophie Wente	1000.00	Indigent students, Foreign Missions, Board of Support.
Louise Schmidt	500.00	
Barbara Schlacht	200.00	
Christina Voelz	1000.00	
William Holst	257.00	
H. Goepfinger	1000.00	
Bertha Rammelsberg	1000.00	
Ten acres of land	1000.00	Accrues to capital.
Southern Nebraska District: O. E. Bernecker	500.00	Indigent students.
Mrs. Marie Lauppe	100.00	Indigent students.
Chas. A. Beckmann	100.00	Indigent students.
Northern Illinois District: Krieg	550.00	Indigent students.
Diekmann-Werfelmann	250.00	Indigent students.
F. Meyer	373.70	Indigent students.
Gottlieb Schwarz	1000.00	Orphanage in Addison.
Barbara Bass	243.00	Indigent students.
Oehlerking	1000.00	Board of Support.
C. F.	500.00	District Home Missions and indigent students.
Aug. Bandemer	100.00	Indigent students.
Aug. Hasselbring	1000.00	Synodical Treasury.
Raithel (Farm)	—	Immigrant Mission and indigent students.
South Dakota District: Conrad Eisenbraun	300.00	College Fund.

The following synodical institutions own or control no legacies (or endowments): Bronxville, Conover, Concordia, Edmonton, Oakland, Portland, St. Paul, Seward.

The following institutions own or control legacies (or endowments). Detailed reports have been filed with me, but owing to their complexness and variations in form, I am submitting them in brief only.

Institution.	Value.	Proceeds.
Fort Wayne	\$26475.56	\$6658.60
Milwaukee	12900.00	1507.77
River Forest	11450.00	1928.36
St. Louis	23958.48	—
Springfield	10916.47	1502.69
Winfield	5216.00	45.00

The General Relief Board has the following legacy:—

Hudtloff	\$1000.00	\$150.00*
----------------	-----------	-----------

* Proceeds for indigent students.

None of Synod's mission boards hold or control any legacies.

April 27, 1923.

E. SEUEL, *Legacy Officer.*

Synod recommended that all legacies be placed under the management and care of the General Body.

While the legacies for various activities of Synod have increased,

Synod nevertheless reminded those brethren who have been richly blessed with earthly means to remember how richly they have been blessed with all spiritual blessings by the Lord, who intends to bless them in all eternity, and as good stewards to bequeath more treasures to the Lord and His kingdom here on earth.

Mr. Seuel was accorded a rising vote of thanks for his faithful and conscientious work, and the hope was expressed that the Lord would permit him to serve us for many years to come.

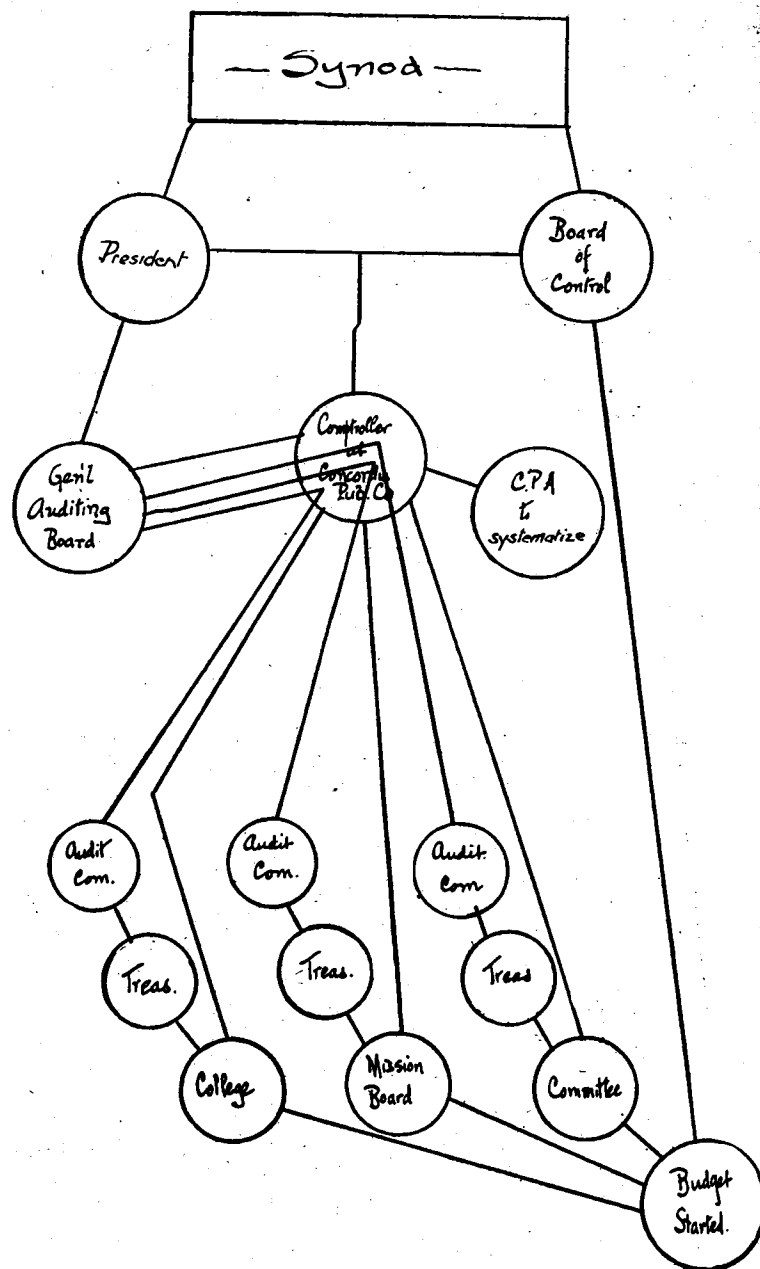
Auditors' Report.

(Germ. Rep., p. 209.)

The Board of Auditors reported that it had received the audits and reports from the majority of synodical boards and missions, and suggested that it would be only reasonable to persist in securing reports from such bodies as have not submitted them in order to bring the scope of the work up to date. The Board reported also that the various constituencies receive and expend upwards of two and a half million dollars annually.

In order to secure a better regulation of Synod's financial affairs, the Board recommended the establishment of some particular and responsible office and officers, through whom regular annual audits may be filed with Synod, and who may be invested with the proper authority, as a financial comptroller or chancellor, in order to ascertain, in making all disbursements, that an appropriation has been made for them, that they are within the budget, and that enough of the appropriated funds remain on hand to carry Synod through for the stipulated period covered by the budget and appropriation. Such an office could devise, maintain, and require a standard form of balance sheet and audit report. Such an office could advise on investments, with proper regard for the security of the principal thereof, and for the relief from personal liability of the individual charged with investing the funds, on account of any failures in or of investments, and if it be desired that such an office should not have the power to advise and make investments, your committee suggests that Synod have a financial or executive committee, few in number, centrally located and accessible to business men of experience and judgment, whose duty it would be to pass on, and make, such investments, and give a release and discharge of the officer, the body, the school, or mission from whom the funds invested had been received.

The Board of Auditors also presented the accompanying chart bringing out its ideas as to the grades of responsibility and the efficient cooperation of all the officers and employees of Synod and its constituent bodies in matters of finance.



ACTION.

The committee in charge of this report drew Synod's attention to the great diligence of the General Auditing Committee. All auditing committees obliged to send in a report were most emphatically and heartily requested to cooperate with the General Auditing Committee and to send in their reports in due time.

The request of the Auditing Committee for the appointment of a comptroller was referred to the Board of Directors.

Extra Collections.—Synod declined to pass resolutions regulating the arrangement of extra collections since this is an affair of the various Districts and individual congregations.

Uniform Treasurers' Reports.—In order to obtain uniformity and exactness in the reports of treasurers and to secure for a current year all moneys collected during that year, Synod resolved—

1. To recommend that congregations close their books on December 31;
2. That Districts close their books on January 15;
3. That the Treasurer of Synod close his books on January 31.

Budget System.—The Budget system for Synod proposed by the visitors of the North Wisconsin District was rejected.

Abolishment of Ahlbrand Plan.—Since this proposal rested on the false assumption that Synod fixed a quota for each District, congregation, and individual and then insisted on payment, Synod declined the proposal.

Contingent Reserve Fund.—In order to provide for certain elasticity in the budget and to eliminate deficits where these can be avoided, Synod resolved—

That the Board of Directors be authorized and instructed to incorporate an item in the synodical budget to be termed "Contingent Reserve Fund"; and

That for the year 1924 the sum to be appropriated for the "Contingent Reserve Fund" be fixed at 2½ per cent. of the gross amount of the budget; and

That in the years thereafter the sum to be appropriated for the "Contingent Reserve Fund" shall be sufficient to bring its balance to 2½ per cent. of the gross budget; and

That in computing the 2½ per cent. the Building Fund be not included in the budget; and

That disbursements chargeable to the "Contingent Reserve Fund" may be made by the Treasurer of Synod only upon authorization of the Board of Directors of Synod; and

That such disbursements can be authorized and made only to the treasuries budgeted by Synod; and

That the Board of Directors shall be responsible to Synod for all disbursements so authorized and paid out of the "Contingent Reserve Fund."

Financing the Building Program. — In order to make systematic and concerted action for raising the funds appropriated, Synod resolved that the President be asked to call a meeting of the Board of Directors and of the District presidents to devise ways and means for collecting the moneys appropriated. The Committee on Finances offered the following recommendations which were adopted by Synod: —

1. That a Ways and Means Committee be appointed;
2. That this committee be appointed by the Board of Directors;
3. That the needed funds be raised this fall;
4. That the Committee on Ways and Means send a complete statement of the appropriations to all pastors, teachers and delegates;
5. That each District president send a communication on this matter to every congregation of his District at an appropriate time.

General Relief Fund Excluded from the Budget. — The resolution of the last convention (Germ. Rep. 1920, p. 291) was reconsidered and the Board of Directors authorized and instructed in future not to include the General Relief Fund in the budget, since it does not serve missionary, but charitable purposes.

Financial Report of Board of Relief.

Accident and Relief Fund.

RECEIPTS.

Balance, December 31, 1919	\$5707.35
Contributions: 1920	1275.05
1921	3123.39
1922	4236.73
Repayments: 1920	500.00
1921	2200.00
1922	950.00
	<hr/> \$17992.52

DISBURSEMENTS.

1920.

Storm damages, several congregations	\$2037.83
Indigent persons	400.00
Loans	1600.00
Expense: Exchange	19.32
Refund: Error General Treasury	287.31
	<hr/> \$4344.46

1921.

Storm and other damages, several congregations	\$ 213.77
Buildings, congregations	1543.10
Indigent persons	850.00
Loans	2250.00
Expense	2.00
	<hr/> 4858.87

1922.

Fire damage, congregation	\$2500.00
Buildings, congregations	1926.17
Indigent persons	1150.00
Loans	1275.00
Refund: Error	1.00
Expense: Safe-deposit box	2.00
	<hr/> 6854.17
	<hr/> 16057.50

Balance, December 31, 1922 \$1935.02

Special Contributions Received and Paid by Board.

1920.

Polish congregation	\$ 60.00
National Aid Society	31.00
Armenian sufferers	325.67
Lepers	1.00
Red Cross, antituberculosis work	12.50
Indigent pastors	10.00
Isle of Pines	4.30
Near East Relief	115.50
Siberian sufferers07
	<hr/> \$560.04

1921.

Armenian sufferers	\$318.18
Siberian sufferers	2.00
	<hr/> \$320.18

1922.

Near East Relief	\$178.00
Armenian sufferers	38.15
	<hr/> \$216.15

Poetsch Legacy Earnings.

RECEIPTS.

By Treasurer Seuel: 1919	\$ 50.00
1920, 1921	100.00
1922	50.00
	<hr/> \$200.00

DISBURSEMENTS.

To indigent students	\$ 50.00
To indigent students	100.00
	<hr/> 150.00

Balance, December 31, 1922 50.00

Rudtloff Legacy.

RECEIPTS.

Capital	\$1000.00
Earnings: 1920, 1921, 1922	125.00
	<hr/> \$1125.00

DISBURSEMENTS.

Capital invested (bond)	\$1000.00
To indigent students, 1921	50.00
	<hr/> 1050.00

Balance, December 31, 1922 75.00

Investments.

Liberty Bonds	\$ 700.00
War Savings Stamps	125.90
Rudtloff Legacy (bond)	1000.00
	<hr/> \$1825.90

Investment Earnings.

On \$500 Liberty Bonds, 3½ years	\$74.38
On \$200 Liberty Bonds, 3 years	25.50
On \$500 Liberty Bonds, 1 year	21.25
On \$200 Liberty Bonds, 1 year	8.50

Balance, December 31, 1922	129.63
Total cash balance, December 31, 1922	<hr/> \$2189.65

Funds.

Credit balance, Treasurer E. Seuel, December 31, 1922 ..	\$2010.48
Cash	179.17

Total	<hr/> \$2189.65
-------------	-----------------

Statement of Notes Account.

Loans covered by notes, December 31, 1919	\$10150.00
New loans covered by notes: 1920	1600.00
1921	2250.00
1922	1275.00
	<hr/> \$15275.00
Repayments, 1920	\$ 500.00
Money not collectable	200.00
Repayments: 1921	2200.00
1922	950.00
	<hr/> 3850.00

Balance, December 31, 1922	<hr/> \$11425.00
----------------------------------	------------------

APPEALS.

(Germ. Rep., p. 223.)

1. *Appeal of Pastor J. F. Kunstmann, Porto Alegre, Brazil.* — After carefully examining the charges made against President Pfothenhauer and other officials of Synod, — documents being supplemented by eye- and ear-witnesses, — Synod to a man exonerated its officials and refused to sustain the appellant. The question whether according to equity Synod owes Pastor Kunstmann anything was referred to the Board of Directors.

2. *Appeal of Pastor H. Reinitz, Hoosier, Sask., Can.* — Synod held that the documents which Pastor Reinitz filed in support of his appeal from the decision of the Minnesota and Dakota District prove that no other action could have been taken and sustained the verdict of the Minnesota and Dakota District.

3. *Appeal of Mr. and Mrs. Whipple.* — Synod sustained the decision of the Church of Our Savior, St. Paul, Minn., and of the English District, exhorting Mr. and Mrs. Whipple to recognize in the verdict of the congregation the voice of the Lord.

4. *Appeal of Mrs. Lampe of St. Louis.* — Since Mrs. Lampe refused to appear before the committee of the English District appointed to investigate her case upon her appeal to the English District, Synod refused to entertain the appeal and referred her to the appointed committee of the English District.

5. *Appeal of Mr. and Mrs. H. F. Pieper, Edwardsville, Ill.* — Synod's decision of 1920 was sustained.

6. *Appeal of Pastor J. H. Fuhrmann.* — The appeal was rejected.

INTERSYNODICAL MATTERS.

(Germ. Rep., p. 227.)

Since the convention at Detroit three to four meetings were conducted annually with representatives from the Wisconsin, Iowa, Ohio, and Buffalo synods. Theses and antitheses have been adopted on the doctrine of conversion and election. Protest has also been lodged against some of these theses (5, 12, 28, 29).

Synod resolved that a committee be appointed for the purpose of testing these union theses. Said committee is to examine all objections which have so far been lodged — and shall have been lodged until the end of 1925 — and report its findings at the next convention.

Whereas the Intersynodical Committee also reported that discussions on the older doctrinal controversies which have for so long a time separated especially the Missouri, Iowa, and Buffalo synods, have been begun, Synod resolved —

1. To continue the discussions and to that end again elect an Intersynodical Committee;

2. To express its joy over the fact that these earnest efforts to get together with the other Lutheran synods are being made. Synod hopes that by God's grace complete unity of faith will be achieved.

Agreement with the Norwegian Synod.

(Germ. Rep., p. 229.)

The Norwegian Synod of the American Evangelical Lutheran Church petitioned Synod for permission to send its students to Concordia Seminary, St. Louis, Mo., and to elect a professor who would

be able to instruct them in Norwegian and English, offering to pay the expenses connected with this professorship.

Synod resolved —

1. To grant the request of the Norwegian Synod with regard to permitting it to send its students to our seminary at St. Louis;
2. To permit it to place a professor at St. Louis;
3. To empower the faculty and board at St. Louis together with the officers of the Norwegian Synod to regulate the work of this professor.

Finnish Evangelical Lutheran National Church.

(Germ. Rep., p. 230.)

Three conferences between representatives of the Missouri Synod and the Finnish Evangelical Lutheran National Church resulted in the adoption of the following memorandum: —

"1. The discussion which took place at the pastoral conference at Ironwood, Mich., on June 3, 1923, showed that we agreed in the principal doctrines.

"2. However, we also found that in a practical question, namely, in regard to woman suffrage in the Church, there was a divergent polity in the two conferring synods, and that this question related to the correct understanding and strict application of certain Bible-texts.

"3. Inasmuch as both parties bow to the Word of God, it is our opinion that the discussion of this question, as well as the deliberation regarding official fraternal recognition of each other by the conferring parties and regarding an eventual union, should be continued; and that the Finnish National Church should appoint a committee for this purpose, which is to continue the conference with the committee of the Missouri Synod.

"4. As regards the statement in the official letter of President Salonen to our President, Dr. F. Pfothenhauer, concerning the training of Finnish students, we declare that, if requested, we as a committee are ready to recommend to our Synod to make the necessary arrangements at one of our schools for admitting students from the Finnish National Church under the same conditions with our own students."

(Signed.) F. PFOTENHAUER. W. H. T. DAU. H. DAIB.
K. E. SALONEN. P. MIETTINEN.

"This memorandum was discussed point for point by the Finnish Synod and a committee composed of Pastors Niemi, Miettinen, and Hirvi was elected to continue negotiations with our committee."

F. PFOTENHAUER. W. H. T. DAU. H. DAIB.

Hereupon Synod resolved —

To approve the action of President Pfothenhauer;

To express its heartfelt joy at the results achieved by the conferences and at the unity in the chief doctrines of the Lutheran confessions as reported by the committee;

3. To continue the discussions with the Finnish National Church with the hope that complete unity may be achieved between the two synods in all matters, also in the practical questions on woman suffrage;

4. To grant students from the Finnish Church the same educational privileges enjoyed by our own students.

Inquiry of Pastors Koester, Brauer, and Danitschek.

(Germ. Rep., p. 231.)

The above-named pastors inquired if Synod were ready to resume fraternal relations with them on the basis of a thesis on which a dissension which arose in the Saxon Free Church was settled, as reported in *Lutheraner*, December 26, 1922.

Synod resolved to refer these men back to the Kansas District from which they had been expelled.

SPECIAL REPORTS AND MEMORIALS.

Report of the Board of Directors.

(Germ. Rep., p. 232.)

1. First meeting, July 7 and 8, 1920. Organization: President F. Pfothenhauer, chairman; Rev. M. F. Kretzmann, secretary; Mr. E. Seuel, treasurer. Rev. Wm. Hagen and Messrs. B. Bosse and H. W. Horst were elected a Committee on Buildings. This committee has taken over the duties of the former General Board of Control.

2. Twenty-one meetings were held to date, of which exact minutes were kept.

3. Professors' salaries were raised according to resolutions passed by Synod.

4. A site of 71.215 acres on the western outskirts of St. Louis was purchased for the Seminary. The cost was \$185,387.31. The St. Louis congregations contributed \$75,000.

5. Day & Klauder of Philadelphia were engaged as architects for the Seminary.

6. The appropriations for the various institutions were carried out according to the resolutions of Synod, as far as it was possible to do so.

7. After consultation with a reliable attorney the question of incorporating the institution at Bronxville was dropped.

8. The institution in Northwestern Canada was opened at Edmonton in rented buildings.

9. Synod's charter was revised according to the new constitution.

10. The matter of incorporating Synod in other States than Missouri was repeatedly considered. It was resolved to report that the Board of Directors finds no cause for tampering with the existing incorporation since the incorporation in Missouri seems to be as safe as it can be made in any State.

11. The regulations governing loans from the Church Extension Fund were revised.

12. After a thorough investigation the prices charged for our periodicals in Canada were not found to be excessive.

13. According to the instructions of the previous convention (1920) a financial secretary, Mr. Theo. W. Eckhart, was engaged.

14. Having been charged with the duty of deciding on Synod's headquarters, the Board of Directors resolved that the office of Synod shall be located at St. Louis, Mo.

15. Since the administration of legacies was turned over to the Board of Directors, the Treasurer, Mr. Seuel, was elected Legacy Officer.

16. Since it has pleased the Lord of the Church to summon from his labors into the rest of the children of God a most active and faithful member of this Board, Mr. Benjamin Bosse, the vacancy was filled by the election of Mr. J. W. Boehne, of Evansville, Ind. The latter served on the Finance Committee with President Pfotenhauer and Treasurer Seuel. Mr. Bosse's place on the Committee on Buildings was filled by Mr. F. C. Pritzlaff.

ACTION.

The report was adopted. Synod passed a vote of thanks to the Board of Directors for faithful service and to the congregations at St. Louis, Mo., for their donation of \$75,000. The Board's action in filling the position made vacant by the death of Mr. Bosse was ratified.

Bureau of Statistics.

(Germ. Rep., p. 234.)

Synod resolved to create a Bureau of Statistics, which is to be under the care of the official statistician, who is responsible to the Board of Directors. Synod furthermore resolved that all who desire to gather statistics of any kind shall first apply to this bureau to learn how far their desires can be met.

Committee on Church Architecture.

(Germ. Rep., p. 234.)

Synod resolved to create a Committee on Church Architecture, charging this committee at the same time to extend its activities to include also School and Organ Architecture. The committee of the English District, composed of Rev. F. R. Webber, of Cleveland, Mr. E. F. Bernhard, of New York, and Mr. John F. Krienstein, of Chicago, was made the synodical Committee on Architecture. Owing to the increased work this committee was authorized to elect two additional members with the consent of the President.

Time of Conventions of Synod.

It was resolved that Synod always convene during the latter part of June.

MISCELLANEOUS.

(Germ. Rep., p. 236.)

Doctrinal Papers.

At three morning sessions Prof. F. Pieper, D. D., read a paper in German on *The Christian World View*. At two morning sessions Prof. F. Bente read an English essay on *Following the Faith of Our Fathers*.

Resolved that the essays be printed in pamphlet form.

Services.

In addition to the opening service, the following services were conducted: a school service (Concordia Church) on Friday, June 22, with an English sermon by Pastor Th. Schurdel; a pastoral service with Holy Communion (Zion Church), Wednesday evening, June 27, with a sermon by Prof. J. H. C. Fritz and a confessional address by Pastor J. H. Hartenberger; a mission service (St. Paul's Church) June 24, with the following: addresses by Prof. W. H. T. Dau on European Missions, by Vice-President F. Brand on China and India Missions, by Pastor A. Burgdorf on South America Missions, and by Pastor H. J. Paetiaelae on the Finnish Ev. Luth. National Church of North America. The last address was translated by Pastor Wegelius, who completed his studies in St. Louis in June and is about to enter the service of the Lutheran Church of Finland.

Resolutions of Thanks.

In addition to the votes of thanks mentioned in the *Proceedings*, Synod in its last session passed a vote of thanks to the following:—

1. To the departing officials;
2. To the congregations of Fort Wayne and vicinity;
3. To the essayists, Dr. Pieper and Prof. Bente;
4. To the publishers of the Fort Wayne papers for their daily reports.

Greetings.

Greetings were received from the National Lutheran Education Association, from the Hon. Norwegian Synod, from the Hon. Wisconsin Synod, and from Pastor W. H. Lothmann, of Akron, O.

Greetings and congratulations were extended to the following: To Pastor Paul Schwan on the fiftieth anniversary of his induction into office; to the deaf-mute Institute at Detroit on its golden anniversary; to the brethren in Germany through the Rev. Th. Nickel, D.D.; to all foreign missionaries. Through its chairman Synod congratulated Dr. F. Pieper on his 71st birthday, June 27, and extended greetings to the aged Dr. H. Walker, who was not able to attend Synod.

The following guests from foreign countries were welcomed by the President: Dr. Th. Nickel, who extended the Australian Ev. Luth. Synod's brotherly greetings to our Synod and also represented the brethren in Germany; Pastor H. J. Paetiaelae, of Finland; Mr. J. Herrmann, of Zwickau, Germany.

School Conference.

On Monday and Tuesday preceding the opening of the convention a general school conference was held in Concordia Church, which was attended by representatives of various Districts.

Lutheran Laymen's League.

The National Convention of the Lutheran Laymen's League was held in Concordia College chapel on Monday and Tuesday, June 18 and 19.

Meeting of Lay Delegates.

A number of meetings were held by the lay delegates attending Synod to deliberate on important business matters which were submitted to Synod.

Next Convention.

God willing, the next convention of Synod will take place at St. Louis in the latter part of June, 1926.

Close of Synod.

The fifteenth and last session of the Thirty-second National Convention of the Synod of Missouri, Ohio, and Other States was held on Friday morning, June 29. After a few appropriate remarks by the President the assembly sang *Now Thank We All Our God*, which was followed by the saying of the Creed and the Lord's Prayer in unison and the Benediction.

SOLI DEO GLORIA!

OFFICERS OF SYNOD.

I. Officers Elected for Three Years.

A. GENERAL OFFICERS.

President: REV. F. PFOTENHAUER, D. D.
First Vice-President: REV. J. W. MILLER.
Second Vice-President: REV. G. A. BERNTHAL.
Third Vice-President: REV. F. BRAND.
Fourth Vice-President: REV. H. P. ECKHARDT.
Secretary: REV. M. F. KRETZMANN.
Treasurer: MR. E. SEUEL.

Board of Directors: The President, the Secretary, and the Treasurer, *ex officio*; Rev. W. Hagen, Detroit, Mich.; Mr. H. W. Horst, Rock Island, Ill.; Mr. A. H. Ahlbrand, Seymour, Ind.; Mr. Walter H. Schlueter, St. Louis, Mo.

Corresponding Secretary: Prof. L. Fuerbringer.

Chronologist and Statistician: Rev. E. Eckhardt.

English District Member on Staff of "Lutheran Witness": Prof. M. S. Sommer.

General Railroad Secretary: Rev. E. Nachtsheim.

B. BOARDS OF CONTROL.

Ex officio, the President of the respective District.

Concordia Seminary, St. Louis: Revs. Th. Laetsch, R. Jesse, L. J. Sieck; Messrs. Eugene Harms, E. Schuettner, O. Huesemann, A. G. Brauer, Chr. Beckemeier.

Concordia Seminary, Springfield: Rev. Paul Schulz; Messrs. G. C. Bretscher, F. Van Horn, H. Ostermeyer.

Concordia Teachers' College, River Forest: Rev. E. Werfelmann; Messrs. Paul Schulze, C. H. Zuttermeister, W. Schlake.

Teachers' Seminary, Seward: Rev. H. Miessler; Messrs. Aug. Beckmann, F. Christjaenner, P. Herpolsheimer, E. Kamprath, C. L. Wassermann.

Concordia College, Fort Wayne: Rev. H. C. Luehr; Messrs. O. Bengs, H. Hartwig, C. F. Scheimann.

Concordia College, Milwaukee: Rev. C. Dietz, Sr.; Messrs. Mart. Keller, W. F. Radieske, Chas. Tegge.

Concordia College, St. Paul: Rev. E. Nachtsheim; Messrs. J. Henke, A. Hillmann, F. Joesting.

St. Paul's College, Concordia: Rev. E. Runge; Messrs. Th. Hinck, H. Rolf, Jul. Vogt, Jr.

Concordia Institute, Bronxville: Rev. W. Koepchen; Messrs. H. Holtorf, F. Overbeck, H. Schroeder.

St. John's College, Winfield: Rev. R. Miessler; Messrs. C. Bersche, D. Meyer, C. C. Mueller.

Concordia College, Conover: Revs. H. A. Burandt, G. E. Mennen; Messrs. C. S. Coyner, C. E. Hefner, John Holler, J. K. Smith.

California Concordia College, Oakland: Revs. M. Liebe, Geo. Mieger; Messrs. E. Hagist, E. Meese, H. Steinbeck.

Concordia College, Portland: Revs. H. H. Koppelman, J. A. Rimbach; Messrs. E. Balgeman, A. A. Kuempel; Teacher R. Kuhnau.

Concordia College, Edmonton: Rev. J. C. Mueller; Messrs. J. Ulmer, R. Waechsel, R. Bieg.

C. ELECTORAL COLLEGES.

(The President of Synod and the local Board of Control are represented by one vote.)

St. Louis: Revs. Alfr. Doerffler, W. H. Behrens, F. Brauer, Alfr. Fuehler, Oscar Kaiser. — Revs. A. P. Feddersen, W. Lichtsinn, H. B. Hemmeter, Th. Moellering, Hy. Heise.

Springfield: Revs. J. Kleinhaus, G. Schuessler, O. H. Horn, E. Berthold, J. Bertram. — Revs. W. J. Kowert, H. Harms, P. Clausen, F. Wenger. F. Tresselt.

River Forest: Revs. J. F. Boerger, A. Pfotenbauer, O. C. H. Boecler; Teachers C. Rupprecht, J. Theiss. — Teacher A. A. Grossmann; Rev. G. W. F. Doege; Teacher R. Schoknecht; Revs. Geo. J. Meyer, P. Sauer.

Seward: Revs. H. Erck, M. J. Von der Au, P. Matuschka; Teachers H. Hillmann, J. H. Brase. — Revs. A. Dick, L. Acker; Teacher W. H. Steinkamp; Rev. A. Schormann; Teacher J. G. Sebald.

Fort Wayne: Revs. A. F. Bernthal, P. Eickstaedt, Th. Schurdel, E. H. Eggers, J. M. Gugel. — Revs. Th. Horst, W. A. Brauer, Ph. Bohn, C. Rodenbeck, O. Praetorius.

Milwaukee: Revs. F. Hertwig, L. Nuechterlein, E. Jehn, F. Selle, E. Sylvester. — Revs. O. Grother, Geo. Schroedel, C. P. Schulz, P. Schedler, R. Schroth.

St. Paul: Revs. H. Bouman, P. Brammer, Jul. Cloeter, J. C. Meyer, F. Randt. — Revs. C. F. Walther, A. Bartz, H. Strasen, M. Weinhold, F. Oberheu.

Concordia: Revs. C. Bernthal, Karl Niermann, J. F. Schmidt, Louis Schwartz, H. Schabacker. — Revs. F. Niedner, G. Wolter, C. W. Harre, W. F. V. Baeder.

Bronxville: Revs. O. Sieker, M. Walker, Chr. Kuehn, F. Verwiebe, Th. Steege. — Revs. O. Graesser, Sr., J. N. H. Jahn, Ph. D., F. Schroeder, H. Wehmeyer, P. Loebner.

Winfield: Revs. C. Hafner, J. W. Behnken, H. Kroening, E. Oelschlaeger, P. D. Mueller. — Revs. P. Kretzschmar, Hy. Mueller, W. Mahler, H. Studtmann, K. Karstensen.

Conover: Revs. E. J. Friedrich, H. Schroeder, J. F. Wenchel, L. Buchheimer, Jr. — Revs. O. A. Sauer, R. T. Ressmeyer, Chas. Schmidling, J. L. Summers.

Oakland: Revs. A. Brohm, G. Jacobsen; Messrs. P. Ehlen, P. M. Liebe. — Revs. C. Fickenscher, W. Huesemann, R. W. Schmooch.

Portland: Revs. C. J. Beyerlein, F. Dobberfuhr, O. Fedder; Teacher P. Hillmann; Rev. P. Hilgendorf. — Revs. J. A. Rimbach, F. Westerkamp, E. J. Probst, F. Zehe, P. Schaus.

Edmonton: Revs. J. E. Herzer, C. T. Wetzstein, P. Wiegner, W. A. Baepier, H. J. Boettcher. — Revs. C. C. Janzow, R. F. Holtzen, W. A. Reitz, C. Thies, H. Kuring.

D. MISSION BOARDS.

Home Missions in North America: Revs. C. F. Dietz, H. G. Schmidt, F. Selle; Messrs. F. Ruenzel, E. Kuechle — all of Milwaukee.

Board of South American Missions: Revs. A. Burgdorf, E. J. Jehn, L. Schmidtko; Messrs. F. Buszin, H. F. Rohman — all of Chicago.

Board of European Missions: Revs. W. Koepchen, Aug. Koerber, G. Koenig; Dr. F. C. Heckel; Mr. H. Schroeder — all of Greater New York.

Board of Foreign Missions: Professors W. Arndt, M. S. Sommer; Revs. H. Hohenstein, A. M. Kuehnert; Messrs. W. Lehr, G. Schmidt — all of St. Louis. Members at large: Prof. G. Chr. Barth; Revs. F. Boerger, K. Kretzschmar, H. M. Zorn; Prof. F. Zucker, D. D.

Board of Deaf-mute Missions: Revs. E. T. Heyne, J. Huchthausen, A. H. Kuntz; Messrs. W. E. Ellinger, J. P. Miller — all of the Twin Cities, Minn.

Board of Foreign-tongue Missions: Revs. G. Gotsch, F. Markworth, L. Wambsgans; Messrs. C. G. Dammeyer, H. C. Vehling — all of Indianapolis.

Board of Jewish Mission: Revs. S. Fréy, H. C. Steup, A. Wismar; Messrs. J. J. Herbert, W. Selle, W. F. Weber — all of New York.

Board of Indian Mission: Revs. G. Fierke, W. Jaeger, O. Neumann; Messrs. W. Boeversdorf, P. Kusserow — all of Wittenberg, Wis.

Board of Immigrant and Seamen's Missions: Rev. J. N. H. Jahn, Ph. D.; Messrs. W. Burgdorf, Th. Lamprecht.

E. VARIOUS BOARDS

Concordia Publishing House: Messrs. Geo. D. Carl, E. Harms, W. Jung-hans, Rob. Leonhardt (newly elected).

Board of Church Extension: Revs. W. Hallerberg, F. W. Weidmann; Teachers R. A. Mangelsdorf, H. Papke; Messrs. C. Burde, B. A. Schiefer-decker — all of St. Louis.

General School Board: Revs. Th. Schurdgel, W. Docter; Teachers P. Schefft, G. Zehnder, L. Wagner; Messrs. F. Hagedorn, C. Zorn, Jr., H. Vogel — all of Cleveland.

General Sunday-school Board: Rev. P. Koenig, Dr. P. E. Kretzmann, Superintendent Th. Kuehnert — all of St. Louis.

General Relief Board: Rev. Aug. Lange, of St. Louis; Prof. F. Zucker, D. D.; Mr. H. C. Paul — of Fort Wayne.

Board for Young People's Work: Revs. R. Jesse, Aug. Merz; Prof. Th. Graebner; Teacher L. H. Becker; Mr. Th. Lange — all of St. Louis and vicinity.

Board of Support: Rev. F. G. Kuehnert; Teacher O. Kolb, Sr.; Messrs. C. H. Dehning, Th. Doering, W. Schulze — all of Northern Illinois.

General Literary Board: Rev. L. Buchheimer; Prof. M. S. Sommer; Teacher H. F. Bade — all of St. Louis.

Juvenile Literature Board: Revs. R. Jesse, A. G. Merz; Prof. Th. Graebner; Teacher L. H. Becker.

American Lutheran Board for Relief in Europe: Revs. A. Beyer, J. C. Borth, J. N. H. Jahn, Ph. D., O. H. Restin; Messrs. H. Brummer, W. Burgdorf, Th. Lamprecht, J. C. Stemmermann — all of New York.

Board of Auditors: Messrs. W. Schlake, F. H. Wolf, A. Abel — all of Chicago.

Electoral Board for Nomination Committee 1926: Revs. L. J. Schwartz, A. Dick, C. W. Harre; Teacher W. Steinkamp; Messrs. H. H. Baden, H. Oel-schlager, J. H. Beckmann.

Intersynodical Committee: Prof. Th. Graebner, Rev. J. Kleinhans, Prof. G. Mezger, D. D.

II. Officers of Synod Not Reelected Every Three Years.

BOARDS OF EXAMINERS (COLLOCUTORS).

For Concordia Seminary, St. Louis, Mo. (and for foreign applicants who have had a theoretical training in theology): The president of the Western District and the president of the institution.

For Concordia Seminary, Springfield, Ill. (and for applicants who have had a practical training in theology): The president of the Central Illinois District and the president of the institution.

For Concordia Teachers' College, River Forest, Ill. (and for applicants who have graduated from other normal schools): The president of the Northern Illinois District and the faculty of the institution.

For Concordia Teachers' College, Seward, Nebr. (and for applicants who have graduated from other normal schools): The president of the Southern Nebraska District and the faculty of the institution.

For Applicants for Teaching and Preaching in South America: The president of the Brazil District and the president of the institution in Porto Alegre.

FACULTIES.

1. *Concordia Seminary, St. Louis, Mo.* Faculty: F. Pieper, D. D., President; L. Fuerbringer; F. Bente; G. Mezger, D. D.; W. H. T. Dau; E. A. W. Krauss, D. D.; Th. Graebner; J. T. Mueller; J. H. C. Fritz, Dean; M. S. Sommer; W. Arndt; W. A. Maier.

2. *Concordia Seminary, Springfield, Ill.* Faculty: H. A. Klein, President; L. Wessel; F. Streckfuss; Th. Engelder; R. Neitzel; C. Hoffmann. Assistant: F. Neebe.

3. *Concordia Teachers' College, River Forest, Ill.* Faculty: W. C. Kohn, President; A. Kaepfel; Alb. Miller; H. H. Schmitt; E. Koehler; G. Eifrig; M. Lochner; E. H. Engelbrecht; O. F. Rusch; H. C. Gaertner; A. Schmieding. Assistants: A. Beck, R. Rohlfing, F. Rathert, E. Bunjes.

4. *Concordia Teachers' Seminary, Seward, Nebr.* Faculty: —, President; F. Strieter; C. Haase; A. Schuelke; H. B. Fehner; J. T. Link; P. Reuter; H. L. Hardt; G. Weller. Assistants: W. Hellwege, J. A. Hilgen-dorf, Miss M. Link.

5. *Concordia College, Fort Wayne, Ind.* Faculty: M. Luecke, President; W. H. Kruse; G. V. Schick, Ph. D.; W. C. Burhop; J. G. Kunst-mann; E. Schnedler; P. Bente; M. Bertram, M. A.; W. A. Hansen; G. Schmidt, M. A.; M. Stoeppelwerth, M. A. Assistants: W. Herrling, K. Hen-riehs, W. Roehrs. F. Zucker, D. D., Librarian.

6. *Concordia College, Milwaukee, Wis.* Faculty: G. Chr. Barth, Presi-dent; M. J. F. Albrecht, Ph. D.; C. Huth, D. D.; G. W. Mueller; O. Hatt-staedt; C. Ross; A. Bergmann; M. Graebner. Assistants: E. Hattstaedt, G. Hass, D. Kraft.

7. *Concordia College, St. Paul, Minn.* Faculty: Th. Buenger, President; H. W. F. Wollaeger, Ph. D.; W. Moenkemoeller; E. Lussy; Aug. Schlue-ter; O. B. Overn, A. M.; L. Blankenbuehler, A. M.; F. Wahlers; O. B. Har-stad. Assistants: P. Stor, P. Juergensen, E. Widman, O. Frey (music).

8. *St. Paul's College, Concordia, Mo.* Faculty: J. H. C. Kaepfel, Presi-dent; H. A. Schoede; A. Baepler; H. Lobeck; W. Schaller; O. Krueger; F. W. Wismar. Assistant: Th. Schlichten.

9. *Concordia Institute, Bronxville, N. Y.* Faculty: G. A. Romoser, Presi-dent; H. Feth, D. D.; H. Stein, Ph. D.; R. W. Heintze; L. Heinrichsmeyer; Th. Hausmann; H. J. Rippe; E. C. Hassold; C. A. Romoser. Assistants: O. Prokopy, H. C. Engelbrecht, E. Ahrndt.

10. *St. John's College, Winfield, Kans.* Faculty: A. W. Meyer, Presi-dent; H. Stoeppelwerth; C. Scaer, A. M.; L. Steiner, B. S.; W. Wente, A. M.; J. W. Werling; A. E. Kunzmann, B. S. Assistants: R. Brauer, E. Schmidt, E. Loessel, H. Proehl, A. Wilder.

11. *Concordia College, Conover, N. C.* Faculty: O. W. Kreinheder, Presi-dent; C. O. Smith; M. H. Coyner; C. F. Fredericks.

12. *Concordia Seminary, Porto Alegre, Brazil.* Faculty: —, Presi-dent; L. C. Rehfeldt; P. Schelp.

13. *California Concordia College, Oakland, Cal.* Faculty: Th. Brohm, Jr., President; H. Jonas; R. A. Eifert, M. A.; Th. Brohm, Sr. Assistants: O. Theiss, A. Thomas.

14. *Concordia College, Portland, Oreg.* Faculty: F. W. J. Sylwester, President; E. H. Brandt. Assistant: A. Fuerbringer.

15. *Concordia College, Edmonton, Alta., Can.* Faculty: A. H. Schwer-mann, President; A. Rehwinkel. Assistant: J. H. Herreilers.

Index.

PAGE	PAGE
Advisory Members, Rights of .. 44	Higher Education 11
American Lutheran Board for Relief in Europe 42	Incorporation of Synod in Other States 86
Appeals 82	Incorporation of Synod in Can- ada 44
Appeals, Nomination Committee 7	Incorporation of Synodical Con- ference 46
Assistant Secretary 6	Institutions, Reduction of Num- ber of 12
Attendance, Table of 8	Institutions: —
Auditing Committee 77	Bronxville 27
Blind, Literature for 39	Concordia 26
Boards of Control 90	Conover 28
Boards of Control, Regulations for 13	Edmonton 29
Board of Directors, Report of.. 85	Fort Wayne 24
Building Program, Financing of 80	Milwaukee 25
Charter Amended 86	Oakland 29
Church Architecture, Committee on 87	Portland 29
Church Extension Fund 32	Porto Alegre 30
Committees 7	Winfield 28
Comptroller 77. 79	River Forest 23
Concordia Publishing House ... 53	Seward 23
Constitution, Additions to 42	Springfield 22
Constitution, Translation of ... 43	St. Louis 13
Constitutional Committee 43	St. Paul 26
Districts, Division of 45	Texas (New) 30
Doctrinal Essays 87	General Resolutions 11
Educational Conference 11	Intersynodical Conferences 83
Education, Board of 11	Juvenile Literature 52
Elections, Nomination Commit- tee for 7	Koester, Brauer, Danitschek, In- quiry of 85
Electoral Boards 91	Ladies' Seminary 11
English District, Amalgamation of 45	Legacies 73
English District, Dismissals to 46	Literary Board 53. 92
Examiners, Boards of 92	L. L. L. Fund 57
Excuses 9	L. L. L. Convention 88
Faculties 93	Mission Boards 91
Financial Matters 59	Missions: —
Finnish Church, Negotiations with 84	Deaf-mute 38
Greetings 88	Foreign-tongue 39
Gymnasiums 12	Foreign 36

PAGE	PAGE
Home, in North America 31	School Conference, Meeting of General 50. 88
Home, in Europe 33	School-year, Duration of, at Our Synodical Institutions 12
Home, in South America 35	Senior College 13
Immigrant 41	Services, Divine 87
Indian 40	Sessions 3
Jewish 39	Statistics, Bureau of 86
Seamen's 42	Sterling-Towner Bill 50
New Members 9	Sunday-schools 50
Nominations, Committee on 43	Support of Incapacitated Ser- vants of the Church and Their Dependents 56
Norweg. Synod, Agreement with 83	Supreme Court Decision 50
Offices, Creation of New 44	Survey Committee 11
Periodicals 54	Synod, Next 89
Parochial Schools 46	Synod, Officers of 90
President's Address 3	Teachers' Colleges, Latin at ... 13
President's Report 5	Thanks, Resolutions of 88
President's Residence 31	Tuition-fee Increased 12
Professors' Residences 31	World Congress of Lutherans .. 36
Professors, District Membership of 46	Young People's Work 51
Publications 53	
Relief Board 58	
School Board, Report of 46	