

Southeastern District Statistical Trends

Chart A – Congregations and Total Membership

Southeastern District

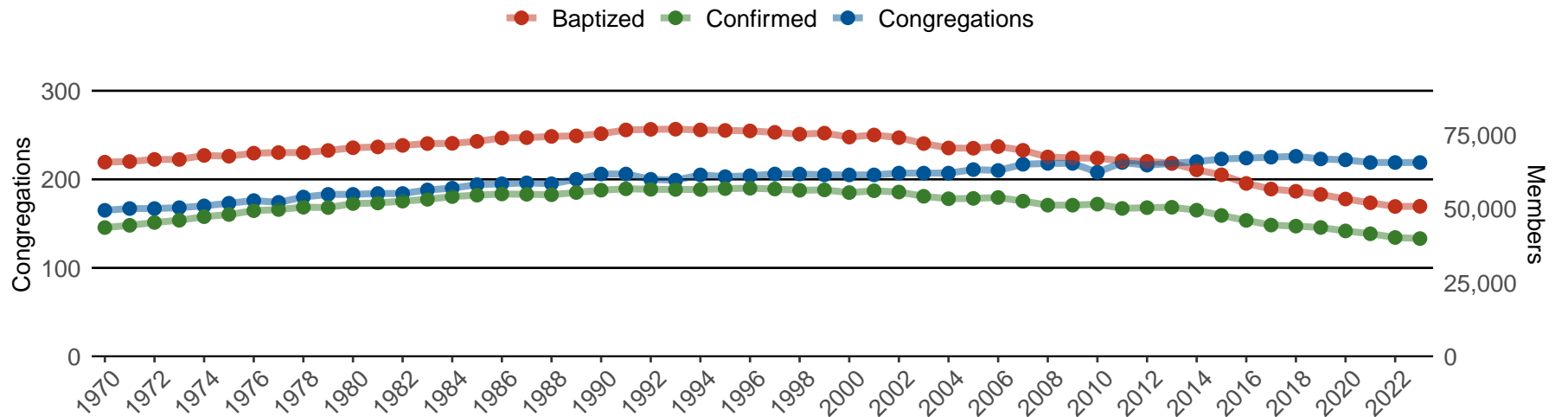
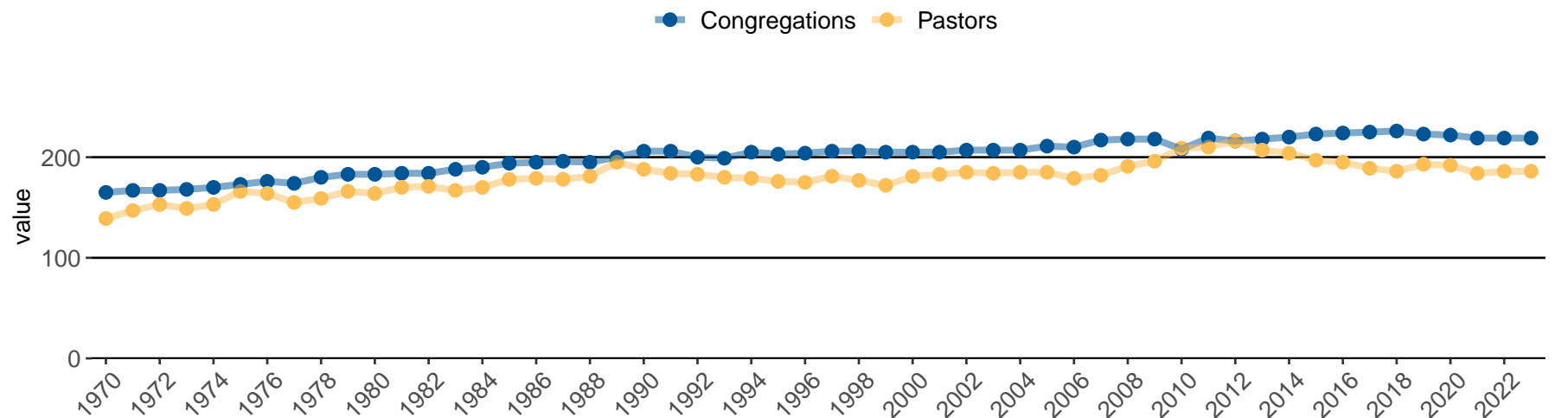


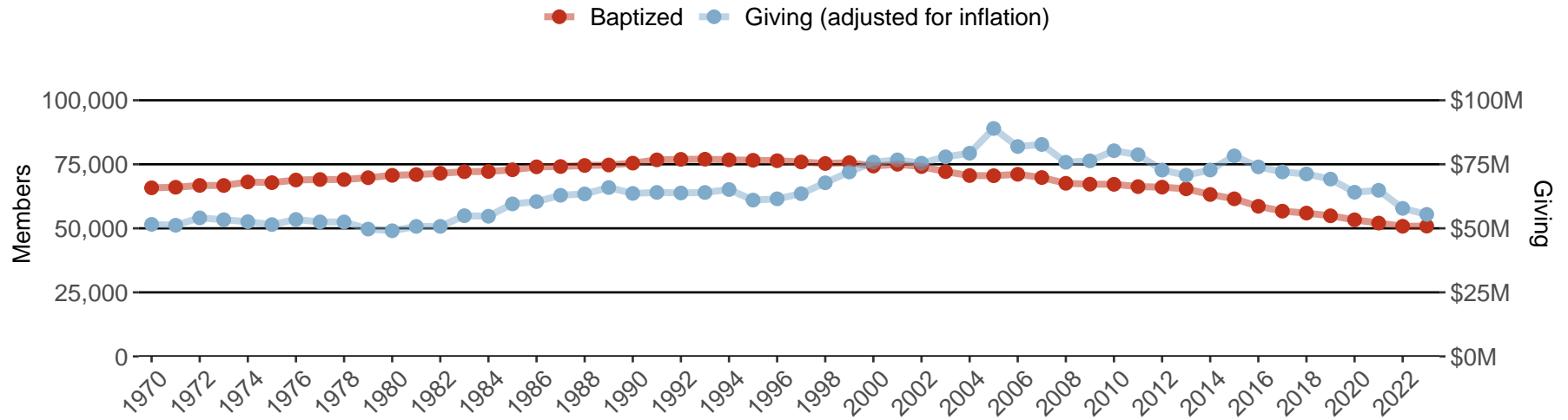
Chart B – Congregations and Number of Parish Pastors

Southeastern District



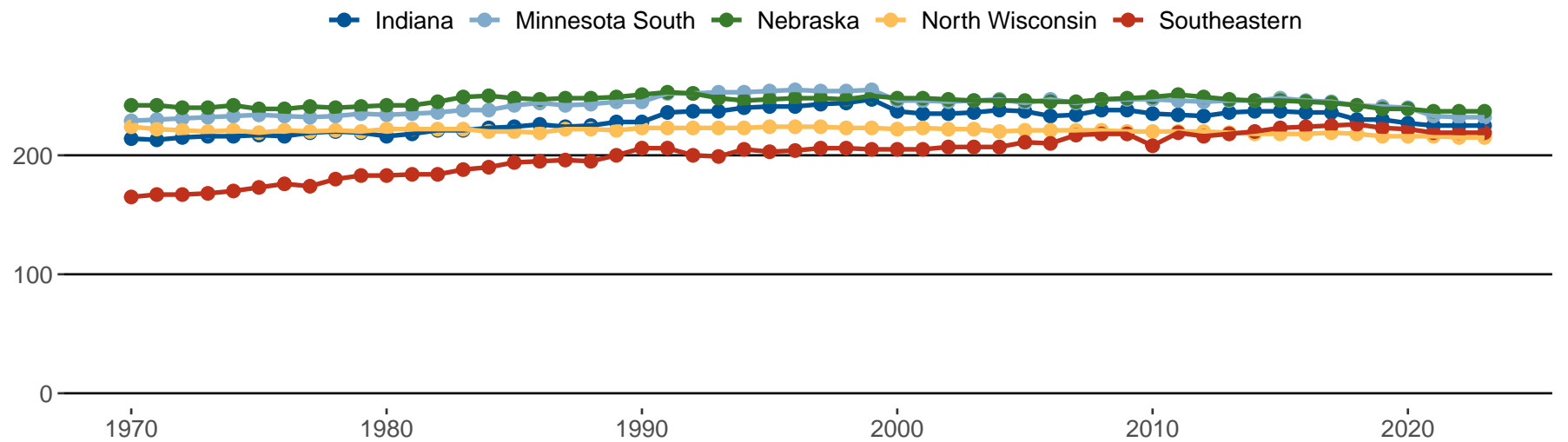
## Chart C – Members and Giving

Southeastern District

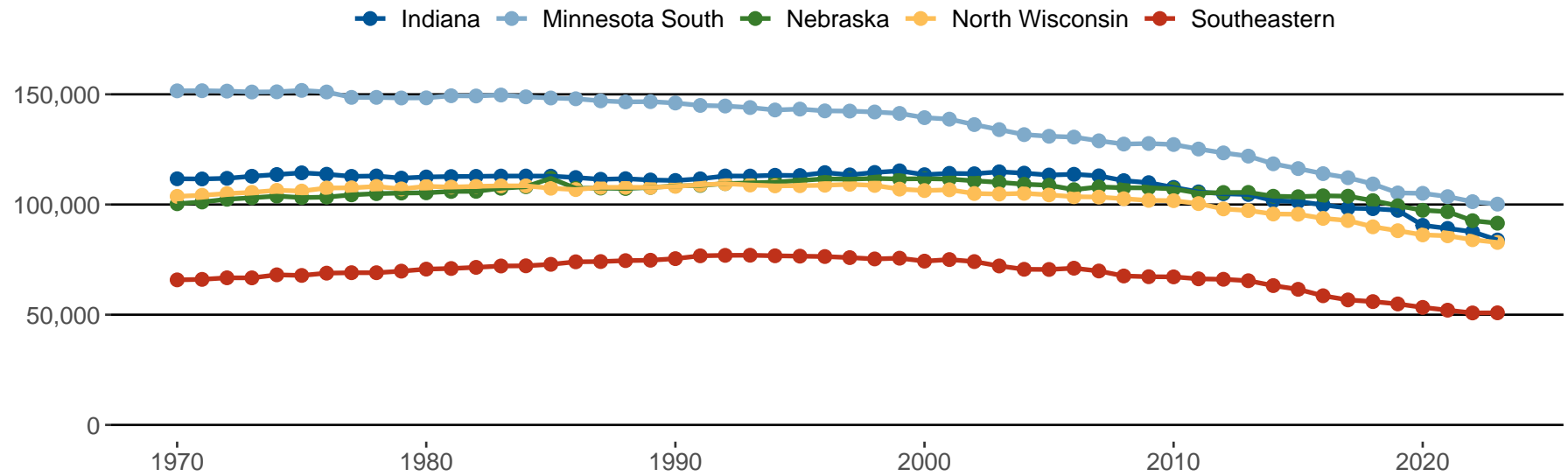


## Comparison with Similar Sized Districts

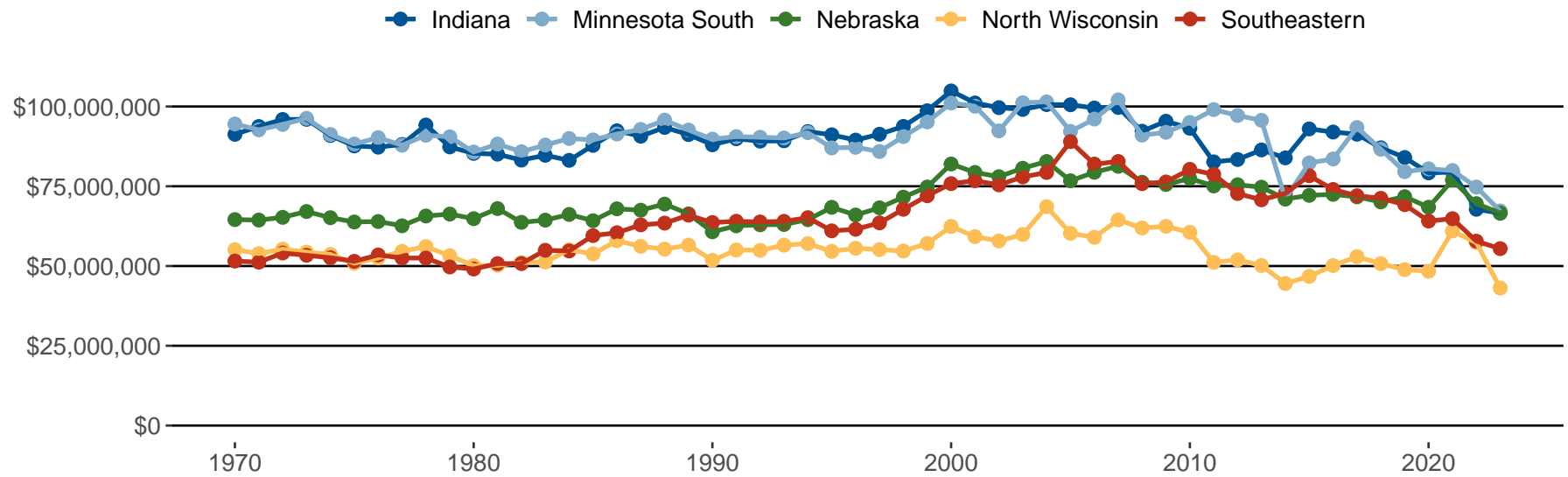
### Chart A – Total Congregations



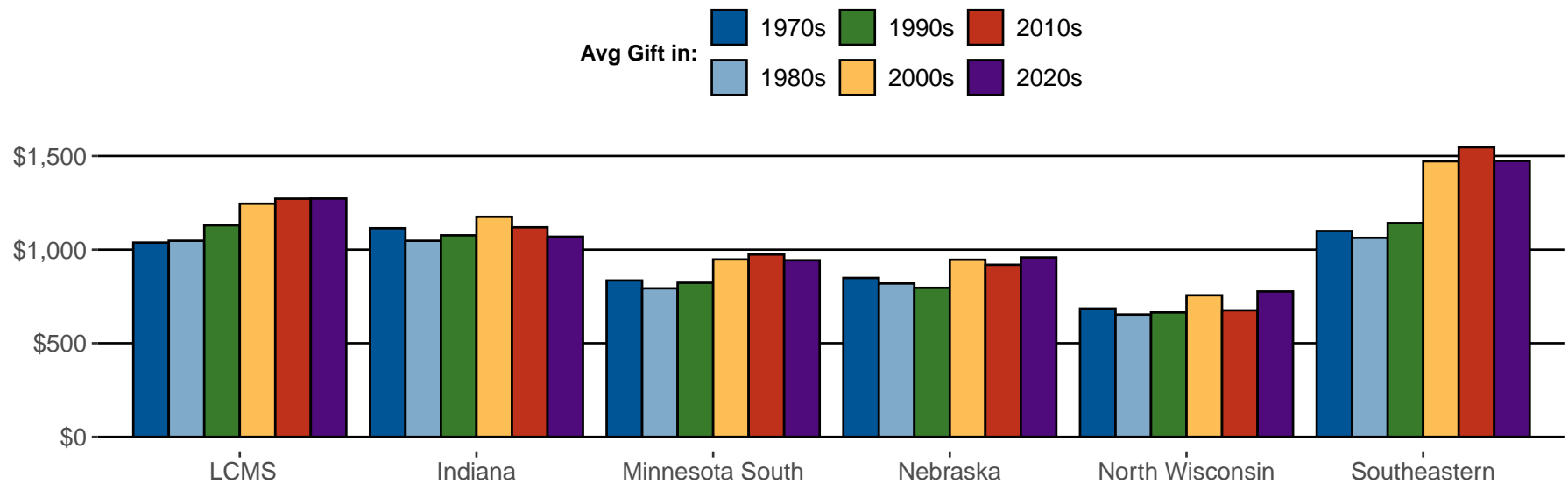
**Chart B – Total Baptized Membership**



**Chart C – Regular Giving (Adjusted for Inflation)**

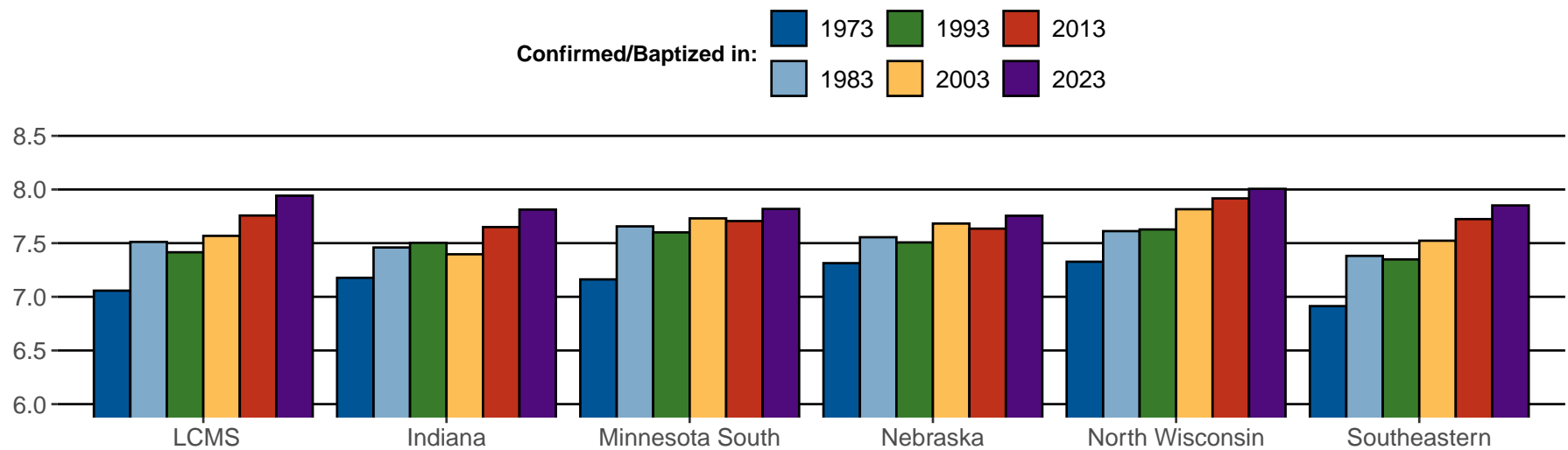


**Chart D – Average Gift (Adjusted for Inflation) Per Confirmed Member**

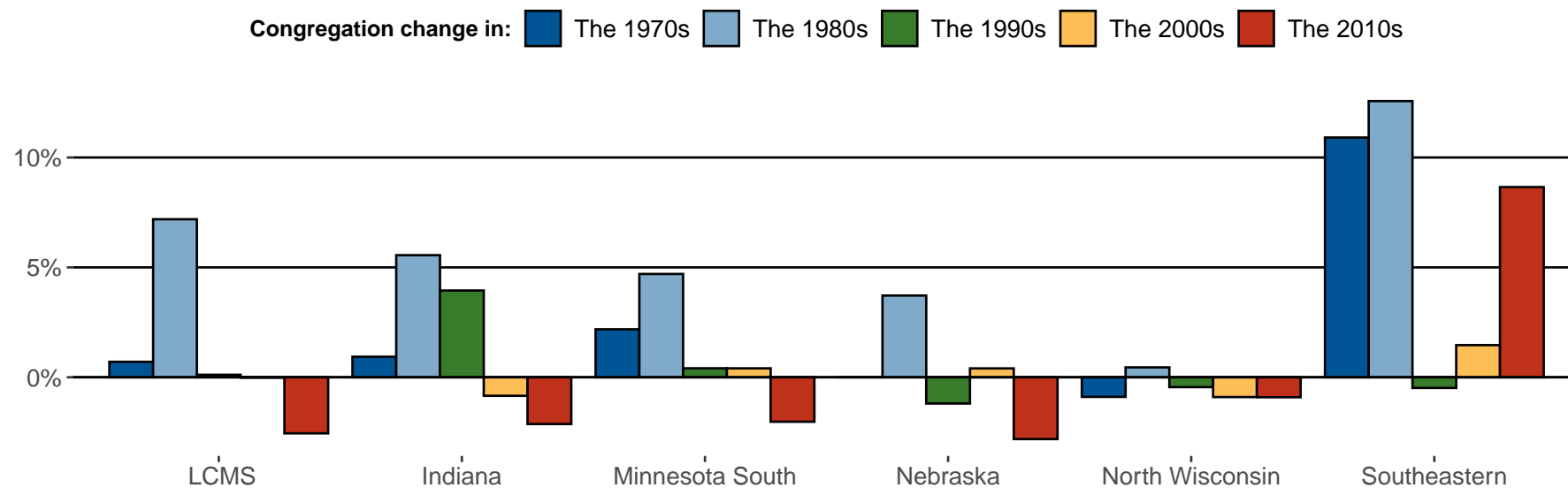


**Chart E – Confirmed Members for Every 10 Baptized Members**

(A higher number typically indicates fewer children)



**Chart F – Ten-Year Rates of Change in Congregations**



**Chart G – Ten-Year Rates of Change in Baptized Members**

