

ow great are your works, O Lord!
Your thoughts are very deep!

(PSALM 92:5)

STRUCTURE

- v. 1-4** It is good to give thanks to the Lord.
- v. 5-9** The wicked pass away like grass.
- v. 10-11** You have exalted me, and I see the destruction of the wicked.
- v. 12-15** The righteous flourish like a great tree.



AT A GLANCE

PART OF A WHOLE

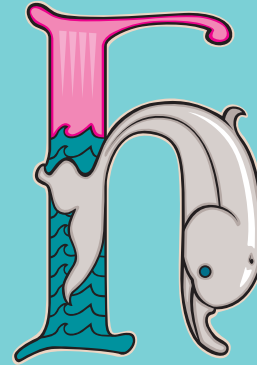
Psalms 90–92 are linked by the common theme of the Lord as the dwelling place of His beloved people (90:1, 91:1, 92:13).

“CEDAR OF LEBANON”

There are few of these mighty trees left today, but in the Scriptures they are proverbial in size and strength.

“MY HORN”

A horn, as the primary defensive or offensive weapon of a number of animals (here the wild ox), is a symbol of strength and power.



ow great are your works, O Lord!
Your thoughts are very deep!

(PSALM 92:5)

STRUCTURE

- v. 1-4** It is good to give thanks to the Lord.
- v. 5-9** The wicked pass away like grass.
- v. 10-11** You have exalted me, and I see the destruction of the wicked.
- v. 12-15** The righteous flourish like a great tree.



AT A GLANCE

PART OF A WHOLE

Psalms 90–92 are linked by the common theme of the Lord as the dwelling place of His beloved people (90:1, 91:1, 92:13).

“CEDAR OF LEBANON”

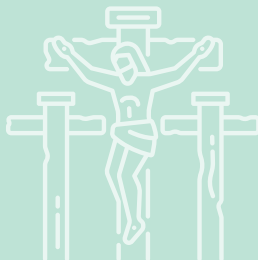
There are few of these mighty trees left today, but in the Scriptures they are proverbial in size and strength.

“MY HORN”

A horn, as the primary defensive or offensive weapon of a number of animals (here the wild ox), is a symbol of strength and power.

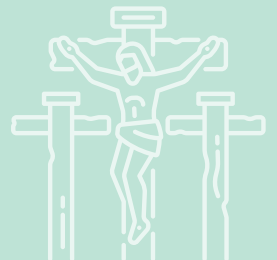
CHRIST IS HERE

The “fool” or the “stupid man” cannot understand the works of God, particularly the cross of Christ, where the wicked are destroyed and the righteous established in that strange and dreadful strife.



CHRIST IS HERE

The “fool” or the “stupid man” cannot understand the works of God, particularly the cross of Christ, where the wicked are destroyed and the righteous established in that strange and dreadful strife.



The opening psalm of the psalter gives us the theology of the “two ways”: the way of the righteous and the way of the wicked. The righteous in particular are described as a mighty tree planted beside life-giving water. Psalm 92 expands on that concept with vivid imagery. The wicked are fleeting like grass, doomed to destruction, but the righteous are planted “in the house of the Lord” (v. 13), like a palm tree or one of the cedars of Lebanon. There is a clear contrast here regarding time and endurance. The wicked quickly perish, but the Lord is “on high forever” (v. 8). Those who belong to Him, the righteous, will similarly endure. In keeping with the botanical imagery of the psalms, they will bear fruit to old age and yet be still full of sap. The psalmist notes that such things cannot be understood by the “fool” or the “stupid man” (v. 6); they must be revealed by God, known by faith. Confidence in the ultimate destruction of the wicked and the endurance of the righteous then leads naturally to praise. It is for that reason that the righteous were planted: “to declare that the Lord is upright” (v. 15).



The opening psalm of the psalter gives us the theology of the “two ways”: the way of the righteous and the way of the wicked. The righteous in particular are described as a mighty tree planted beside life-giving water. Psalm 92 expands on that concept with vivid imagery. The wicked are fleeting like grass, doomed to destruction, but the righteous are planted “in the house of the Lord” (v. 13), like a palm tree or one of the cedars of Lebanon. There is a clear contrast here regarding time and endurance. The wicked quickly perish, but the Lord is “on high forever” (v. 8). Those who belong to Him, the righteous, will similarly endure. In keeping with the botanical imagery of the psalms, they will bear fruit to old age and yet be still full of sap. The psalmist notes that such things cannot be understood by the “fool” or the “stupid man” (v. 6); they must be revealed by God, known by faith. Confidence in the ultimate destruction of the wicked and the endurance of the righteous then leads naturally to praise. It is for that reason that the righteous were planted: “to declare that the Lord is upright” (v. 15).



USE IN THE CHURCH

Antiphon: v. 1a

In the Daily Office: Saturdays at late morning (Lauds)

At the Divine Service:

LSB Introit verses for Evangelists; historically for Nativity of John the Baptist and John the Evangelist

One-Year:

Introit verses for Epiphany 2

Gradual for Trinity 14 (v. 1–2)

Psalm for Trinity 10 (ant: v. 4)

Three-Year:

Introit for Propers 4A and 18A (ant: v. 5), Proper 6B (ant: v. 1)

Psalm for Epiphany 8C (ant: v. 4)

USE IN THE CHURCH

Antiphon: v. 1a

In the Daily Office: Saturdays at late morning (Lauds)

At the Divine Service:

LSB Introit verses for Evangelists; historically for Nativity of John the Baptist and John the Evangelist

One-Year:

Introit verses for Epiphany 2

Gradual for Trinity 14 (v. 1–2)

Psalm for Trinity 10 (ant: v. 4)

Three-Year:

Introit for Propers 4A and 18A (ant: v. 5), Proper 6B (ant: v. 1)

Psalm for Epiphany 8C (ant: v. 4)

PSALM PRAYER

PSALM

92

O God, You have made Your saints glad by Your work. You strengthen Your people with many gifts and they flourish like palm trees planted in Your courts. Put away the weight of our sins and bring us at last with Your saints to glory everlasting; through Jesus Christ our Lord. **Amen.**

PSALM PRAYER

PSALM

92

O God, You have made Your saints glad by Your work. You strengthen Your people with many gifts and they flourish like palm trees planted in Your courts. Put away the weight of our sins and bring us at last with Your saints to glory everlasting; through Jesus Christ our Lord. **Amen.**