

Iowa East District

Chart A - Congregations and Total Membership

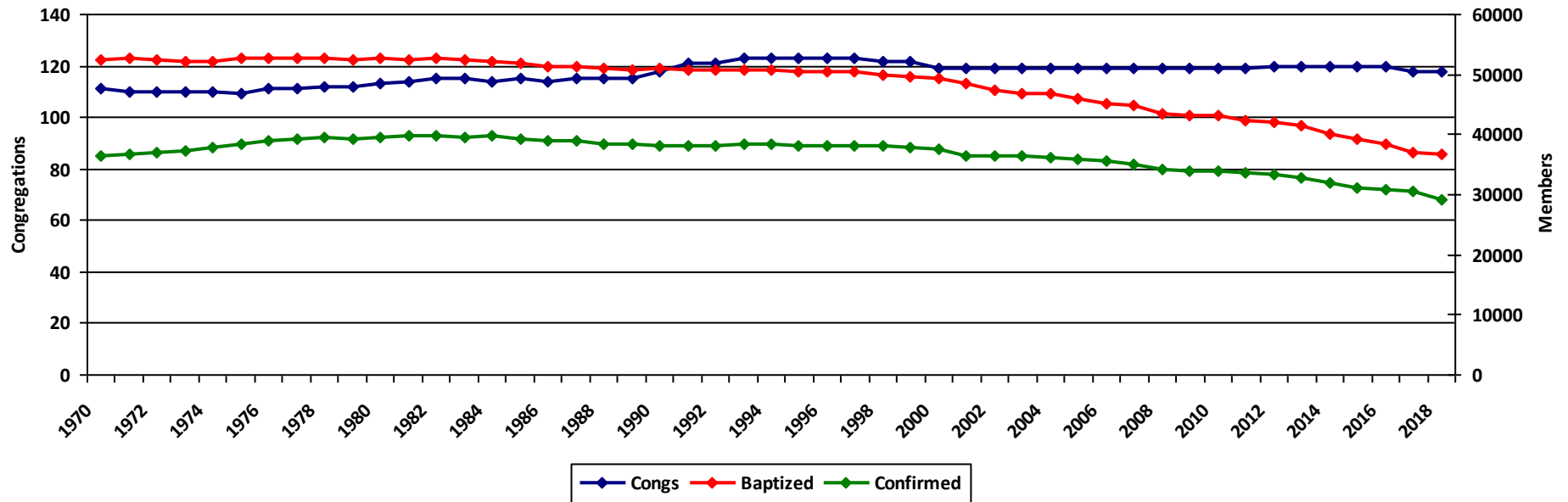
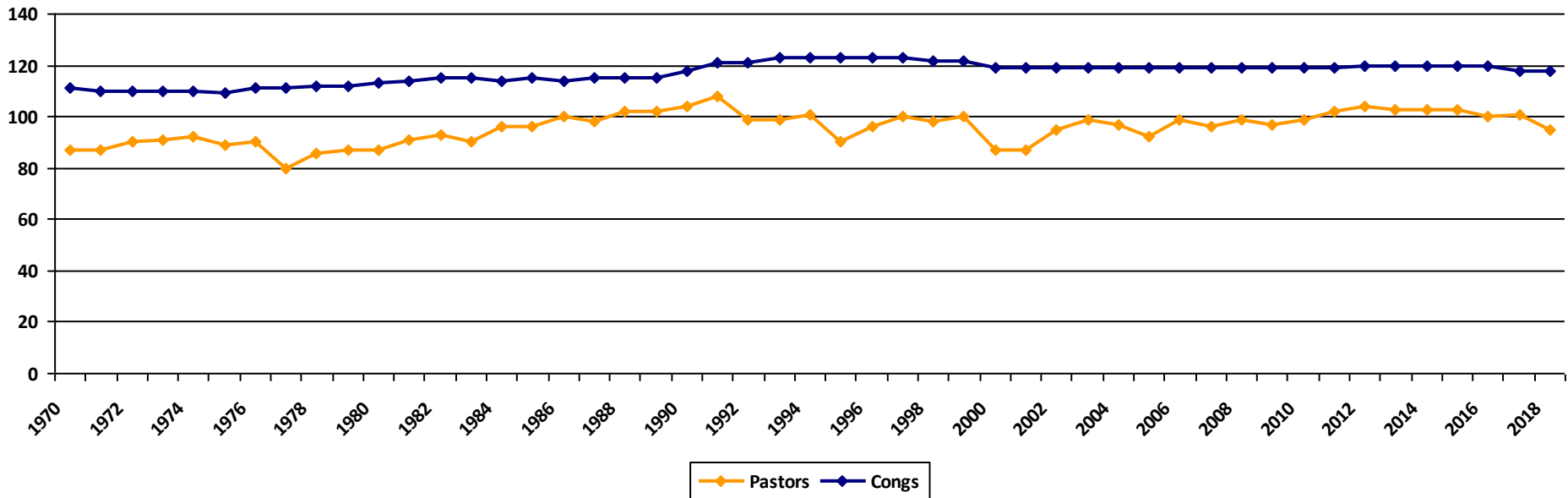
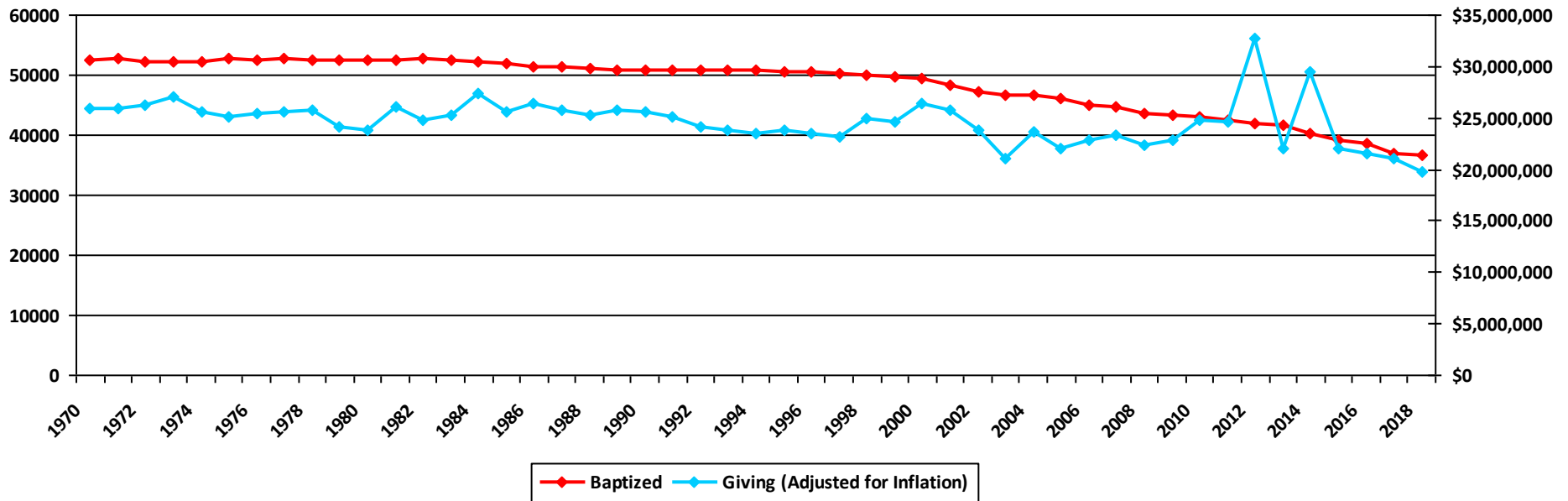


Chart B - Congregations and Number of Parish Pastors



Iowa East District

Chart C - Membership and Giving (adjusted for inflation)



Analysis of the Iowa East District Charts

* Chart A - From the '70s through the '90s, the Iowa East District maintained its membership numbers, however, since around 2000 there has been a noticeable decline in membership.

* Chart B - In the past 15 years, Iowa East has maintained a consistent number of congregations, and has gradually increased the number of pastors serving them.

* Chart C - In recent years, giving in Iowa East has remained fairly consistently linked with membership numbers. The spikes in 2012 and 2014 seem to be due to unusually high giving in one specific congregation (possibly erroneous data).